

*2007-2008
District of Arizona
Annual Report of Statistics*



*Published by
Office of the Clerk of Court
For the District of Arizona*

February 4, 2009

The 2008 District of Arizona Annual Statistics Report is published by the Clerk of Court and represents data from the most recent fiscal year (October 1, 2007 to September 30, 2008) and, when available, historical data for comparison. The findings highlight caseload indicators in both criminal and civil areas, workload statistics, and other statistical information from the district's Probation and Jury Services Offices.

Some general findings gleaned from the data in this report include:

- ◆ The District of Arizona has seen a decrease in criminal defendant filings and terminations this year as compared to last year (28.5% and 16.5% respectively). The decrease is more pronounced in the Tucson division. It is important to point out the district is always dependent on the U.S. Attorney's Office deciding which cases to pursue and the focus this fiscal year has been on petty offense violations. It is anticipated that in the next fiscal year that focus will again turn toward criminal felony offenses.
- ◆ Despite the overall decrease in criminal felony filings, Phoenix has seen felony immigration filings increase by almost twenty percent from FY 2007 (18.9% increase). Felony fraud cases have increased in both divisions in 2008.
- ◆ The District of Arizona has seen a marked increase in Petty Offense dispositions from prior years. The district experienced a 72.6% increase in these types of dispositions with the Tucson division experiencing a 150% increase in petty offense dispositions over 2007 figures.
- ◆ The District of Arizona civil filings have remained relatively stable this year in comparison to the last two fiscal years. There has been a slight 1.4% increase from FY 2007. The district's civil terminations have decreased from FY 2007 by 6.6 percent.
- ◆ Even though the district has had a slight increase in civil filings, there has been a 13.5% decrease in the number of prisoner petitions filed in FY 2008 in Phoenix; Tucson has had a 4.2% increase in those types of cases. Also in respect to the types of cases filed in the district, there has been a significant increase in the number of real property civil cases filed in the district with a 616% increase over FY 2007.
- ◆ Criminal duties account for at least 90% of the workload of magistrate judges under § 636(b).

In addition to the information briefly mentioned above, statistical charts can be found within this report and offer much more data related to the District of Arizona for the FY 2008.

Statistical reports include:

Divisional Summary Statistics

- Civil Case Filings Page 4
- Civil Case Filings – Weighted Page 5
- Civil Case Filings – Major Case Type – Phoenix / Tucson Page 6
- Civil Case Terminations Page 10
- Civil Case Terminations – Weighted Page 11
- Civil Case Terminations – Major Case Type – Phoenix / Tucson . Page 12
- Criminal Case Filings Page 16
- Criminal Case Terminations Page 17
- Criminal Defendant Filings Page 18
- Criminal Defendant Filings – Weighted Page 19
- Criminal Defendant Filings – Major Type of Offense Page 20
- Criminal Defendant Terminations Page 24
- Criminal Defendant Terminations – Weighted Page 25
- Criminal Defendant Terminations – Major Type of Offense Page 26

Workload Statistics

- District Judge Time in Court (Yearly Total for All Judges) Page 30
- District Judge Time in Court (Average Hours Per Judge) Page 30
- Magistrate Judge Time in Court (Criminal Hours – All Judges) .. Page 31
- Magistrate Judge Time in Court (Civil Hours – All Judges) Page 31
- Magistrate Judge Time in Court (Criminal Hrs – Avg Per Judge) . Page 32
- Magistrate Judge Time in Court (Civil Hours – Avg Per Judge) Page 32
- District Judge Civil Trial Information – Phoenix/Tucson Page 33
- District Judge Criminal Trial Information – Phoenix/Tucson Page 35
- District Judge Civil Trial Length – Phoenix/Tucson Page 37
- District Judge Criminal Trial Length – Phoenix/Tucson Page 39
- Petty Dispositions (includes CVB Dispositions) Page 41
- Misdemeanor Dispositions Page 41
- Magistrate Judge Workload - Duties Under § 636(b) FY 2008 Page 42
- Magistrate Judge Workload - Preliminary Proceedings FY 2008 . Page 43
- Magistrate Judge Workload - Consent Case Activity Page 44

Jury Services Statistics

- District Jurors Summoned Page 45
- District Jury Utilization Submitted to the AO FY 2008 Page 46
- District Jury Utilization Adjusted for DAZ FY 2008 Page 47

Probation Statistics

- Presentence Report Completions Page 49
- Presentence Report Completions – Tucson Page 50

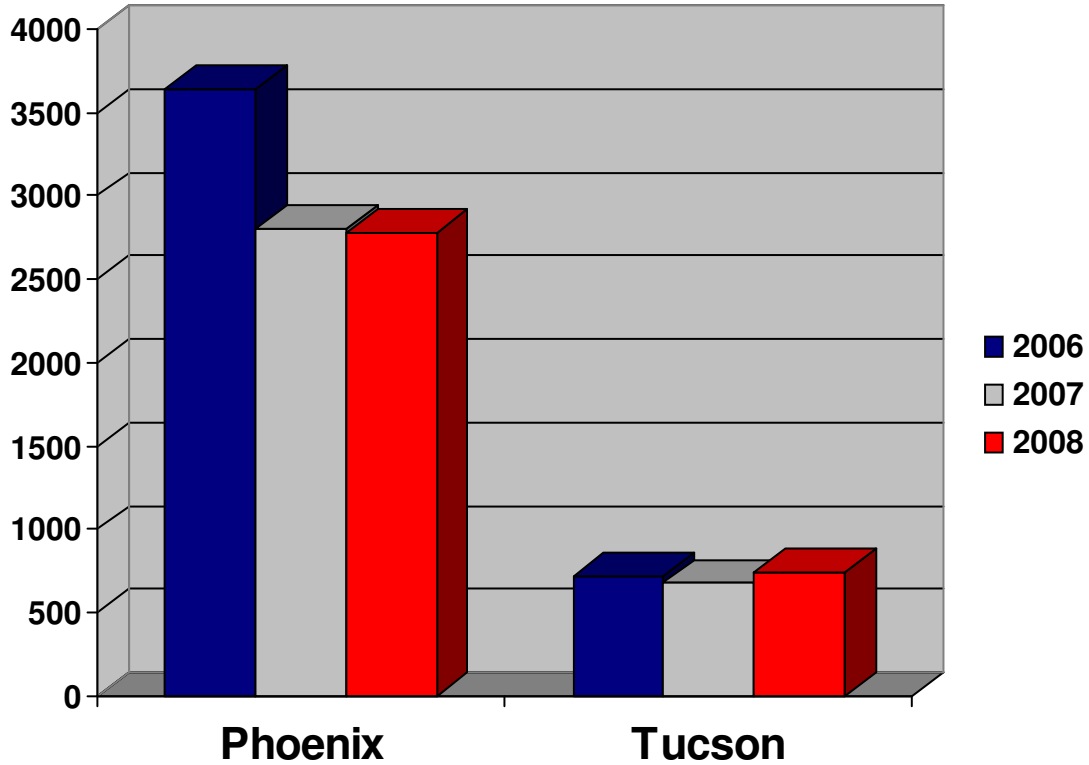
- Presentence Report Completions – Phoenix Page 51
- P.O. Requested Continuances – FY 08 Page 52
- Supervision Workload for Fiscal Year 08 – Activated Cases Page 53
- Supervision Workload for Fiscal Year 08 – Closed Cases Page 54
- District’s Supervision Caseload 2008 Page 55
- Average Caseload per Office for Fiscal Year 2008 Page 56

Appendices

- A – Nature of Suit Codes Used in Civil Litigation Page 57
- B – Offense Types Used in Criminal Categories Page 58

Divisional Caseload Statistics

Civil Filed Cases

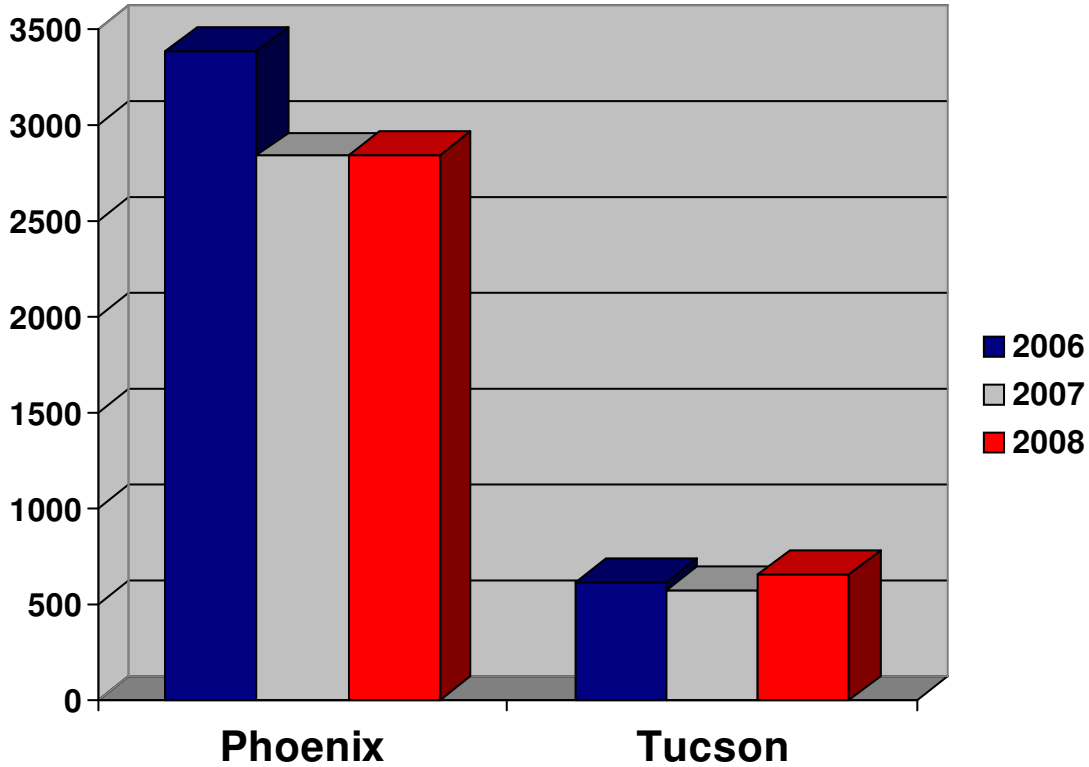


	2006	2007	2008	% Increase '07 to '08
Phoenix	3,613	2,787	2,767	-0.7%
Tucson	718	674	743	10.2%
Civil Total	4,331	3,461	3,510	1.4%

NOTE: Each filing in a civil case pertains to the complaint or petition that has been submitted to the Court for action. Filings for civil cases count as one filing regardless of the number of parties associated with the case. Civil filings in this report consist of civil and sealed civil cases. Data here are comparable to Table C-1 Civil Cases information published by the AO.

Divisional Caseload Statistics

Civil Filed Weighted Cases*

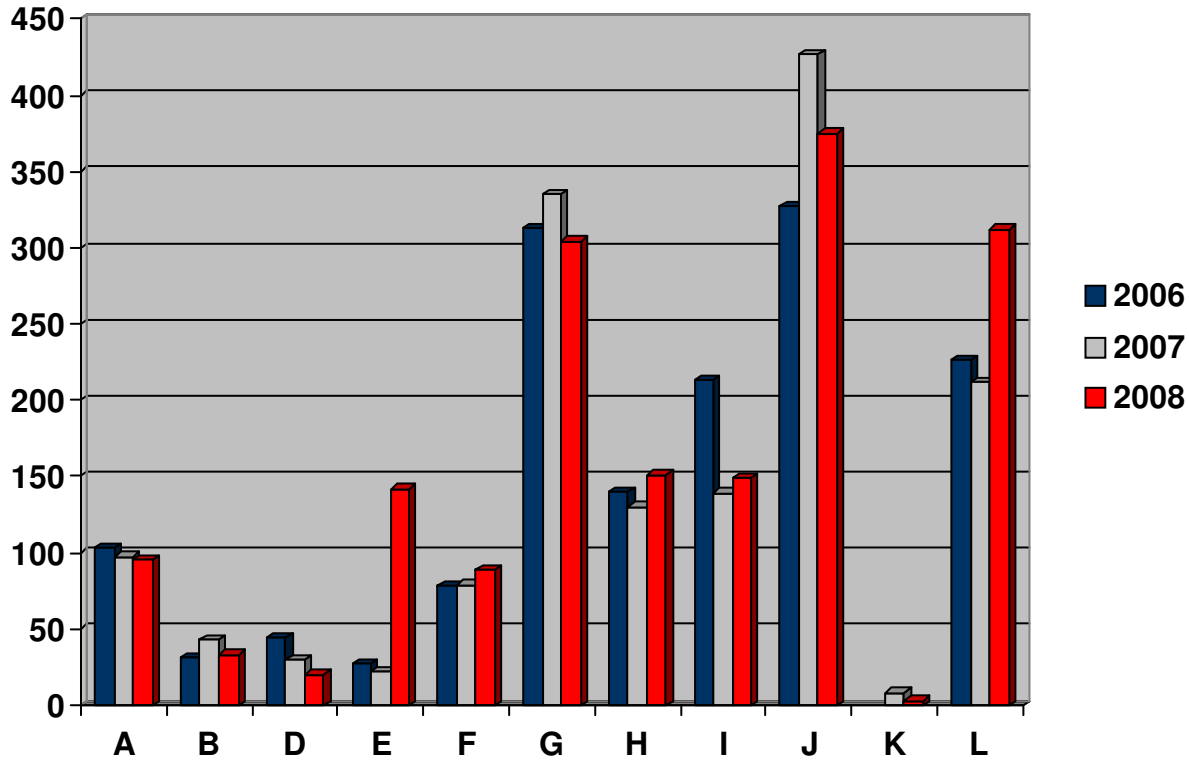


	2006	2007	2008	% Increase '07 to '08
Phoenix	3,384	2,837	2,845	0.3%
Tucson	618	573	656	14.6%
Civil Total	4,002	3,410	3,501	2.7%

NOTE: Weighted case filings differ from case filings in general as they only include original proceedings, removals from state court, and transfers from other districts. All other case filing types (remands, reopens, etc) are excluded.

Divisional Caseload Statistics

Civil Filed Cases by Major Case Type - Phoenix

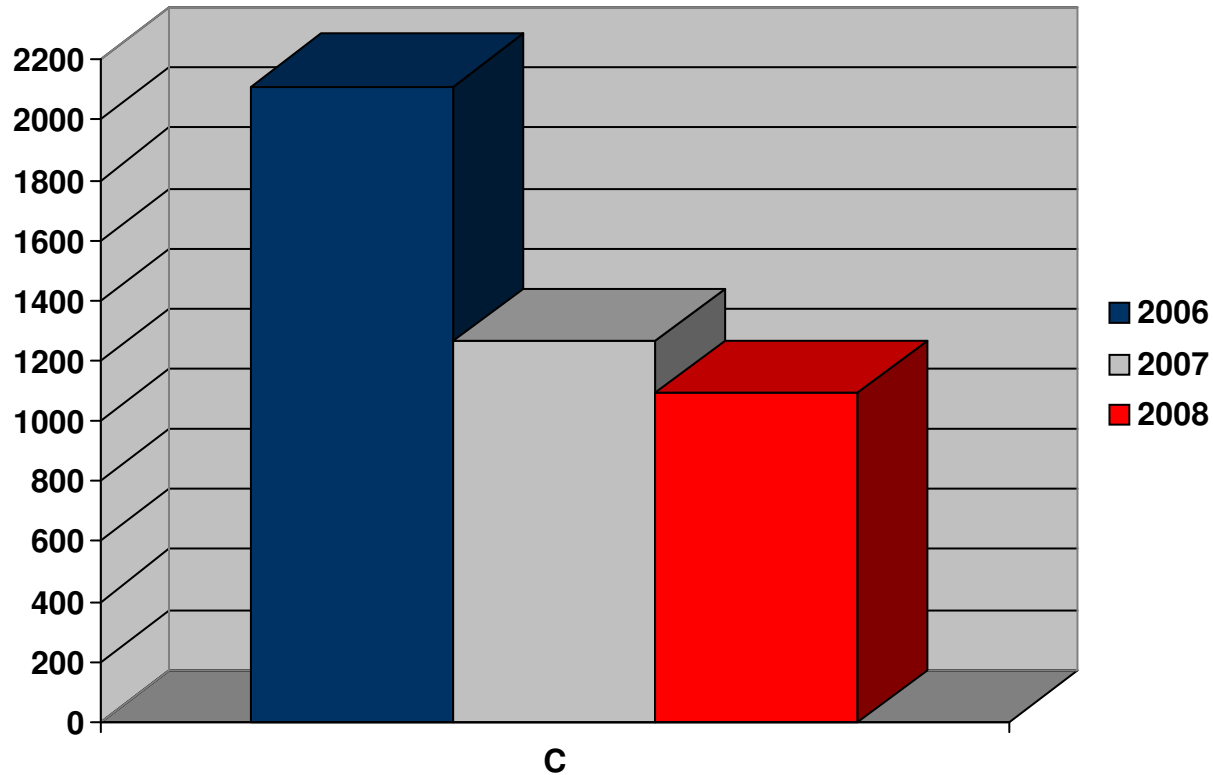


	2006	2007	2008	% Increase '07 to '08
A - Social Security	103	97	95	-2.1%
B - Personal Injury/Product Liability	31	43	33	-23.3%
C - Prisoner Petitions	2,111	1,265	1,094	-13.5%
D - Forfeitures/Penalties and Tax Suits	44	30	20	-33.3%
E - Real Property	27	22	142	545.5%
F - Labor Suits	78	79	89	12.7%
G - Contracts	313	335	304	-9.3%
H - Torts (NOT Pers Inj/Prod Liab)	140	130	151	16.2%
I - Copyright, Patent, and Trademark	213	139	149	7.2%
J - Civil Rights	327	427	375	-12.2%
K - Antitrust		8	3	-62.5%
L - All Other Civil	226	212	312	47.2%

NOTE: A complete list of Nature of Suits used in each category can be found in Appendix A. Chart above does not include all types of cases - the remaining type(s) are found on the next page. Data here are comparable to Table C-2 Civil Cases information published by the AO.

Divisional Caseload Statistics

Civil Filed Cases by Major Case Type - Phoenix

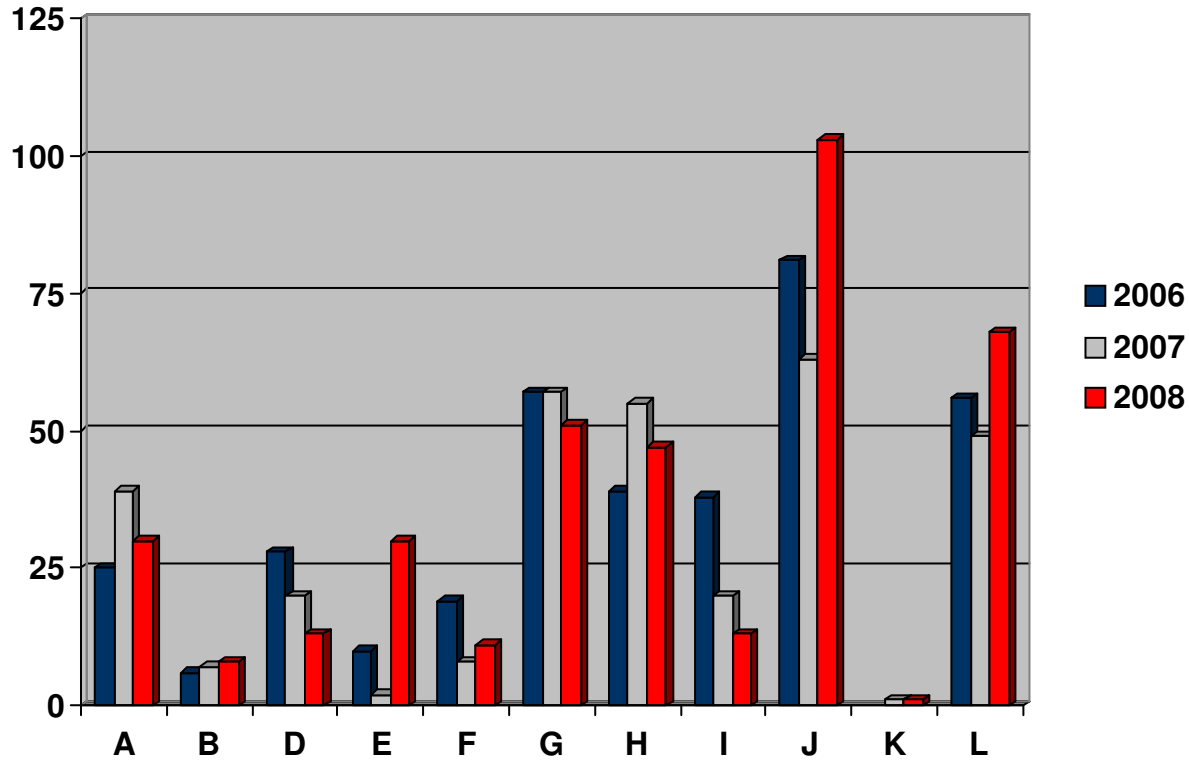


	2006	2007	2008	% Increase '07 to '08
A - Social Security	103	97	95	-2.1%
B - Personal Injury/Product Liability	31	43	33	-23.3%
C - Prisoner Petitions	2,111	1,265	1,094	-13.5%
D - Forfeitures/Penalties and Tax Suits	44	30	20	-33.3%
E - Real Property	27	22	142	545.5%
F - Labor Suits	78	79	89	12.7%
G - Contracts	313	335	304	-9.3%
H - Torts (NOT Pers Inj/Prod Liab)	140	130	151	16.2%
I - Copyright, Patent, and Trademark	213	139	149	7.2%
J - Civil Rights	327	427	375	-12.2%
K - Antitrust		8	3	-62.5%
L - All Other Civil	226	212	312	47.2%

NOTE: A complete list of Nature of Suits used in each category can be found in Appendix A. Chart above does not include all types of cases - the remaining type(s) are found on the previous page. Data here are comparable to Table C-2 Civil Cases information published by the AO.

Divisional Caseload Statistics

Civil Filed Cases by Major Case Type - Tucson

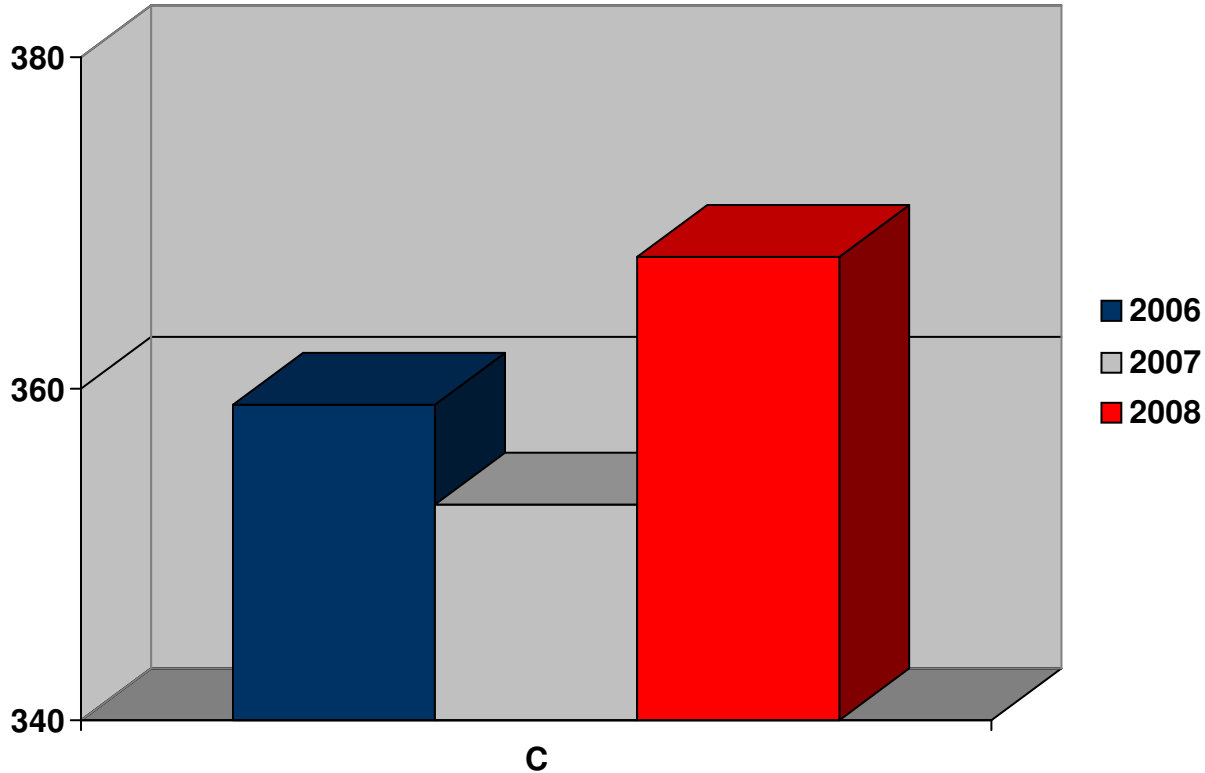


	2006	2007	2008	% Increase '07 to '08
A - Social Security	25	39	30	-23.1%
B - Personal Injury/Product Liability	6	7	8	14.3%
C - Prisoner Petitions	359	353	368	4.2%
D - Forfeitures/Penalties and Tax Suits	28	20	13	-35.0%
E - Real Property	10	2	30	1400.0%
F - Labor Suits	19	8	11	37.5%
G - Contracts	57	57	51	-10.5%
H - Torts (NOT Pers Inj/Prod Liab)	39	55	47	-14.5%
I - Copyright, Patent, and Trademark	38	20	13	-35.0%
J - Civil Rights	81	63	103	63.5%
K - Antitrust		1	1	0.0%
L - All Other Civil	56	49	68	38.8%

NOTE: A complete list of Nature of Suits used in each category can be found in Appendix A. Chart above does not include all types of cases - the remaining type(s) are found on the next page. Data here are comparable to Table C-2 Civil Cases information published by the AO.

Divisional Caseload Statistics

Civil Filed Cases by Major Case Type - Tucson

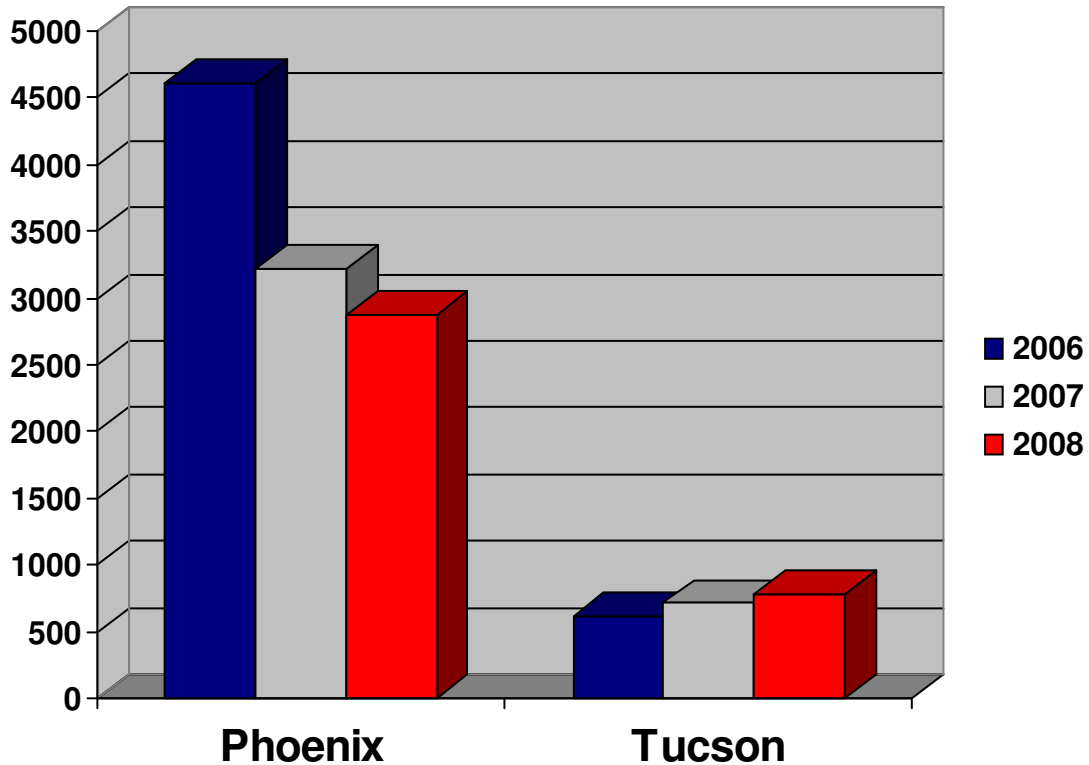


	2006	2007	2008	% Increase '07 to '08
A - Social Security	25	39	30	-23.1%
B - Personal Injury/Product Liability	6	7	8	14.3%
C - Prisoner Petitions	359	353	368	4.2%
D - Forfeitures/Penalties and Tax Suits	28	20	13	-35.0%
E - Real Property	10	2	30	1400.0%
F - Labor Suits	19	8	11	37.5%
G - Contracts	57	57	51	-10.5%
H - Torts (NOT Pers Inj/Prod Liab)	39	55	47	-14.5%
I - Copyright, Patent, and Trademark	38	20	13	-35.0%
J - Civil Rights	81	63	103	63.5%
K - Antitrust		1	1	0.0%
L - All Other Civil	56	49	68	38.8%

NOTE: A complete list of Nature of Suits used in each category can be found in Appendix A. Chart above does not include all types of cases - the remaining type(s) are found on the previous page. Data here are comparable to Table C-2 Civil Cases information published by the AO.

Divisional Caseload Statistics

Civil Terminated Cases

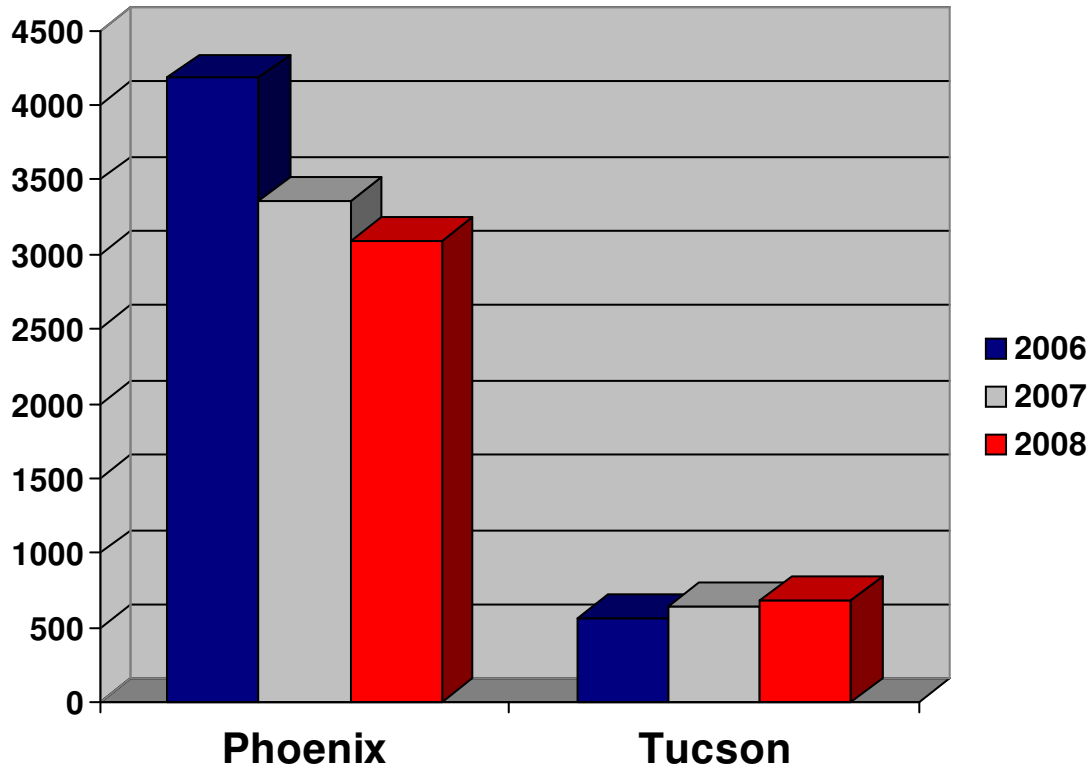


	2006	2007	2008	% Increase '07 to '08
Phoenix	4,605	3,215	2,880	-10.4%
Tucson	620	711	785	10.4%
Civil Total	5,225	3,926	3,665	-6.6%

NOTE: Termination of a civil case is the final settlement in the case. Terminations include both civil and sealed cases. Data here are comparable to Table C-2 Civil Case information published by the AO. Data here are comparable to Table C-1 Civil Cases information published by the AO.

Divisional Caseload Statistics

Civil Terminated Weighted Cases*

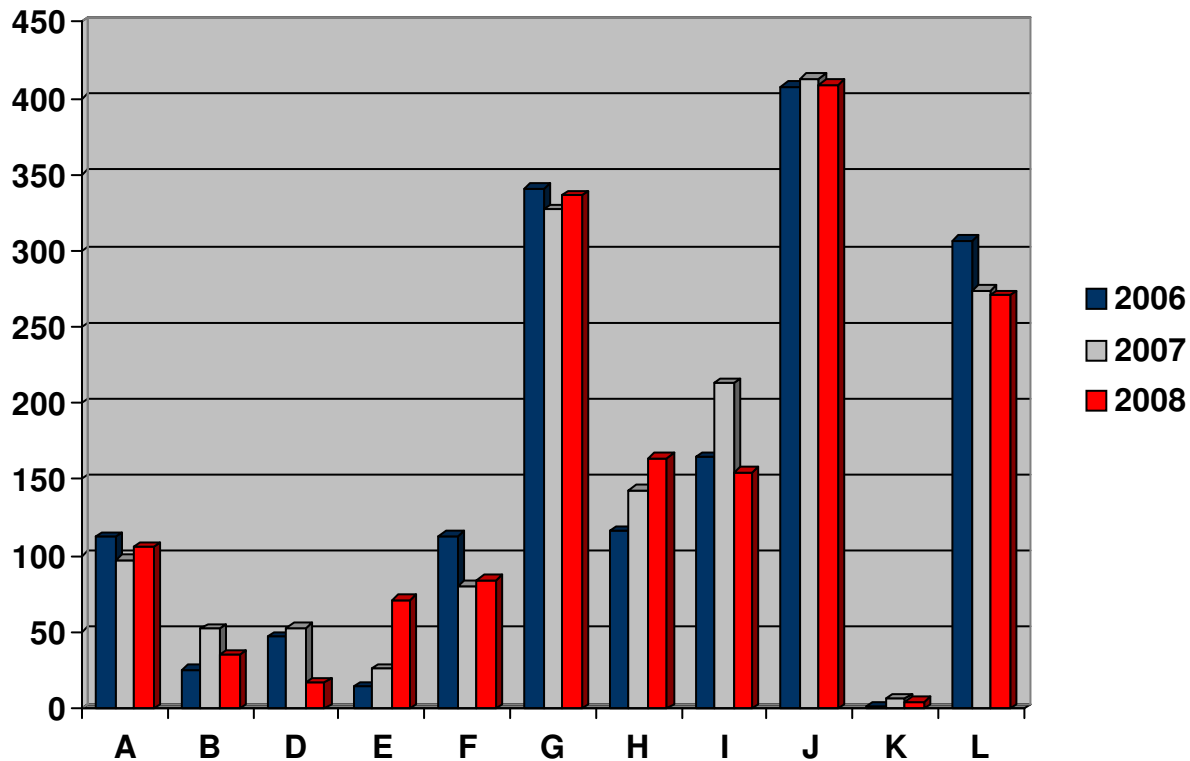


	2006	2007	2008	% Increase '07 to '08
Phoenix	4,184	3,361	3,092	-8.0%
Tucson	567	645	683	5.9%
Civil Total	4,751	4,005	3,775	-5.7%

NOTE: Weighted case terminations differ from case terminations in general as they only include original proceedings, removals from state court, and transfers from other districts. All other case types (remands, reopens, etc) are excluded.

Divisional Caseload Statistics

Civil Terminated Cases by Major Case Type - Phoenix

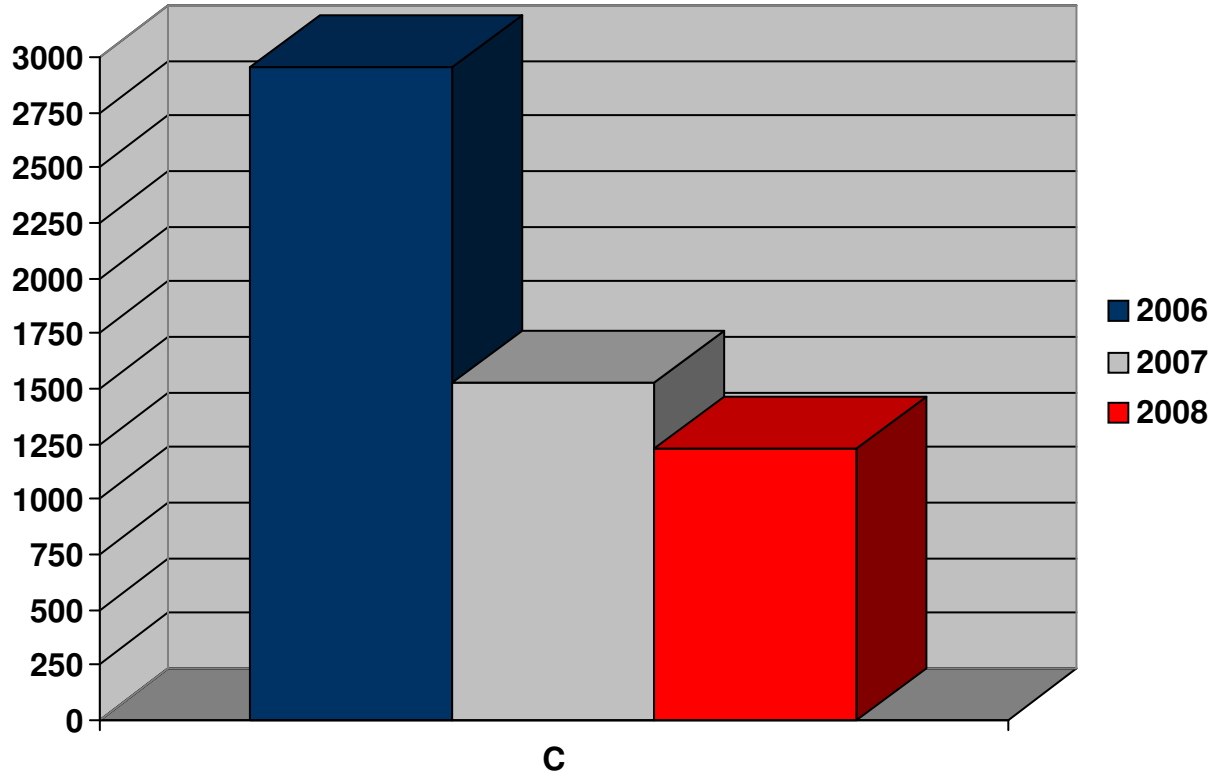


	2006	2007	2008	% Increase '07 to '08
A - Social Security	112	97	106	9.3%
B - Personal Injury/Product Liability	25	52	35	-32.7%
C - Prisoner Petitions	2,956	1,531	1,228	-19.8%
D - Forfeitures/Penalties and Tax Suits	47	53	17	-67.9%
E - Real Property	14	26	71	173.1%
F - Labor Suits	113	80	84	5.0%
G - Contracts	341	327	336	2.8%
H - Torts (NOT Pers Inj/Prod Liab)	116	143	164	14.7%
I - Copyright, Patent, and Trademark	165	213	155	-27.2%
J - Civil Rights	408	413	409	-1.0%
K - Antitrust	1	6	4	-33.3%
L - All Other Civil	307	274	271	-1.1%

NOTE: A complete list of Nature of Suits used in each category can be found in Appendix A.
 Chart above does not include all types of cases - the remaining type(s) are found on the next page.
 Data here are comparable to Table C-4 Civil Cases information published by the AO.

Divisional Caseload Statistics

Civil Terminated Cases by Major Case Type - Phoenix

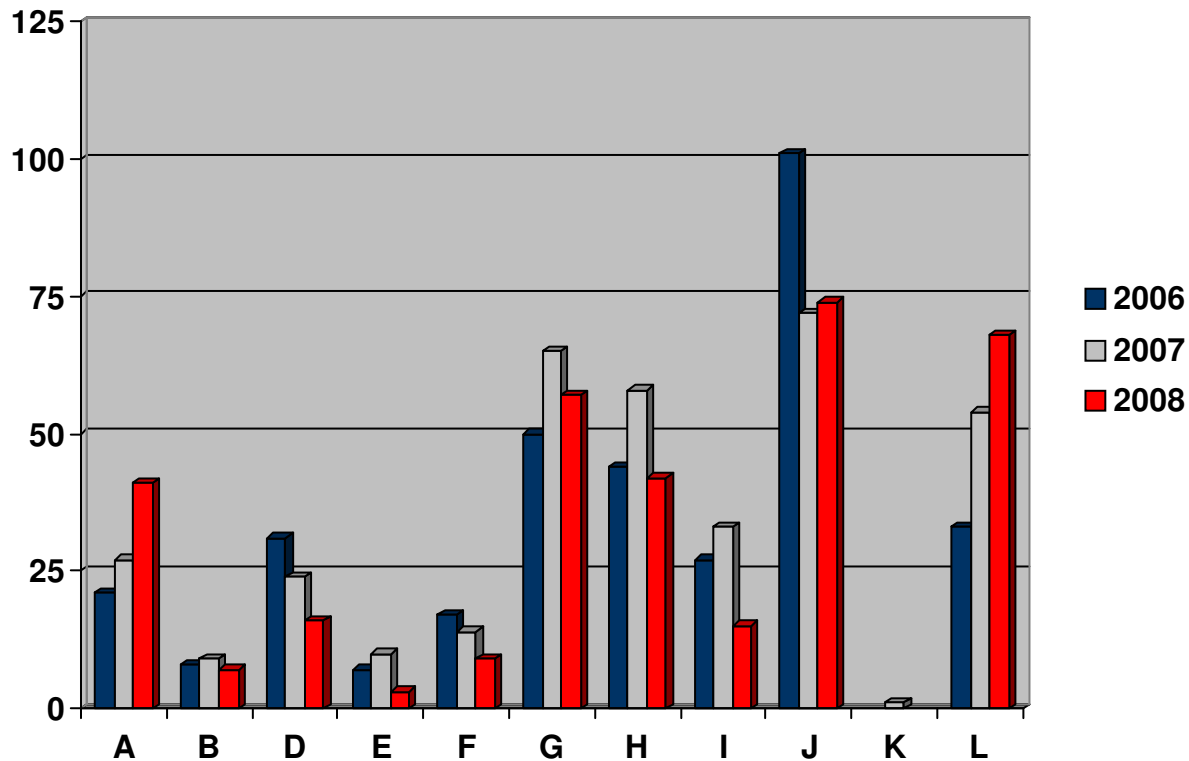


	2006	2007	2008	% Increase '07 to '08
A - Social Security	112	97	106	9.3%
B - Personal Injury/Product Liability	25	52	35	-32.7%
C - Prisoner Petitions	2,956	1,531	1,228	-19.8%
D - Forfeitures/Penalties and Tax Suits	47	53	17	-67.9%
E - Real Property	14	26	71	173.1%
F - Labor Suits	113	80	84	5.0%
G - Contracts	341	327	336	2.8%
H - Torts (NOT Pers Inj/Prod Liab)	116	143	164	14.7%
I - Copyright, Patent, and Trademark	165	213	155	-27.2%
J - Civil Rights	408	413	409	-1.0%
K - Antitrust	1	6	4	-33.3%
L - All Other Civil	307	274	271	-1.1%

NOTE: A complete list of Nature of Suits used in each category can be found in Appendix A. Chart above does not include all types of cases - the remaining type(s) are found on the previous page. Data here are comparable to Table C-4 Civil Cases information published by the AO.

Divisional Caseload Statistics

Civil Terminated Cases by Major Case Type - Tucson

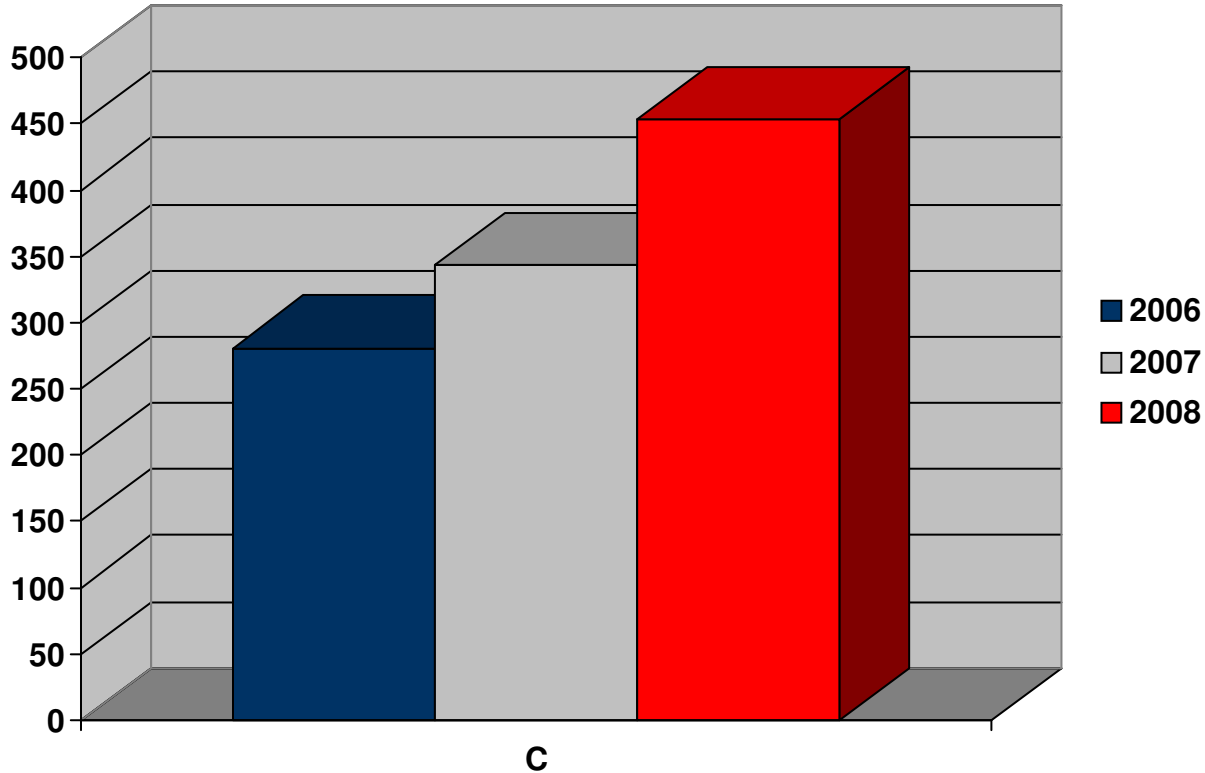


	2006	2007	2008	% Increase '07 to '08
A - Social Security	21	27	41	51.9%
B - Personal Injury/Product Liability	8	9	7	-22.2%
C - Prisoner Petitions	281	344	453	31.7%
D - Forfeitures/Penalties and Tax Suits	31	24	16	-33.3%
E - Real Property	7	10	3	-70.0%
F - Labor Suits	17	14	9	-35.7%
G - Contracts	50	65	57	-12.3%
H - Torts (NOT Pers Inj/Prod Liab)	44	58	42	-27.6%
I - Copyright, Patent, and Trademark	27	33	15	-54.5%
J - Civil Rights	101	72	74	2.8%
K - Antitrust		1		
L - All Other Civil	33	54	68	25.9%

NOTE: A complete list of Nature of Suits used in each category can be found in Appendix A.
 Chart above does not include all types of cases - the remaining type(s) are found on the next page.
 Data here are comparable to Table C-4 Civil Cases information published by the AO.

Divisional Caseload Statistics

Civil Terminated Cases by Major Case Type - Tucson

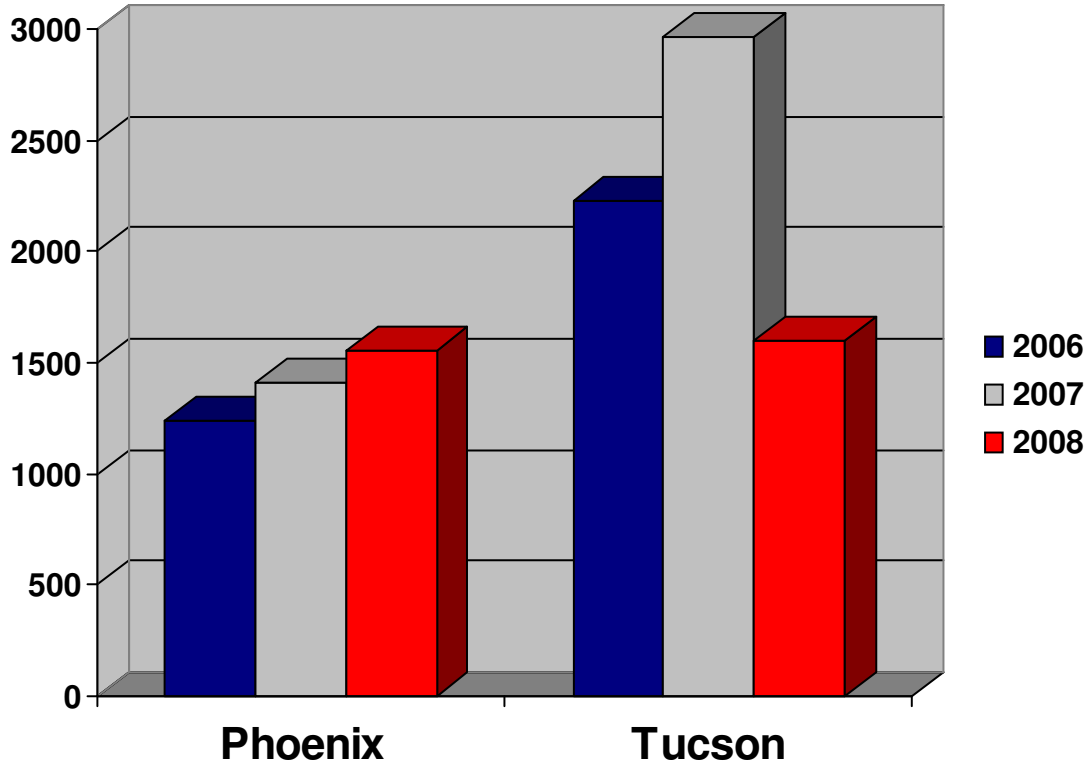


	2006	2007	2008	% Increase '07 to '08
A - Social Security	21	27	41	51.9%
B - Personal Injury/Product Liability	8	9	7	-22.2%
C - Prisoner Petitions	281	344	453	31.7%
D - Forfeitures/Penalties and Tax Suits	31	24	16	-33.3%
E - Real Property	7	10	3	-70.0%
F - Labor Suits	17	14	9	-35.7%
G - Contracts	50	65	57	-12.3%
H - Torts (NOT Pers Inj/Prod Liab)	44	58	42	-27.6%
I - Copyright, Patent, and Trademark	27	33	15	-54.5%
J - Civil Rights	101	72	74	2.8%
K - Antitrust		1		
L - All Other Civil	33	54	68	25.9%

NOTE: A complete list of Nature of Suits used in each category can be found in Appendix A. Chart above does not include all types of cases - the remaining type(s) are found on the previous page. Data here are comparable to Table C-4 Civil Cases information published by the AO.

Divisional Caseload Statistics

Criminal Cases Filed

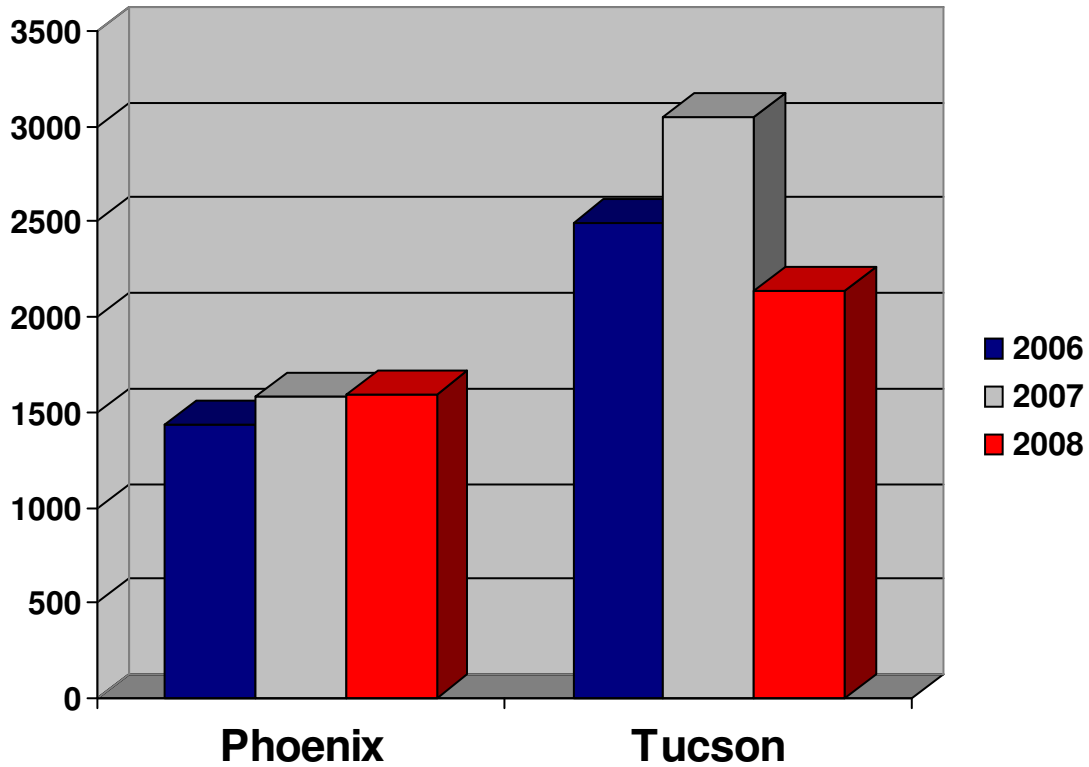


	2006	2007	2008	% Increase '07 to '08
Phoenix	1,240	1,408	1,555	10.4%
Tucson	2,231	2,964	1,602	-46.0%
Cases Total	3,471	4,372	3,157	-27.8%

NOTE: Criminal case filings represent felony cases and Class A Misdemeanor cases where defendant(s) consented to proceed before a Magistrate Judge. Data here are comparable to Table D-1 Cases information published by the AO.

Divisional Caseload Statistics

Criminal Cases Terminated

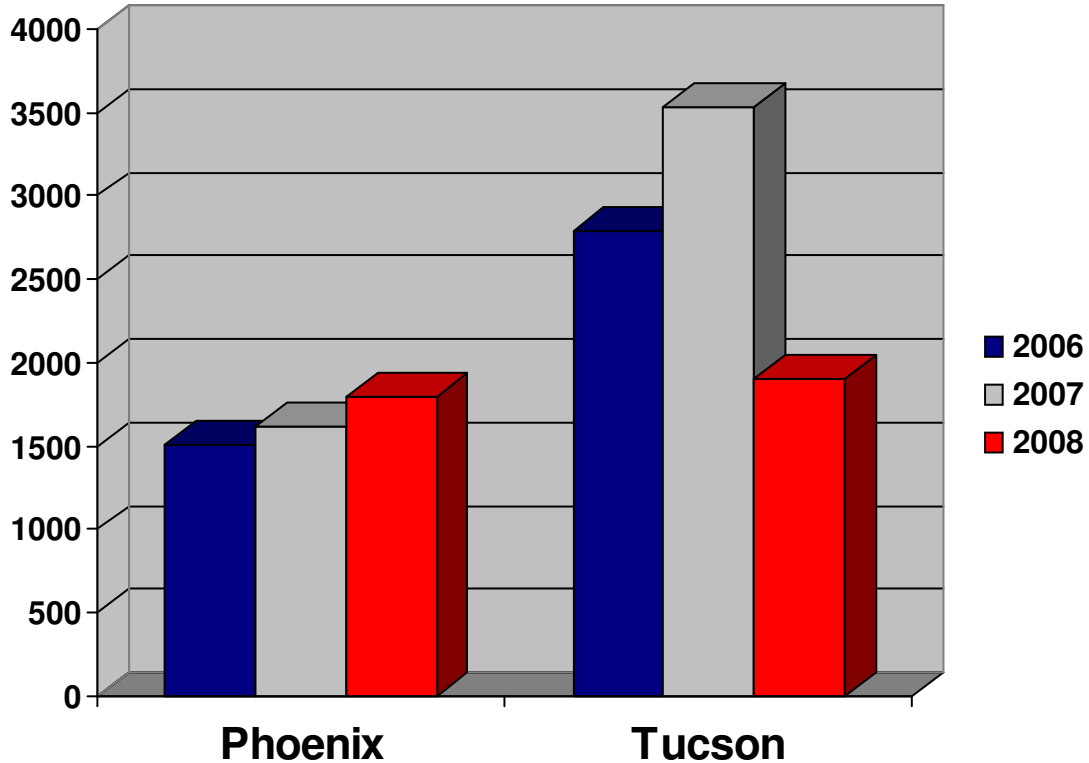


	2006	2007	2008	% Increase '07 to '08
Phoenix	1,438	1,581	1,596	0.9%
Tucson	2,492	3,050	2,134	-30.0%
Cases Total	3,930	4,631	3,730	-19.5%

NOTE: Criminal case terminations represents felony cases and Class A Misdemeanor cases where defendant(s) consented to proceed before a Magistrate Judge. Data here are comparable to Table D-1 Cases information published by the AO.

Divisional Caseload Statistics

Criminal Defendants Filed

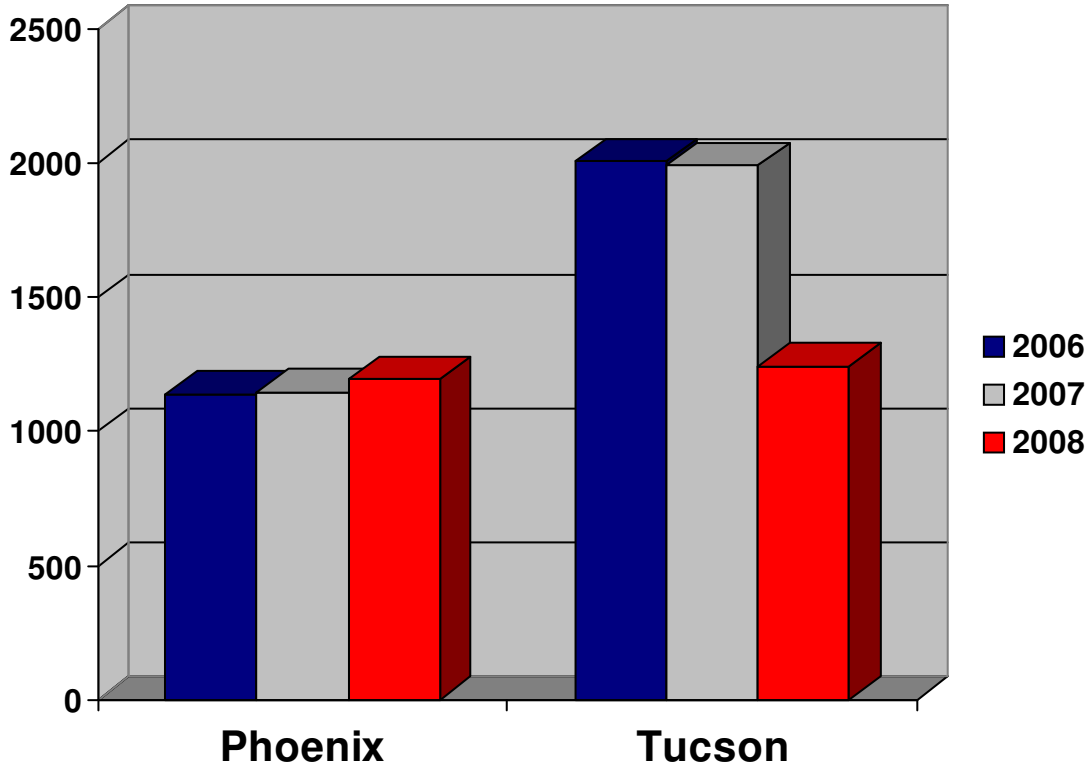


	2006	2007	2008	% Increase '07 to '08
Phoenix	1,509	1,617	1,793	10.9%
Tucson	2,795	3,531	1,904	-46.1%
Dfts Total	4,304	5,148	3,697	-28.2%

NOTE: Each filing is associated with a single defendant against whom criminal charges have been filed. When a case involves multiple defendants, multiple filings are reported. Criminal defendant filings represent felony defendants and Class A Misdemeanor defendants who consented to proceed before a Magistrate Judge. Data here are comparable to Table D-1 Defendants information published by the AO.

Divisional Caseload Statistics

Criminal Filed Weighted Defendants*

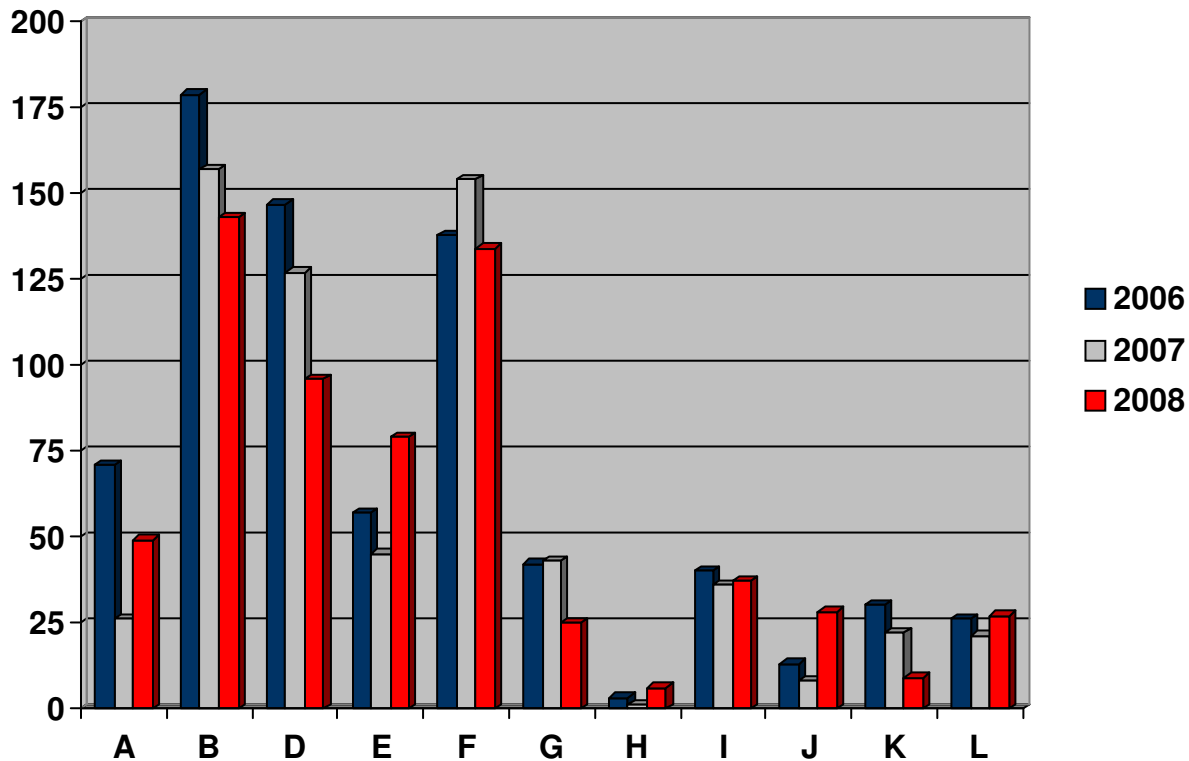


	2006	2007	2008	% Increase '07 to '08
Phoenix	1,139	1,147	1,194	4.1%
Tucson	2,005	1,991	1,241	-37.7%
Dfts Total	3,144	3,138	2,435	-22.4%

NOTE: Weighted defendant filings differ from defendant filings in general as they only include original proceedings, removals from state court, and transfers from other districts. All other defendant filing types (remands, reopens, retrials, reinstatements, etc) are excluded. When multiple criminal charges are filed against a defendant, the most severe charge is counted for weighting purposes.

Divisional Caseload Statistics

Criminal Defendants Filed by Major Case Type - Phoenix

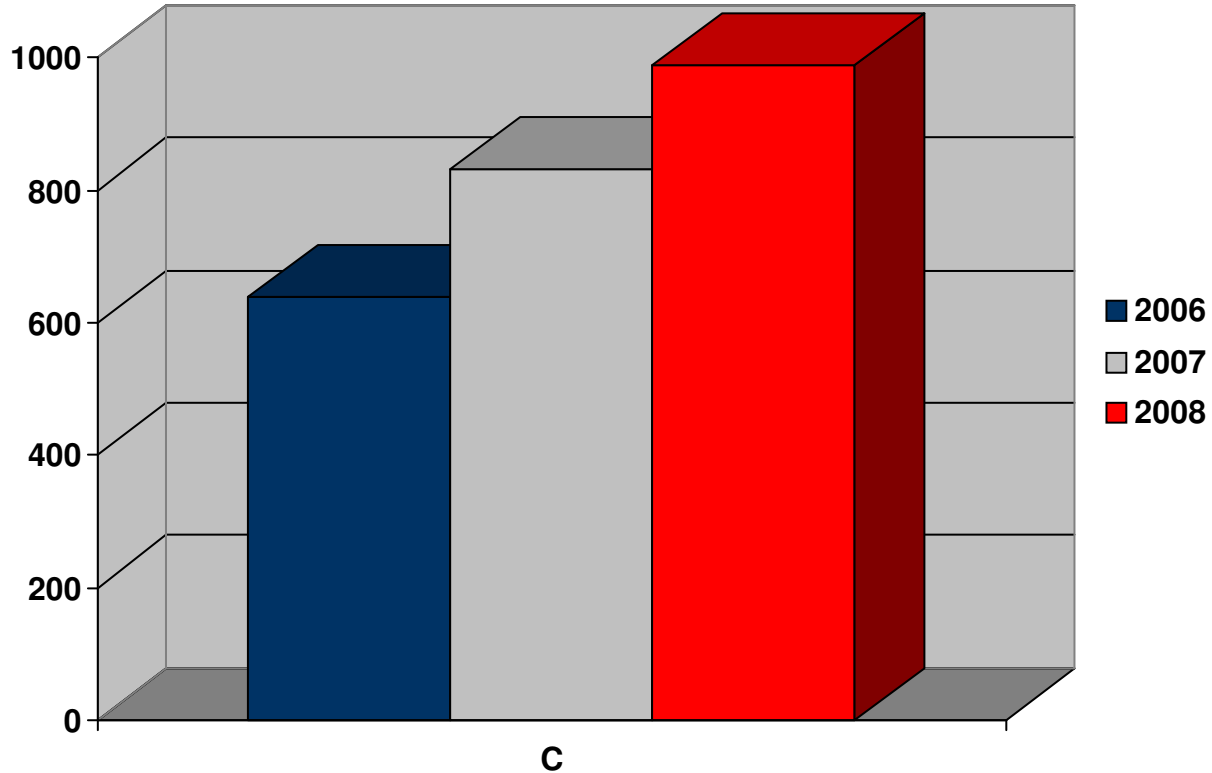


	2006	2007	2008	% Increase '07 to '08
A - Marijuana	71	26	49	88.5%
B - All Other Drugs	179	157	143	-8.9%
C - Immigration	639	832	989	18.9%
D - Firearms and Explosives	147	127	96	-24.4%
E - Fraud	57	45	79	75.6%
F - Violent Offenses	138	154	134	-13.0%
G - Sex Offenses	42	43	25	-41.9%
H - Forgery and Counterfeiting	3	1	6	500.0%
I - Larceny and Theft	40	36	37	2.8%
J - Justice System Offenses	13	8	28	250.0%
K - Regulatory Offenses	30	22	9	-59.1%
L - All Other Criminal Felony Cases	26	21	27	28.6%

NOTE: A complete list of Offense Types used in each category can be found in Appendix B. Chart above does not include all types of offenses - the remaining type(s) are found on the next page. Data here are comparable to Table D-2 Defendants information published by the AO.

Divisional Caseload Statistics

Criminal Defendants Filed by Major Case Type - Phoenix

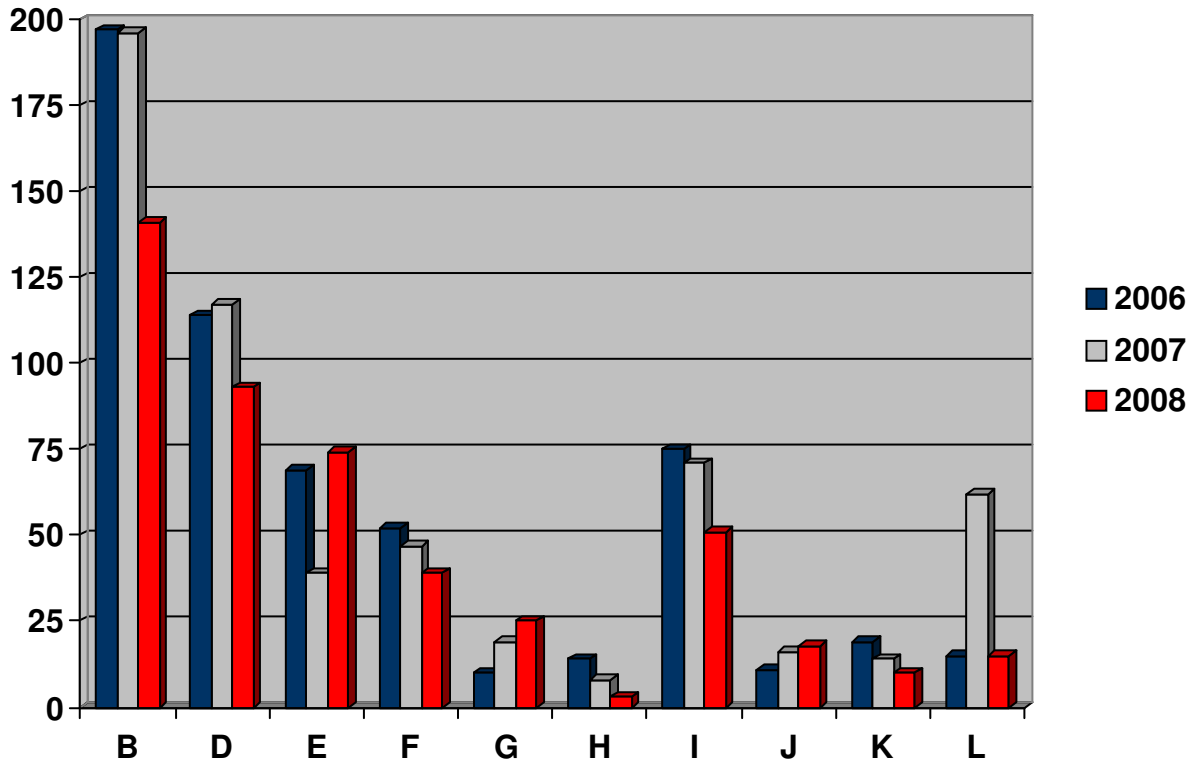


	2006	2007	2008	% Increase '07 to '08
A - Marijuana	71	26	49	88.5%
B - All Other Drugs	179	157	143	-8.9%
C - Immigration	639	832	989	18.9%
D - Firearms and Explosives	147	127	96	-24.4%
E - Fraud	57	45	79	75.6%
F - Violent Offenses	138	154	134	-13.0%
G - Sex Offenses	42	43	25	-41.9%
H - Forgery and Counterfeiting	3	1	6	500.0%
I - Larceny and Theft	40	36	37	2.8%
J - Justice System Offenses	13	8	28	250.0%
K - Regulatory Offenses	30	22	9	-59.1%
L - All Other Criminal Felony Cases	26	21	27	28.6%

NOTE: A complete list of Offense Types used in each category can be found in Appendix B.
 Chart above does not include all types of offenses - the remaining type(s) are found on the previous page.
 Data here are comparable to Table D-2 Defendants information published by the AO.

Divisional Caseload Statistics

Criminal Defendants Filed by Major Case Type - Tucson

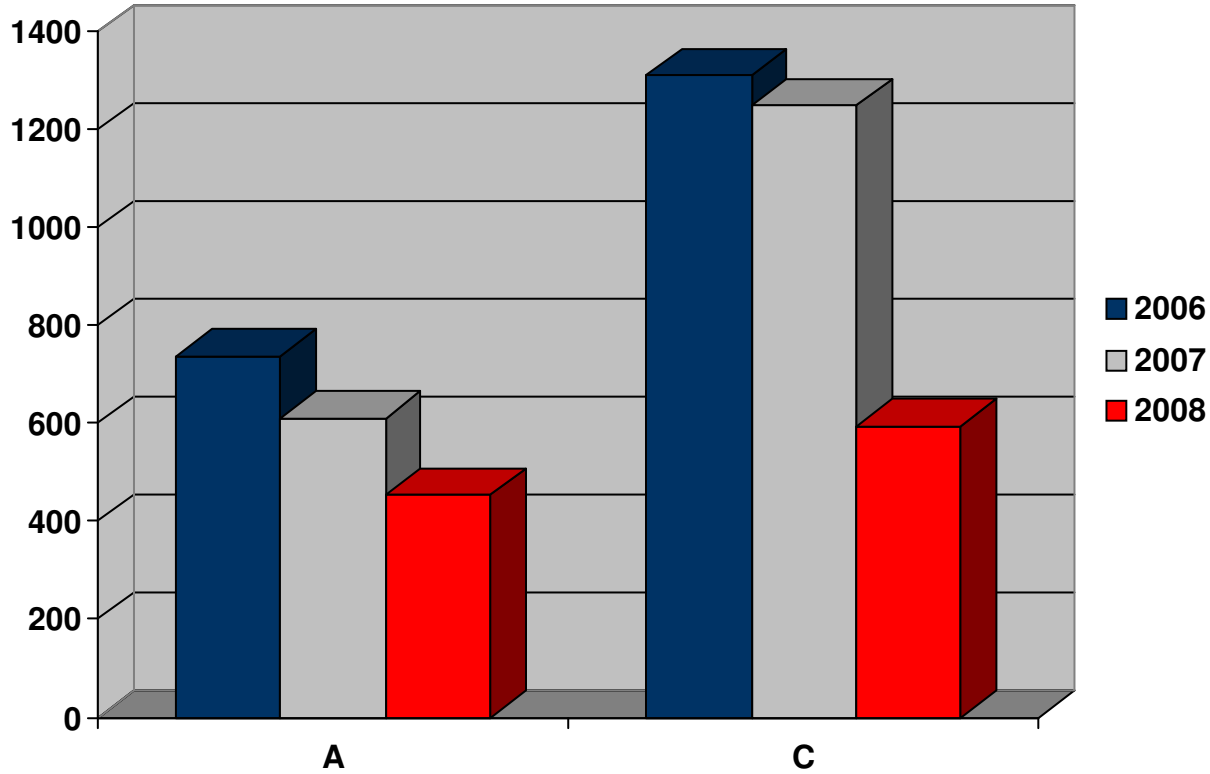


	2006	2007	2008	% Increase '07 to '08
A - Marijuana	736	610	453	-25.7%
B - All Other Drugs	197	196	141	-28.1%
C - Immigration	1,309	1,248	593	-52.5%
D - Firearms and Explosives	114	117	93	-20.5%
E - Fraud	69	39	74	89.7%
F - Violent Offenses	52	47	39	-17.0%
G - Sex Offenses	10	19	25	31.6%
H - Forgery and Counterfeiting	14	8	3	-62.5%
I - Larceny and Theft	75	71	51	-28.2%
J - Justice System Offenses	11	16	18	12.5%
K - Regulatory Offenses	19	14	10	-28.6%
L - All Other Criminal Felony Cases	15	62	15	-75.8%

NOTE: A complete list of Offense Types used in each category can be found in Appendix B. Chart above does not include all types of offenses - the remaining type(s) are found on the next page. Data here are comparable to Table D-2 Defendants information published by the AO.

Divisional Caseload Statistics

Criminal Defendants Filed by Major Case Type - Tucson

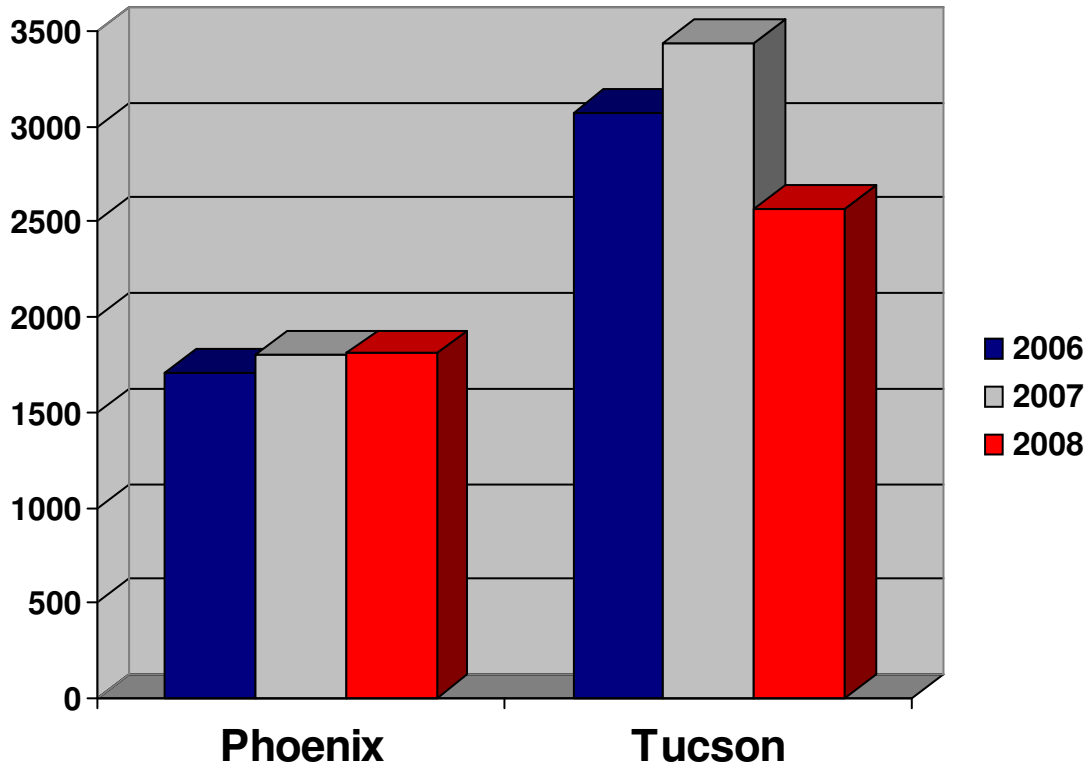


	2006	2007	2008	% Increase '07 to '08
A - Marijuana	736	610	453	-25.7%
B - All Other Drugs	197	196	141	-28.1%
C - Immigration	1,309	1,248	593	-52.5%
D - Firearms and Explosives	114	117	93	-20.5%
E - Fraud	69	39	74	89.7%
F - Violent Offenses	52	47	39	-17.0%
G - Sex Offenses	10	19	25	31.6%
H - Forgery and Counterfeiting	14	8	3	-62.5%
I - Larceny and Theft	75	71	51	-28.2%
J - Justice System Offenses	11	16	18	12.5%
K - Regulatory Offenses	19	14	10	-28.6%
L - All Other Criminal Felony Cases	15	62	15	-75.8%

NOTE: A complete list of Offense Types used in each category can be found in Appendix B.
 Chart above does not include all types of offenses - the remaining type(s) are found on the previous page.
 Data here are comparable to Table D-2 Defendants information published by the AO.

Divisional Caseload Statistics

Criminal Defendants Terminated

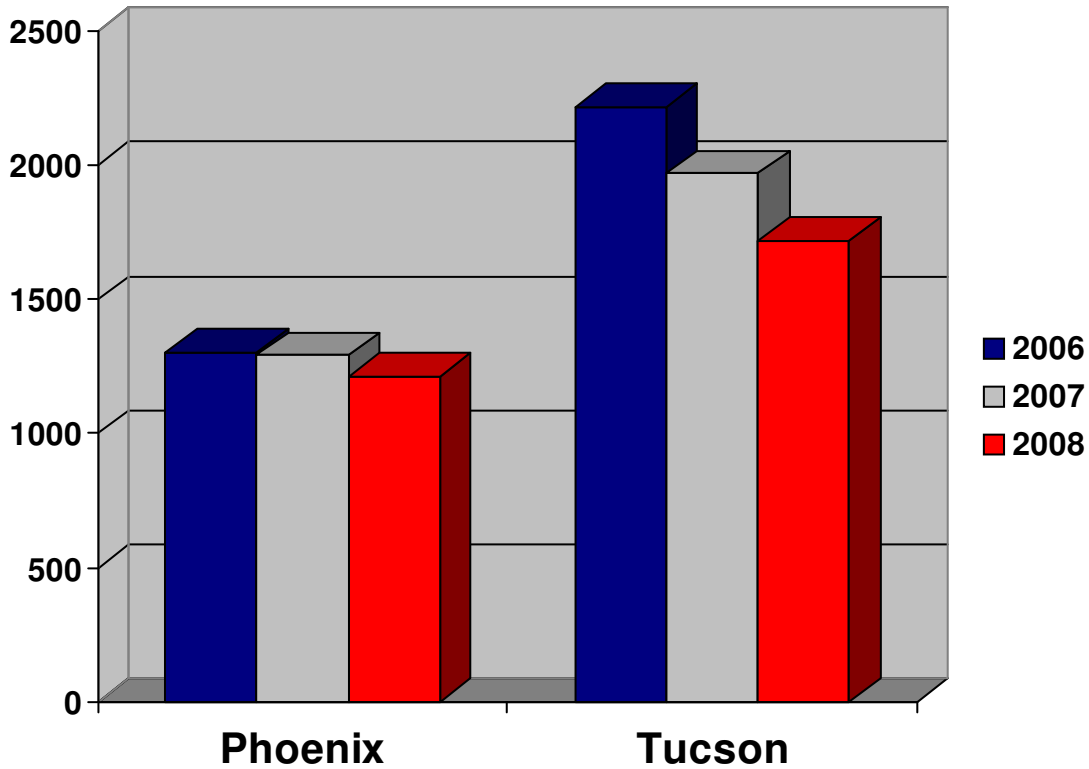


	2006	2007	2008	% Increase '07 to '08
Phoenix	1,509	1,617	1,793	10.9%
Tucson	2,795	3,531	1,904	-46.1%
Dfts Total	4,304	5,148	3,697	-28.2%

NOTE: Each termination is associated with a single defendant against whom criminal charges have been terminated. Criminal defendant terminations represents felony defendants and Class A Misdemeanor defendants who consented to proceed before a Magistrate Judge. Data here are comparable to Table D-1 Defendants information published by the AO.

Divisional Caseload Statistics

Criminal Terminated Defendants Weighted*

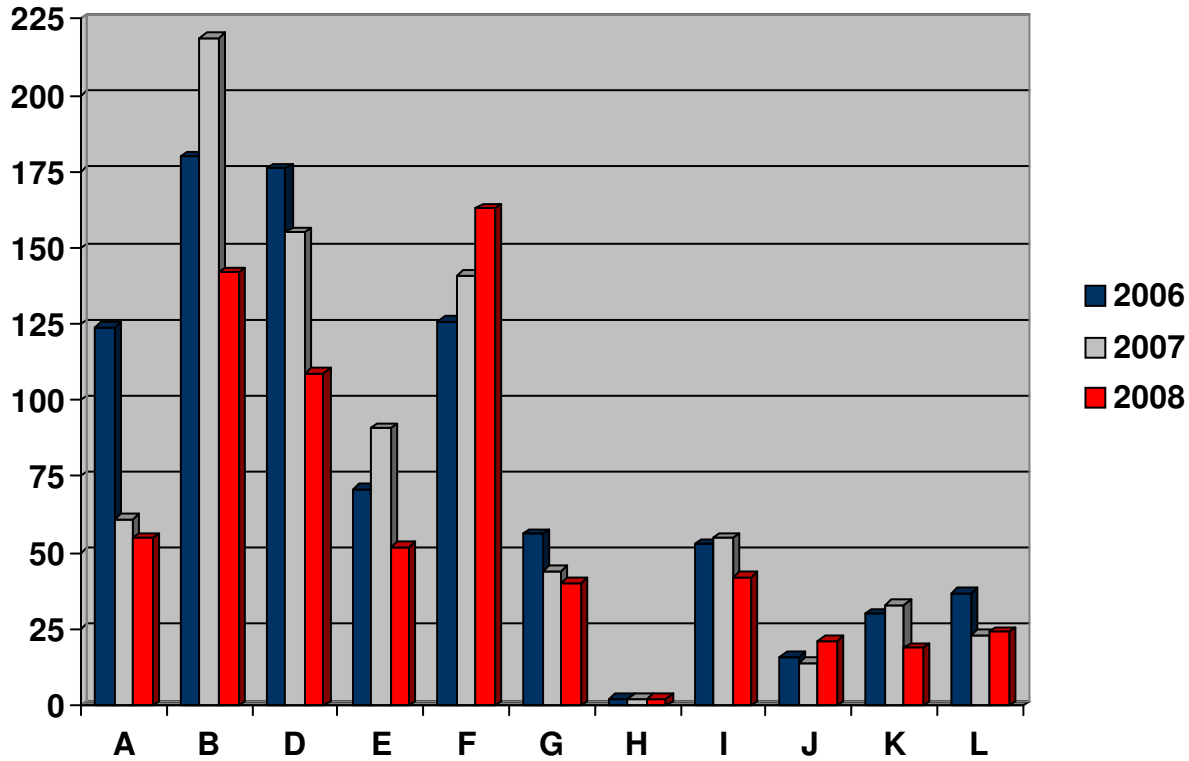


	2006	2007	2008	% Increase '07 to '08
Phoenix	1,301	1,290	1,215	-5.8%
Tucson	2,214	1,968	1,717	-12.7%
Dfts Total	3,515	3,258	2,932	-10.0%

NOTE: Weighted defendant terminations differ from defendant terminations in general as they only include original proceedings, removals from state court, and transfers from other districts. All other defendant types (remands, reopens, retrials, reinstatements, etc) are excluded. When multiple criminal charges are terminated for a defendant, the most severe charge is counted for weighting purposes.

Divisional Caseload Statistics

Criminal Defendants Terminated by Major Case Type - Phoenix

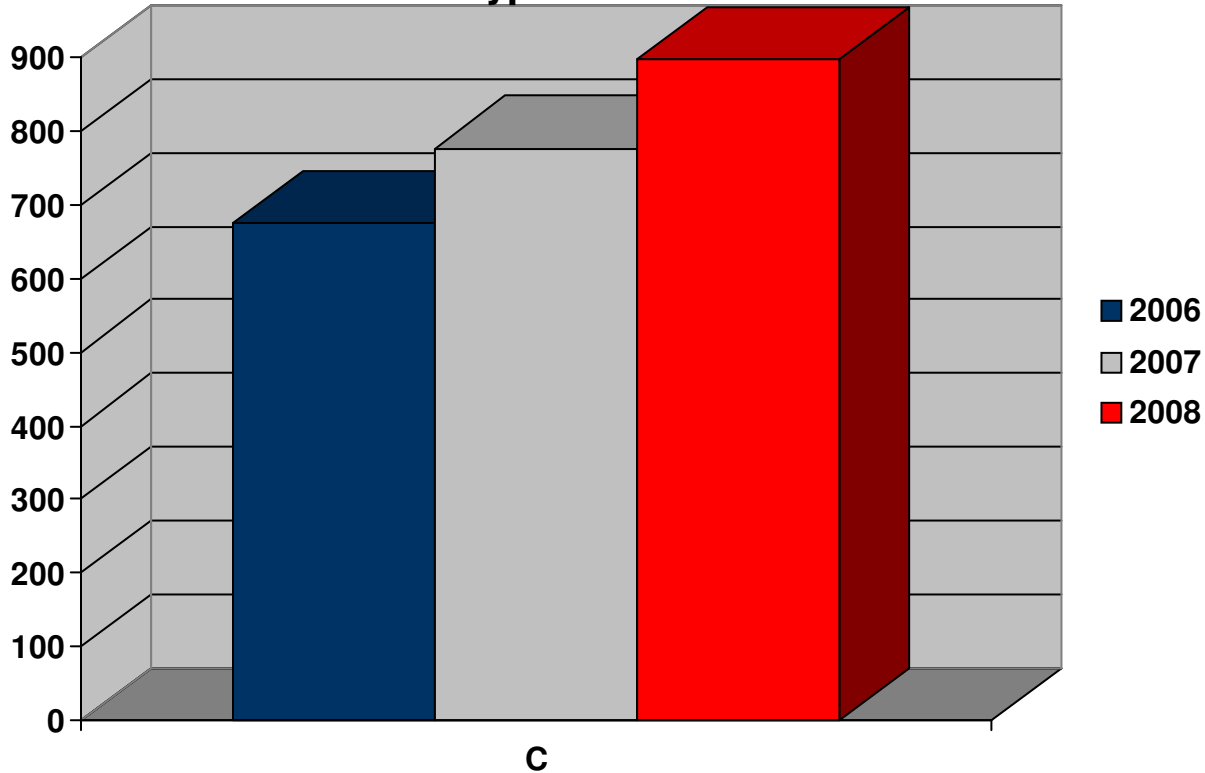


	2006	2007	2008	% Increase '07 to '08
A - Marijuana	124	61	55	-9.8%
B - All Other Drugs	180	219	142	-35.2%
C - Immigration	675	777	898	15.6%
D - Firearms and Explosives	176	155	109	-29.7%
E - Fraud	71	91	52	-42.9%
F - Violent Offenses	126	141	163	15.6%
G - Sex Offenses	56	44	40	-9.1%
H - Forgery and Counterfeiting	2	2	2	0.0%
I - Larceny and Theft	53	55	42	-23.6%
J - Justice System Offenses	16	14	21	50.0%
K - Regulatory Offenses	30	33	19	-42.4%
L - All Other Criminal Felony Cases	37	23	24	4.3%

NOTE: A complete list of Offense Types used in each category can be found in Appendix B. Chart above does not include all types of offenses - the remaining type(s) are found on the next page. Data here are comparable to Table D-4 Defendants information published by the AO.

Divisional Caseload Statistics

Criminal Defendants Terminated by Major Case Type - Phoenix

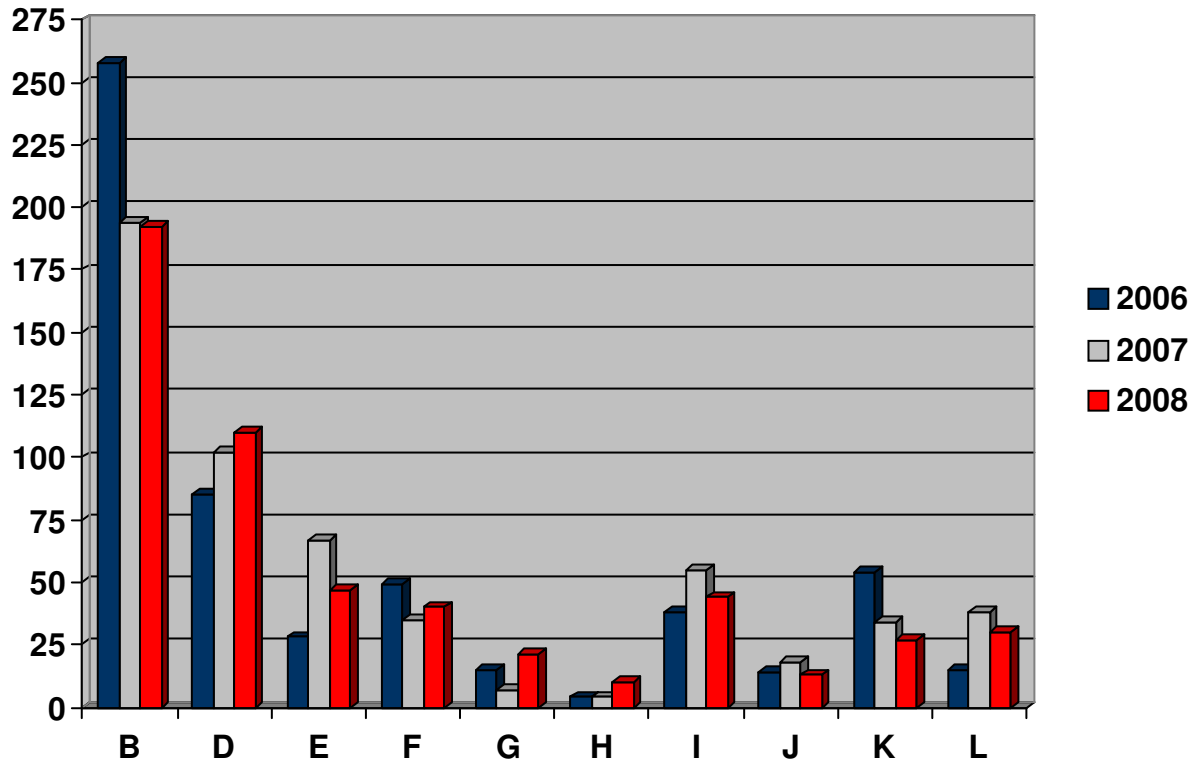


	2006	2007	2008	% Increase '07 to '08
A - Marijuana	124	61	55	-9.8%
B - All Other Drugs	180	219	142	-35.2%
C - Immigration	675	777	898	15.6%
D - Firearms and Explosives	176	155	109	-29.7%
E - Fraud	71	91	52	-42.9%
F - Violent Offenses	126	141	163	15.6%
G - Sex Offenses	56	44	40	-9.1%
H - Forgery and Counterfeiting	2	2	2	0.0%
I - Larceny and Theft	53	55	42	-23.6%
J - Justice System Offenses	16	14	21	50.0%
K - Regulatory Offenses	30	33	19	-42.4%
L - All Other Criminal Felony Cases	37	23	24	4.3%

NOTE: A complete list of Offense Types used in each category can be found in Appendix B. Chart above does not include all types of offenses - the remaining type(s) are found on the previous page. Data here are comparable to Table D-4 Defendants information published by the AO.

Divisional Caseload Statistics

Criminal Defendants Terminated by Major Case Type - Tucson

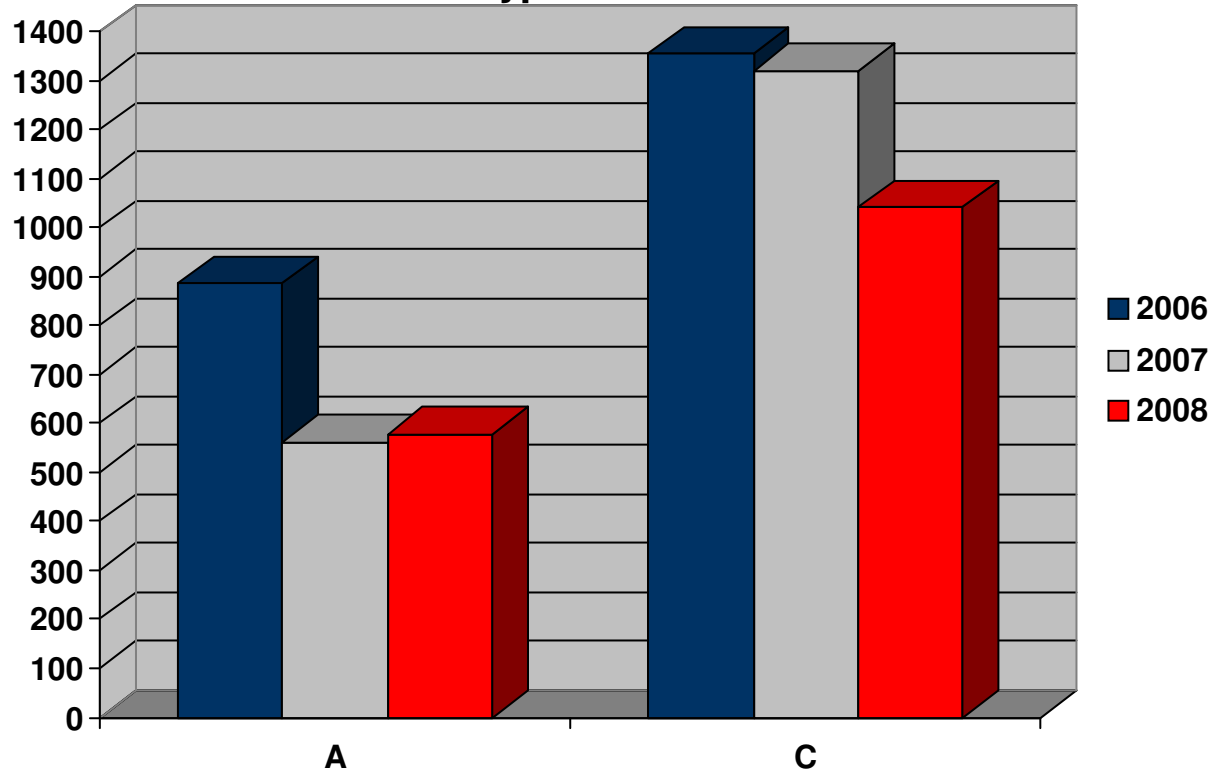


	2006	2007	2008	% Increase '07 to '08
A - Marijuana	886	562	577	2.7%
B - All Other Drugs	258	194	192	-1.0%
C - Immigration	1,354	1,320	1,041	-21.1%
D - Firearms and Explosives	85	102	110	7.8%
E - Fraud	28	67	47	-29.9%
F - Violent Offenses	49	35	40	14.3%
G - Sex Offenses	15	7	21	200.0%
H - Forgery and Counterfeiting	4	4	10	150.0%
I - Larceny and Theft	38	55	44	-20.0%
J - Justice System Offenses	14	18	13	-27.8%
K - Regulatory Offenses	54	34	27	-20.6%
L - All Other Criminal Felony Cases	15	38	30	-21.1%

NOTE: A complete list of Offense Types used in each category can be found in Appendix B.
 Chart above does not include all types of offenses - the remaining type(s) are found on the next page.
 Data here are comparable to Table D-4 Defendants information published by the AO.

Divisional Caseload Statistics

Criminal Defendants Terminated by Major Case Type - Tucson

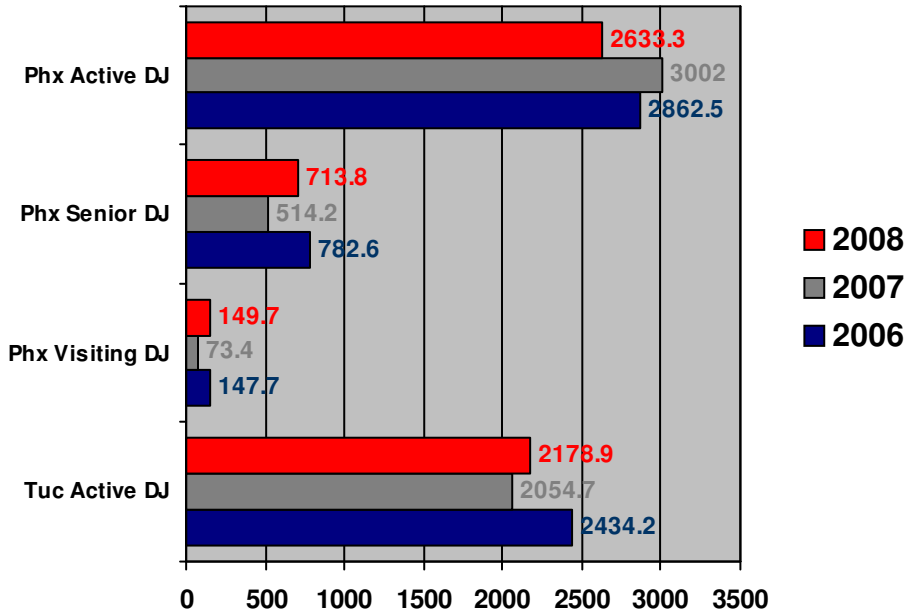


	2006	2007	2008	% Increase '07 to '08
A - Marijuana	886	562	577	2.7%
B - All Other Drugs	258	194	192	-1.0%
C - Immigration	1,354	1,320	1,041	-21.1%
D - Firearms and Explosives	85	102	110	7.8%
E - Fraud	28	67	47	-29.9%
F - Violent Offenses	49	35	40	14.3%
G - Sex Offenses	15	7	21	200.0%
H - Forgery and Counterfeiting	4	4	10	150.0%
I - Larceny and Theft	38	55	44	-20.0%
J - Justice System Offenses	14	18	13	-27.8%
K - Regulatory Offenses	54	34	27	-20.6%
L - All Other Criminal Felony Cases	15	38	30	-21.1%

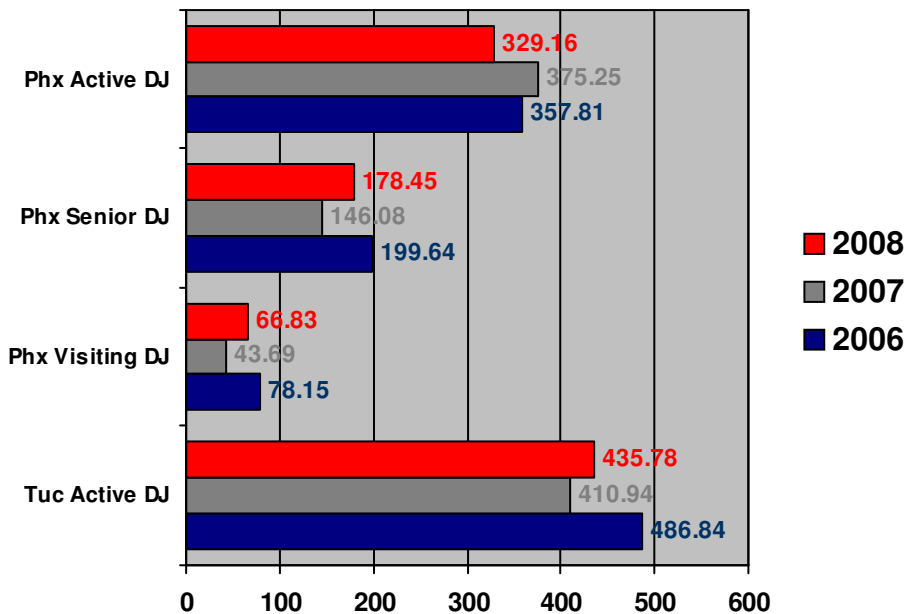
NOTE: A complete list of Offense Types used in each category can be found in Appendix B. Chart above does not include all types of offenses - the remaining type(s) are found on the previous page. Data here are comparable to Table D-4 Defendants information published by the AO.

Divisional Workload Statistics

**District Judge Time in Court
(Yearly Total for All Judges)**



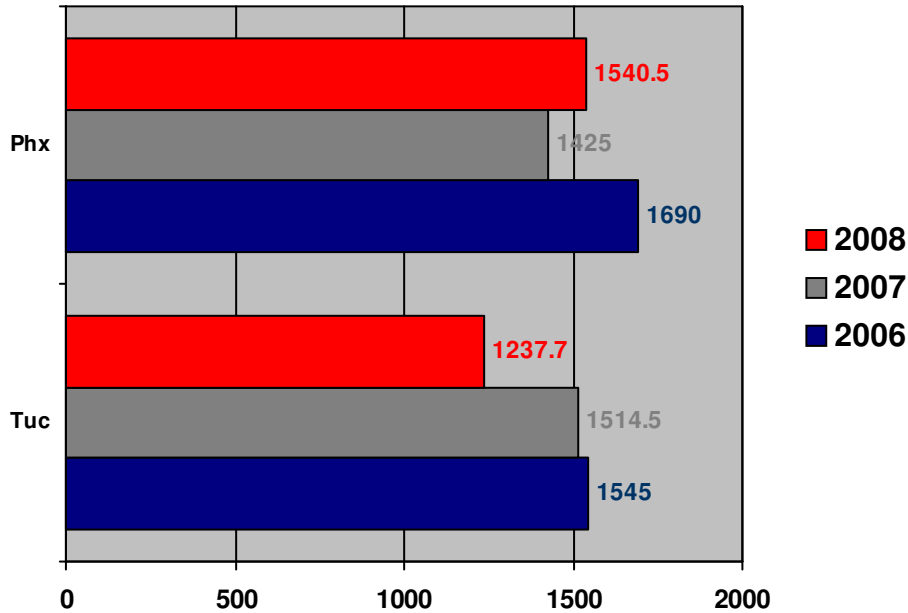
**District Judge Time in Court
(Yearly Avg Per Judge)**



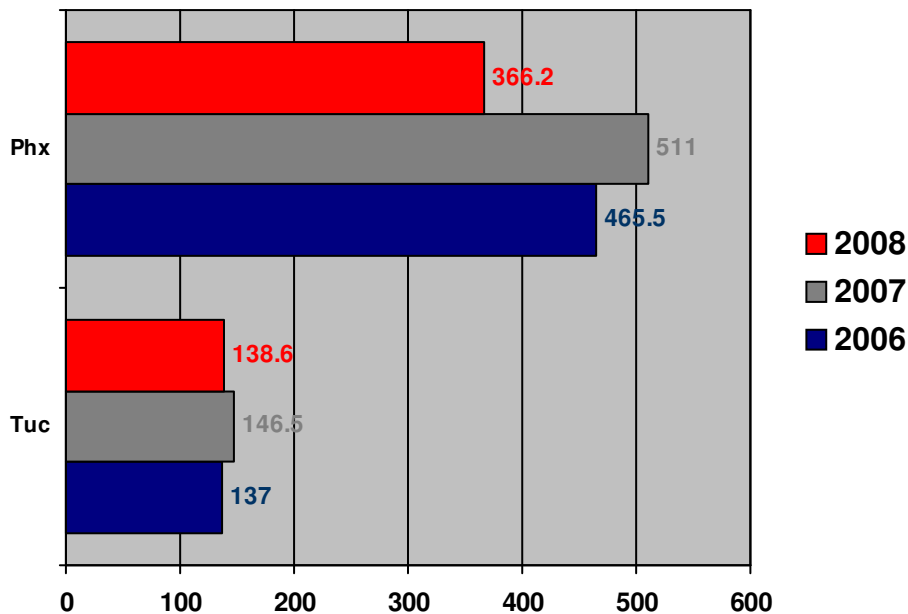
* In 2006, there were nine 9 Visiting Judges. In 2007, there were seven Visiting Judges. In 2008, there were eight Visiting Judges.

Divisional Workload Statistics

**Magistrate Judge Time in Court
(Criminal Total for All Judges)**



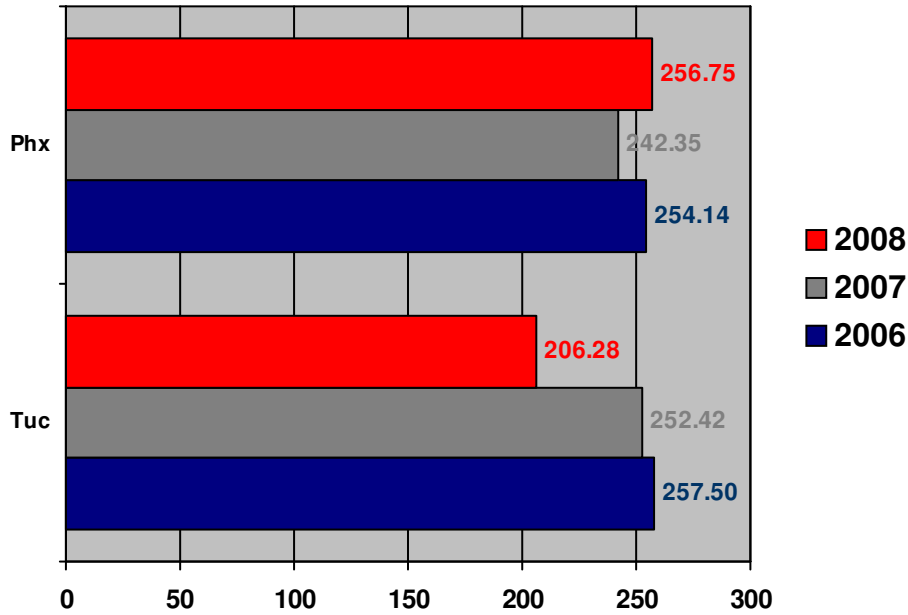
**Magistrate Judge Time in Court
(Civil Total for All Judges)**



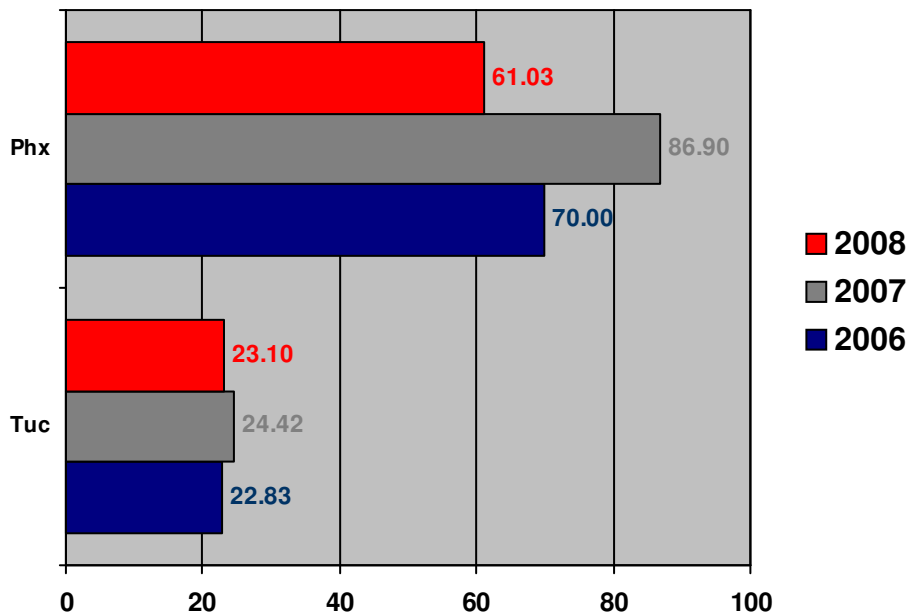
* In 2006, there were six MJ's in Phoenix and one retired MJ for four months; six MJ's in Tucson
 * In 2007, there were six MJ's in Phoenix for ten months and five MJ's for two months; six MJ's in Tucson.
 * In 2008, there were six MJ's in Phoenix, six MJ's in Tucson.

Divisional Workload Statistics

**Magistrate Judge Time in Court
(Criminal Avg Per Judge)**



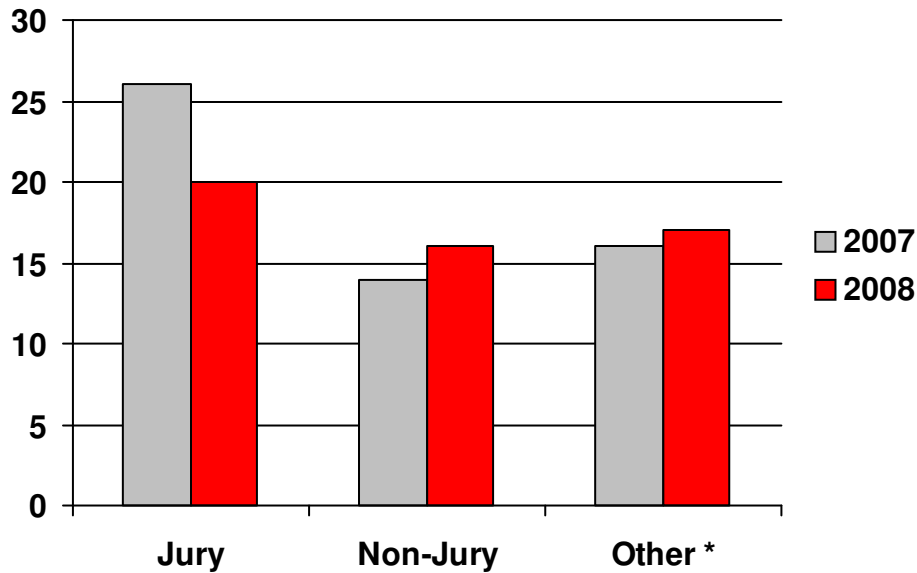
**Magistrate Judge Time in Court
(Civil Avg Per Judge)**



* In 2006, there were six MJ's in Phoenix and one retired MJ for four months; six MJ's in Tucson
 * In 2007, there were six MJ's in Phoenix for ten months and five MJ's for two months; six MJ's in Tucson.
 * In 2008, there were six MJ's in Phoenix, six MJ's in Tucson.

Divisional Workload Statistics

Total Civil Trials - Phoenix

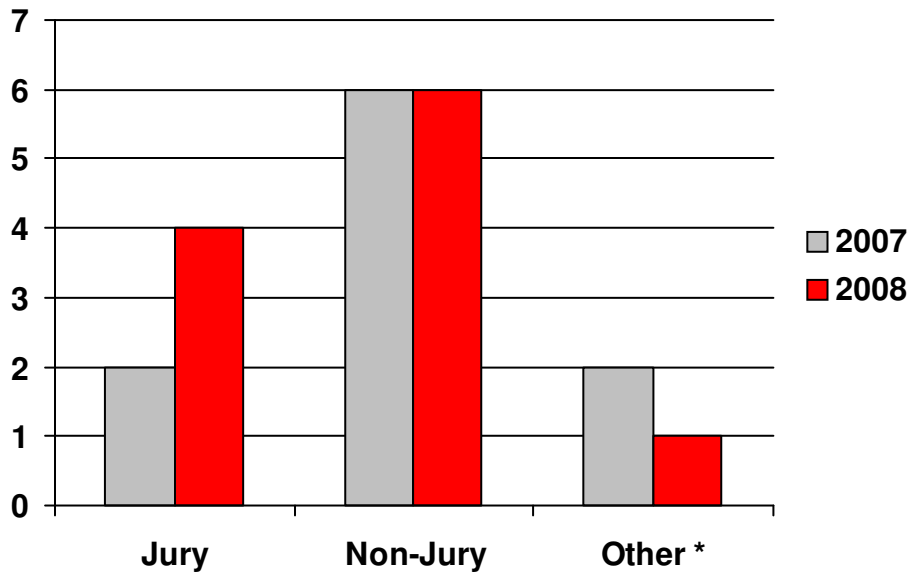


Trial Type	2007	2008	% Increase '07 to '08
Jury	26	20	-23.1%
Non-Jury	14	16	14.3%
Other *	16	17	6.3%
Civil Trial Totals	56	53	-5.4%

NOTE: "Other" trials includes contested hearings on motions for preliminary injunctions, temporary restraining orders, evidence, or other matters not resulting in a final judgment or verdict. Data here are comparable to Table T-1 Civil Trials information published by the AO.

Divisional Workload Statistics

Total Civil Trials - Tucson

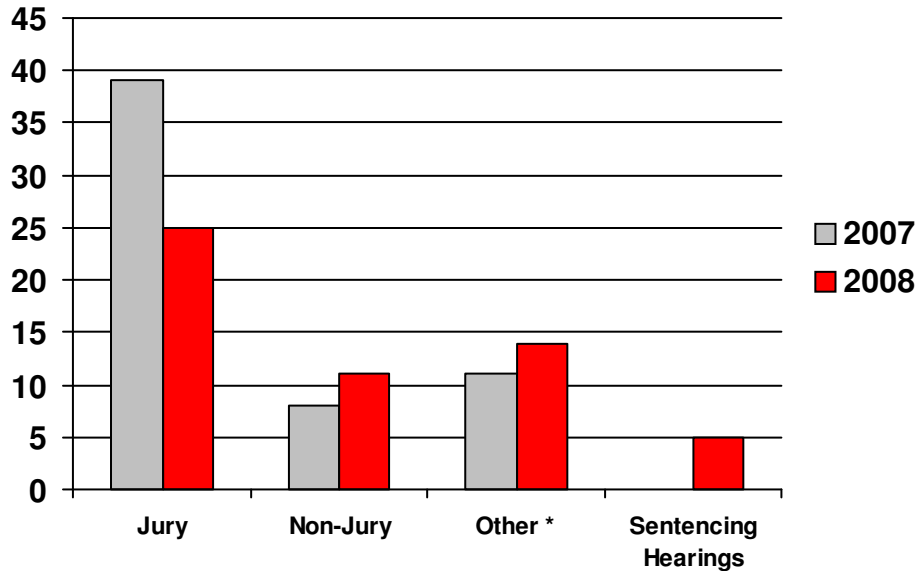


Trial Type	2007	2008	% Increase '07 to '08
Jury	2	4	100.0%
Non-Jury	6	6	0.0%
Other *	2	1	-50.0%
Civil Trial Totals	10	11	10.0%

NOTE: "Other" trials includes contested hearings on motions for preliminary injunctions, temporary restraining orders, evidence, or other matters not resulting in a final judgment or verdict. Data here are comparable to Table T-1 Civil Trials information published by the AO.

Divisional Workload Statistics

Total Criminal Trials - Phoenix

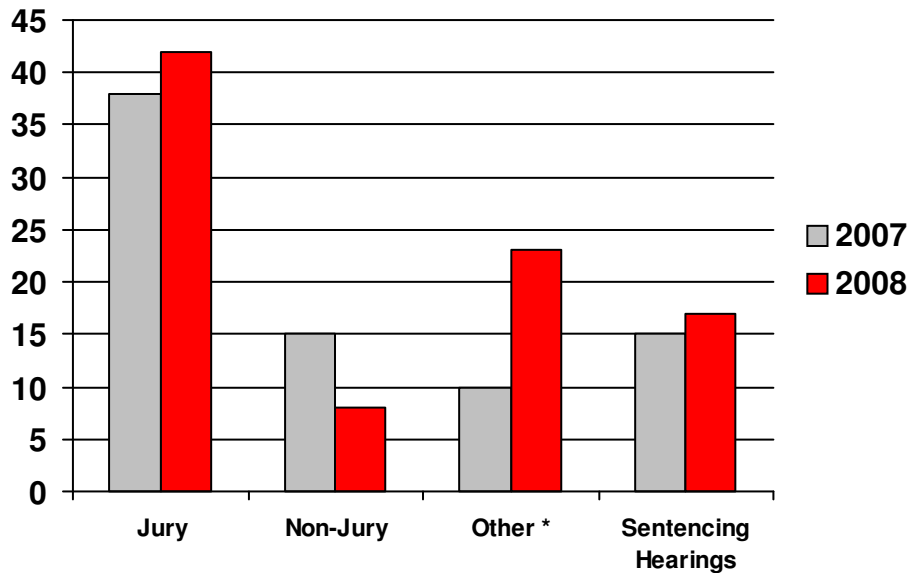


Trial Type	2007	2008	% Increase '07 to '08
Jury	39	25	-35.9%
Non-Jury	8	11	37.5%
Other *	10	14	40.0%
Sentencing Hearings		5	100.0%
Criminal Trial Totals	57	55	-3.5%

NOTE: "Other" trials includes contested hearings on motions for preliminary injunctions, temporary restraining orders, evidence, or other matters not resulting in a final judgment or verdict. Data here are comparable to Table T-1 Criminal Trials information published by the AO.

Divisional Workload Statistics

Total Criminal Trials - Tucson

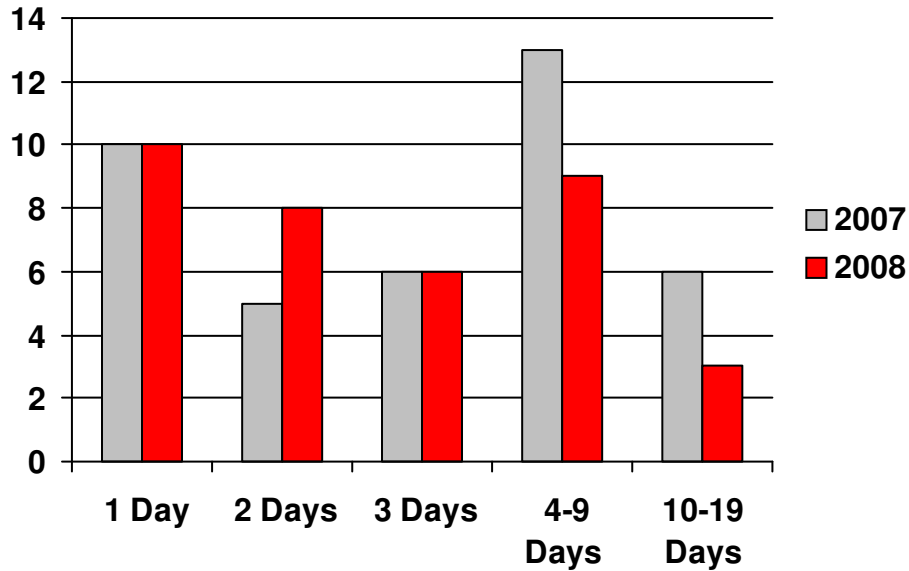


Trial Type	2007	2008	% Increase '07 to '08
Jury	38	42	10.5%
Non-Jury	15	8	-46.7%
Other *	10	23	130.0%
Sentencing Hearings	15	17	13.3%
Criminal Trial Totals	78	90	15.4%

NOTE: "Other" trials includes contested hearings on motions for preliminary injunctions, temporary restraining orders, evidence, or other matters not resulting in a final judgment or verdict. Data here are comparable to Table T-1 Criminal Trials information published by the AO.

Divisional Workload Statistics

Length of Civil Trials - Phoenix

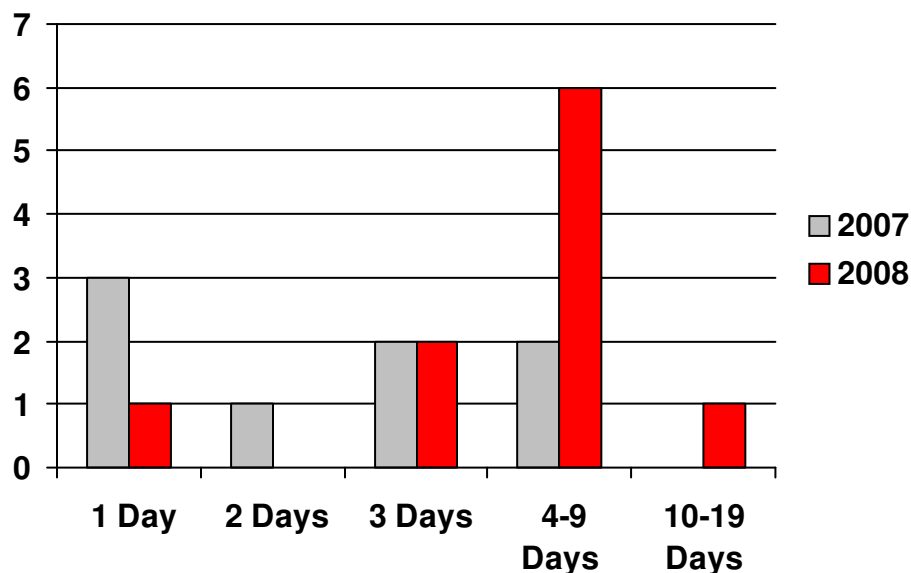


	2007	2008	% Increase '07 to '08
1 Day	10	10	0.0%
2 Days	5	8	60.0%
3 Days	6	6	0.0%
4-9 Days	13	9	-30.8%
10-19 Days	6	3	-50.0%
Total Trials	40	36	-10.0%

Note: includes trials conducted by district and appellate judges only. All trials conducted by magistrate judges are excluded. Excludes hearings on temporary restraining orders and Preliminary injunctions, hearings on contested motions, and other contested proceedings not resulting in a verdict or Judgment. Data here are comparable to Table T-2 Trial Lengths information published by the AO.

Divisional Workload Statistics

Length of Civil Trials - Tucson

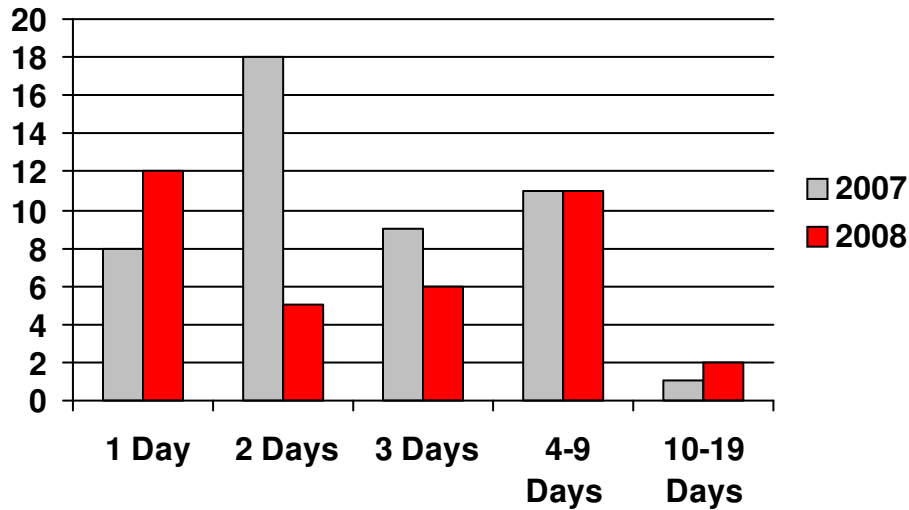


	2007	2008	% Increase '07 to '08
1 Day	3	1	-66.7%
2 Days	1		-100.0%
3 Days	2	2	0.0%
4-9 Days	2	6	200.0%
10-19 Days		1	100.0%
Total Trials	8	10	25.0%

Note: includes trials conducted by district and appellate judges only. All trials conducted by magistrate judges are excluded. Excludes hearings on temporary restraining orders and Preliminary injunctions, hearings on contested motions, and other contested proceedings not resulting in a verdict or Judgment. Data here are comparable to Table T-2 Trial Lengths information published by the AO.

Divisional Workload Statistics

Length of Criminal Trials - Phoenix

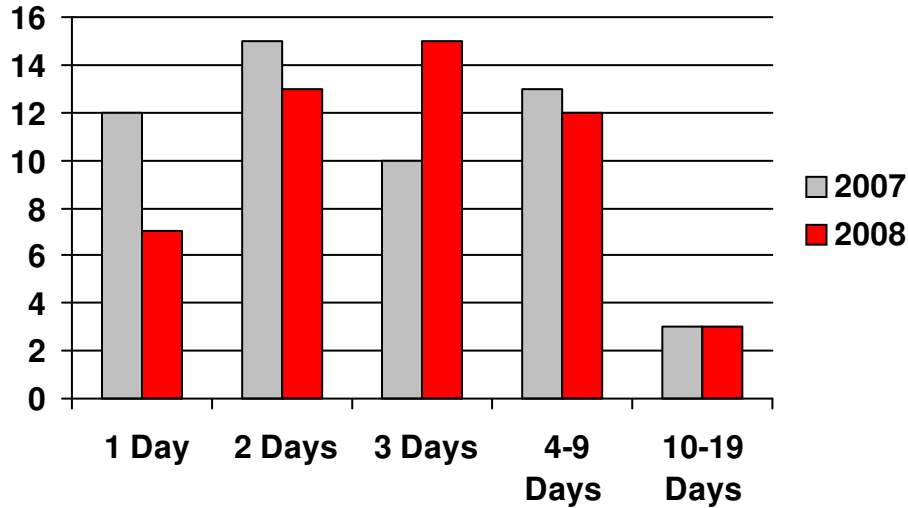


	2007	2008	% Increase '07 to '08
1 Day	8	12	50.0%
2 Days	18	5	-72.2%
3 Days	9	6	-33.3%
4-9 Days	11	11	0.0%
10-19 Days	1	2	100.0%
Total Trials	47	36	-23.4%

Note: includes trials conducted by district and appellate judges only. All trials conducted by magistrate judges are excluded. Excludes hearings on temporary restraining orders and Preliminary injunctions, supervised release proceedings, probation revocation proceedings, hearings on contested motions, and other contested proceedings not resulting in a verdict or Judgment. Data here are comparable to Table T-2 Trial Lengths information published by the AO.

Divisional Workload Statistics

Length of Criminal Trials - Tucson

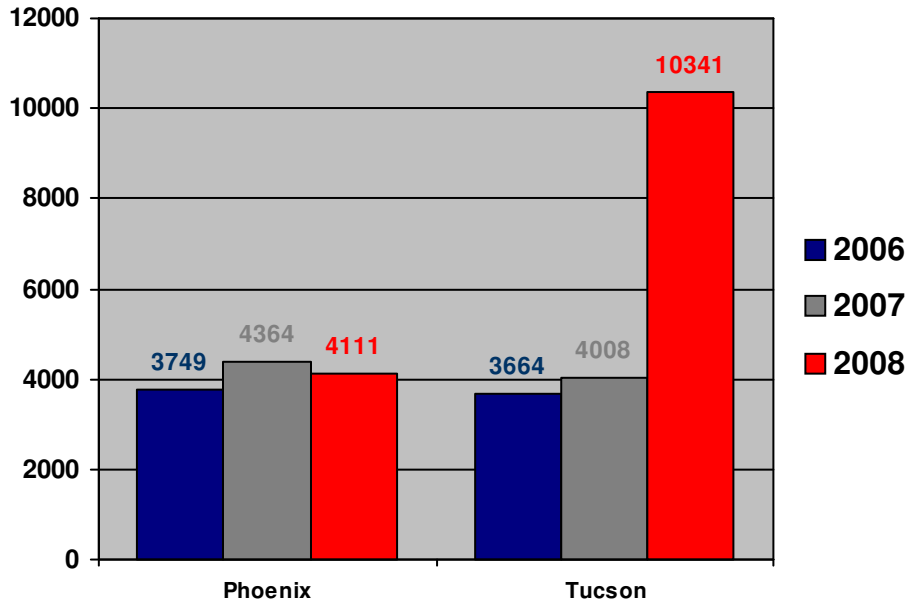


	2007	2008	% Increase '07 to '08
1 Day	12	7	-41.7%
2 Days	15	13	-13.3%
3 Days	10	15	50.0%
4-9 Days	13	12	-7.7%
10-19 Days	3	3	0.0%
Total Trials	53	50	-5.7%

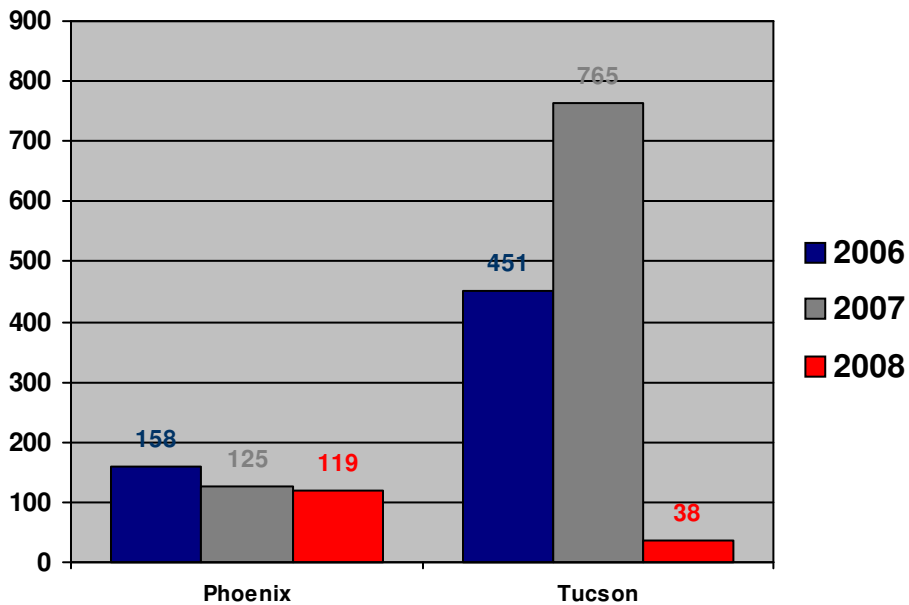
NOTE: "Other" trials includes contested hearings on motions for preliminary injunctions, temporary restraining orders, evidence, or other matters not resulting in a final judgment or verdict. Data here are comparable to Table T-1 Criminal Trials information published by the AO.

Divisional Workload Statistics

Magistrate Judge Petty Dispositions (includes CVB)



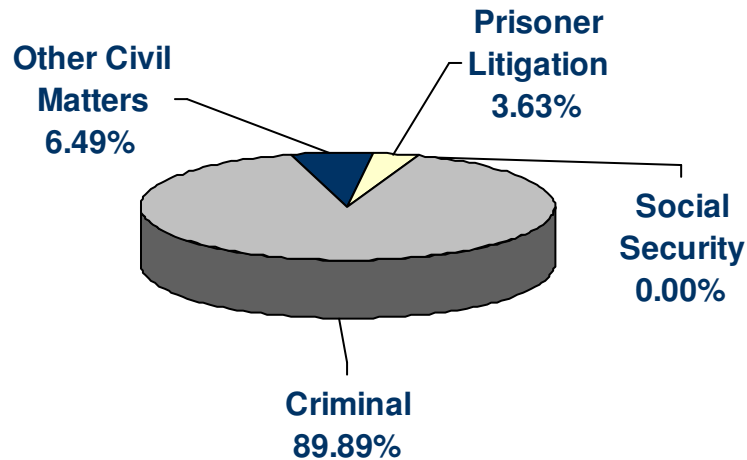
Magistrate Judge Misdemeanor Dispositions



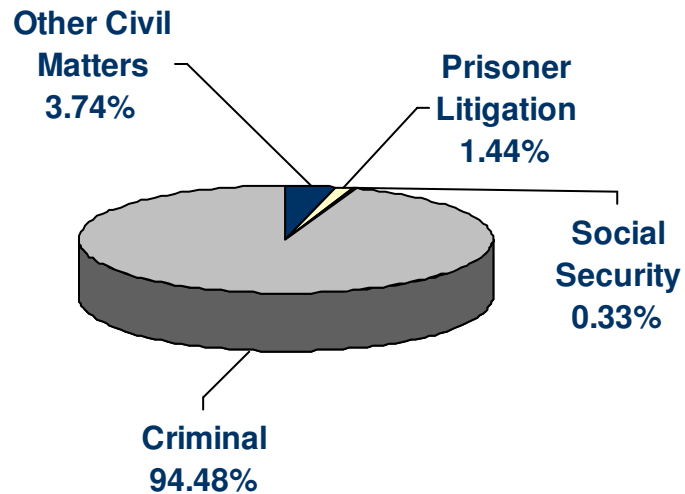
SOURCE: Magistrate Judge Workload Table FY 2006-2008, from the Administrative Office, Washington D.C

Divisional Workload Statistics

MJ DUTIES UNDER § 636(b) 2008 Phoenix Division



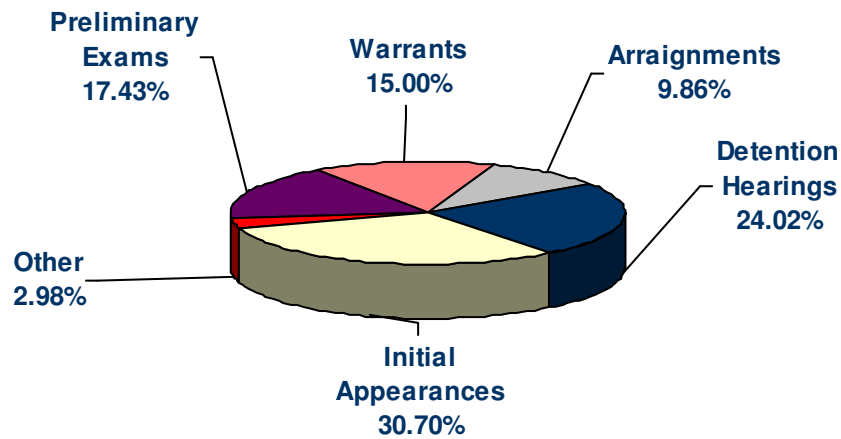
MJ DUTIES UNDER § 636(b) 2008 Tucson Division



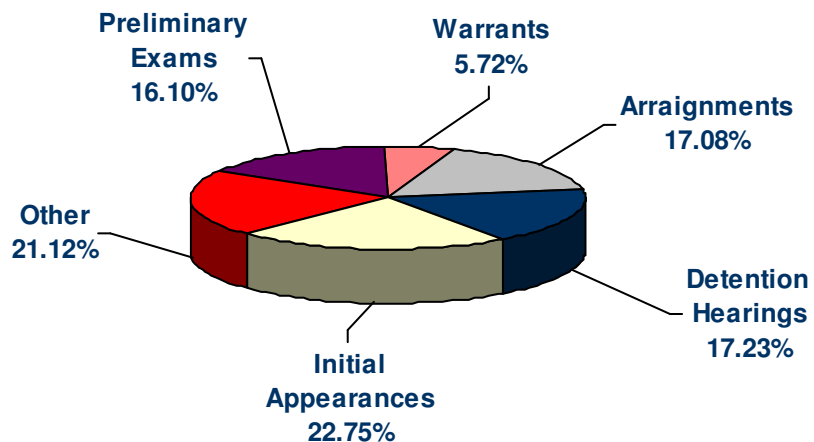
SOURCE: Magistrate Judge Workload Table FY 2008, from the Administrative Office, Washington D.C.
NOTE: Tucson Duties includes work associated with cases from Phoenix as well as Tucson.

Divisional Workload Statistics

MJ Preliminary Proceedings 2008 Phoenix Division



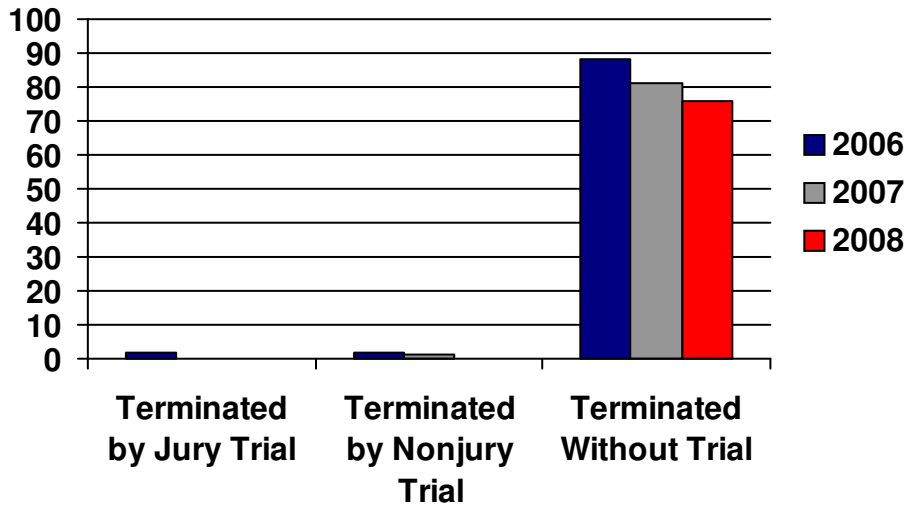
MJ Preliminary Proceedings 2008 Tucson Division



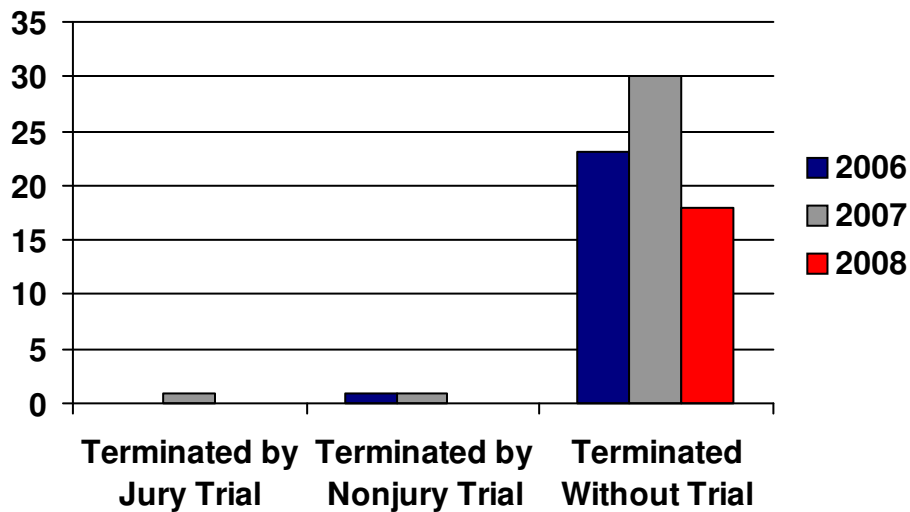
SOURCE: Magistrate Judge Workload Table FY 2008, from the Administrative Office, Washington D.C

Divisional Workload Statistics

MJ Consent Case Activity - Phoenix



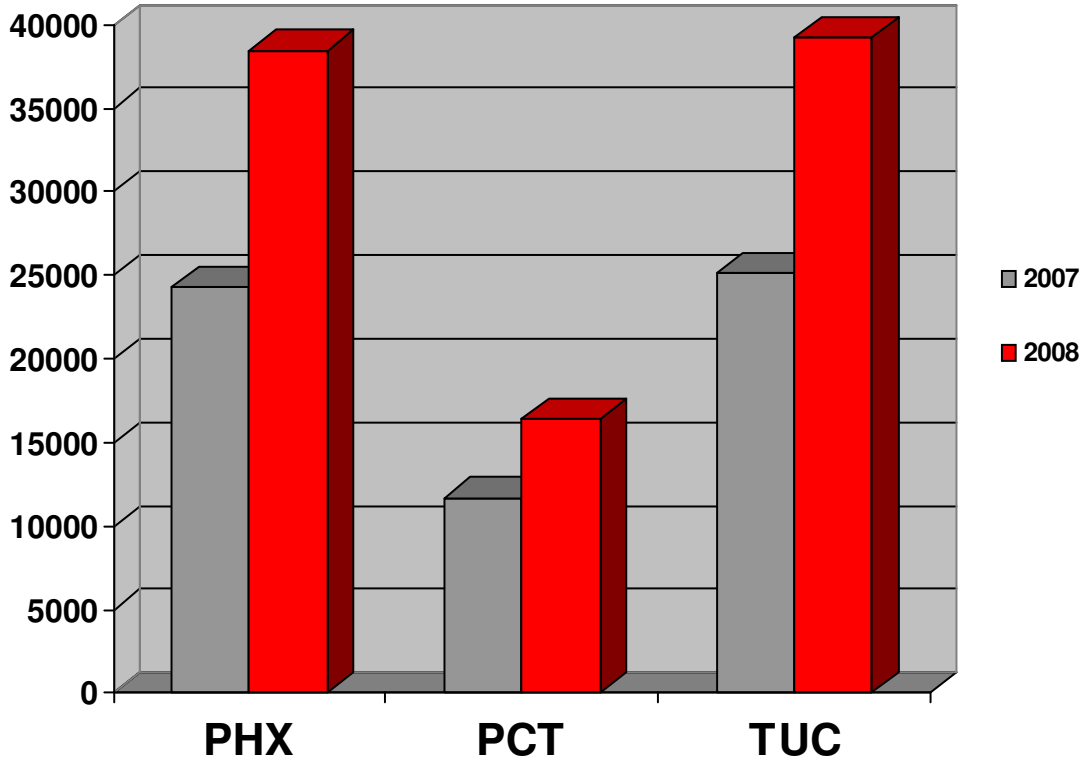
MJ Consent Case Activity - Tucson



SOURCE: Magistrate Judge Workload Table FY 2006-2008, from the Administrative Office, Washington D.C

Jury Services Statistics

DISTRICT JURORS SUMMONSED

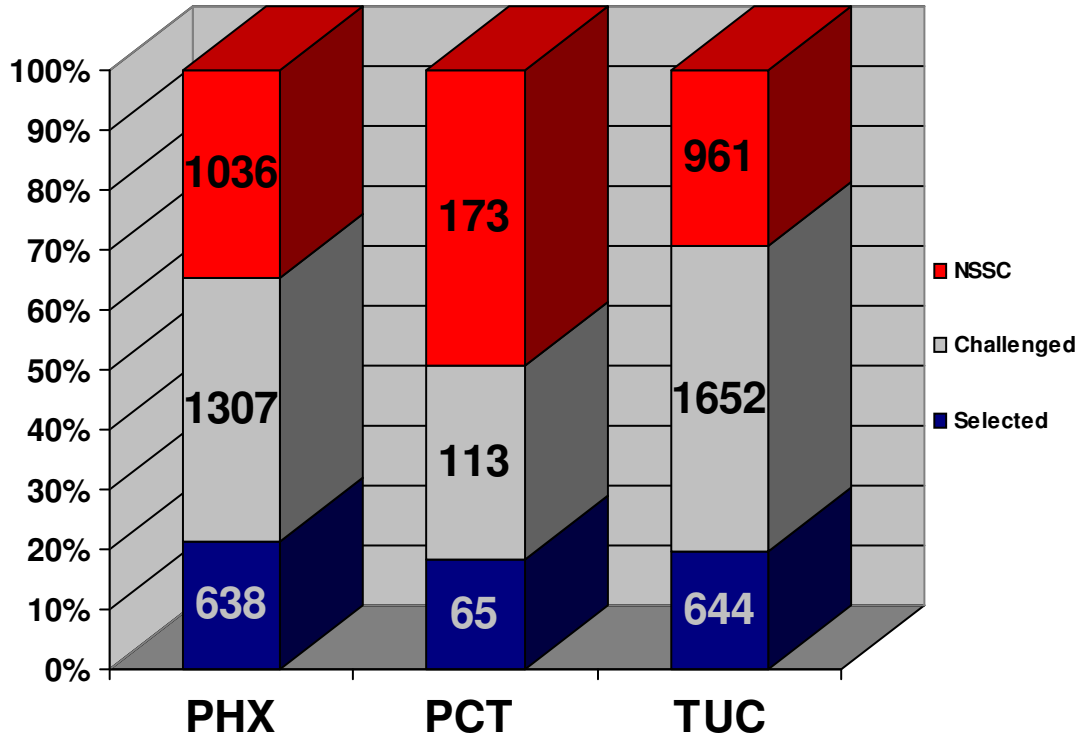


	2007	2008	% Change
PHX	24,314	38,459	58.2%
PCT	11,700	16,410	40.3%
TUC	25,155	39,194	55.8%
Total	61,169	94,063	53.8%

NOTE: The District's jury plan was amended in December 2007 to change the term of service for jurors from one month to one week/one appearance for Phoenix and Tucson and from two months to one month/one appearance for Prescott. This increased the number of jurors summoned.

Jury Services Statistics

DISTRICT JURY PANEL UTILIZATION FY 2008

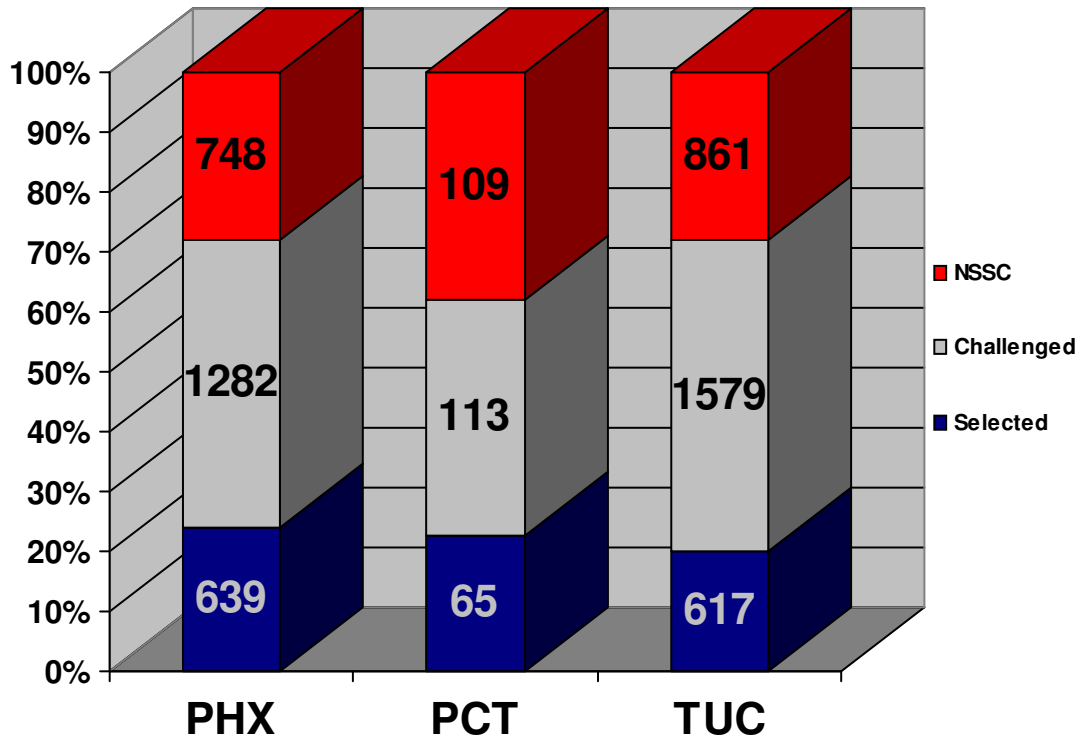


	Total Jurors	Selected	Challenged	NSSC
PHX	2,981	638	1,307	1,036
PCT	351	65	113	173
TUC	3,257	644	1,652	961
Total	6,589	1,347	3,072	2,170

NOTE: These numbers include all information submitted to the Administrative Office with regards to Jury Utilization.

Jury Services Statistics

DISTRICT JURY PANEL UTILIZATION ADJUSTED FIGURES* FY 2008



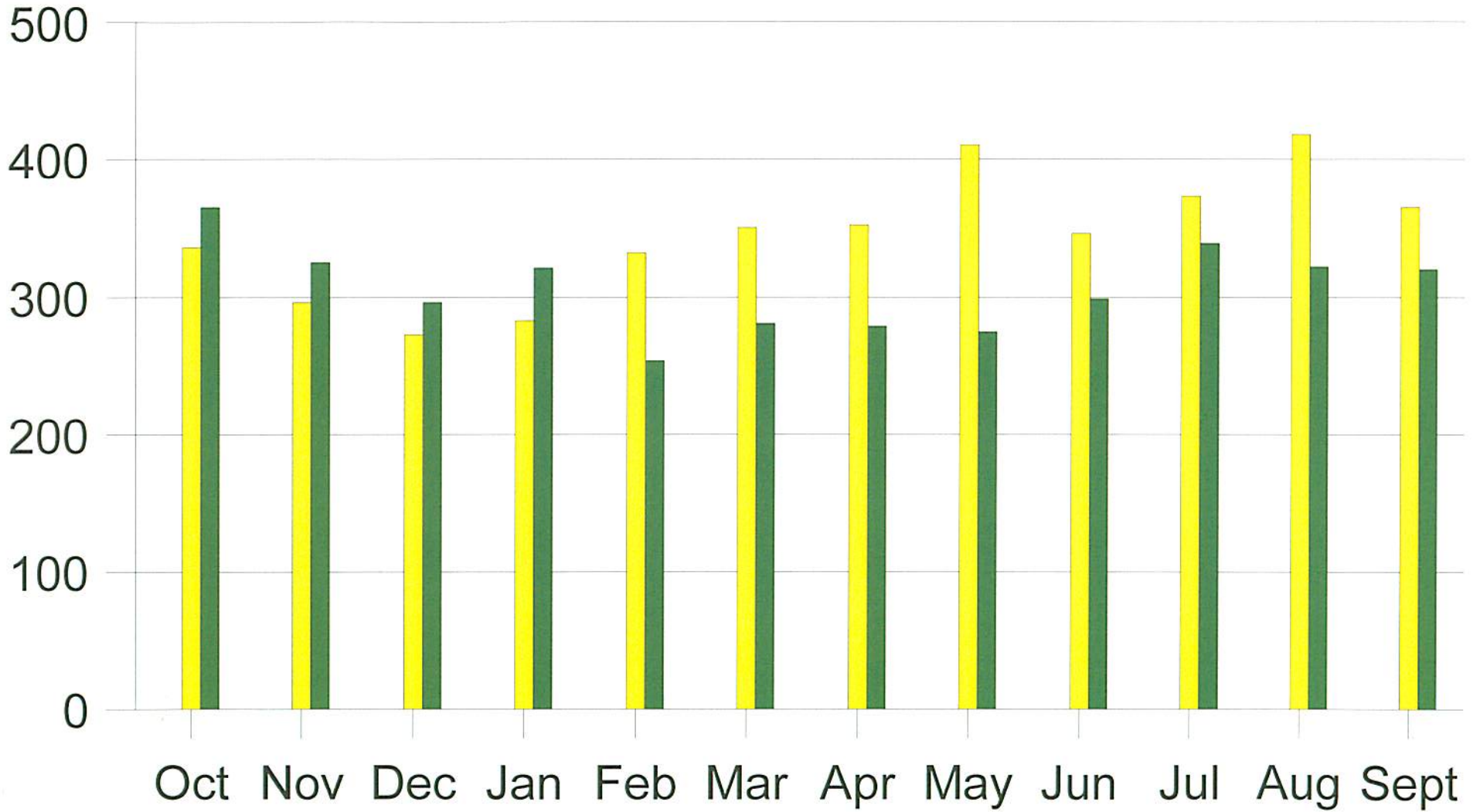
	Total Jurors	Selected	Challenged	NSSC
PHX	2,669	639	1,282	748
PCT	287	65	113	109
TUC	3,060	617	1,579	861
Total	6,016	1,321	2,974	1,718

NOTE: The purpose of this chart is to exclude trials that unavoidably but adversely impact utilization figures. Trials that plea/settle the day of jury selection or that take multiple days for voir dire are examples of such situations. By excluding the trials that plea/settle and combining multiple day jury selection into one day, a more realistic picture of utilization statistics emerges. Therefore, these totals are adjusted to exclude trials that plea the morning of jury selection and to treat multiple day selections as one day.



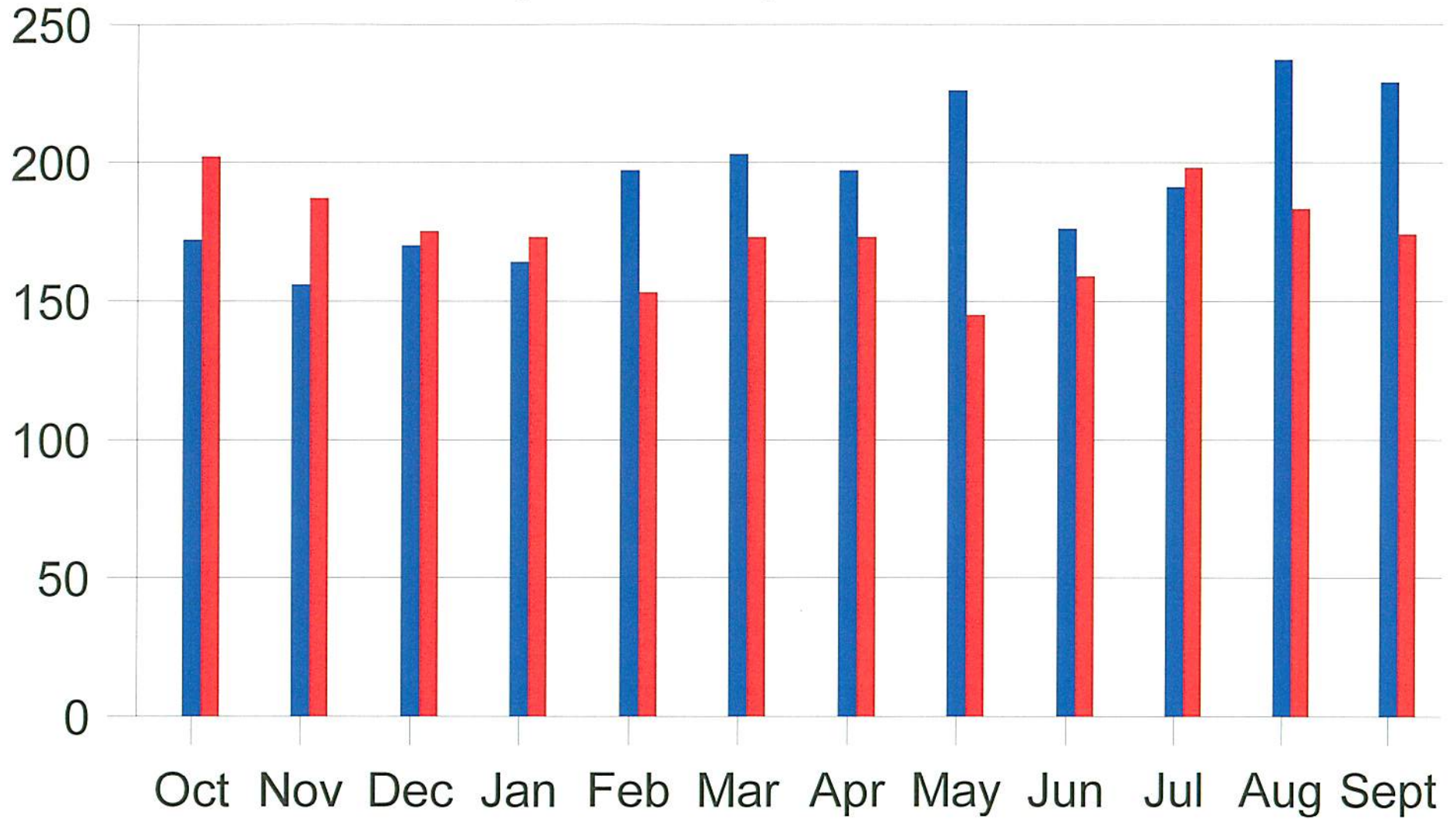
Workload Statistics

District of Arizona Presentence Report Completions



 FY 07 4134  FY 08 3676

Presentence Reports Completed in Tucson Division



FY 07

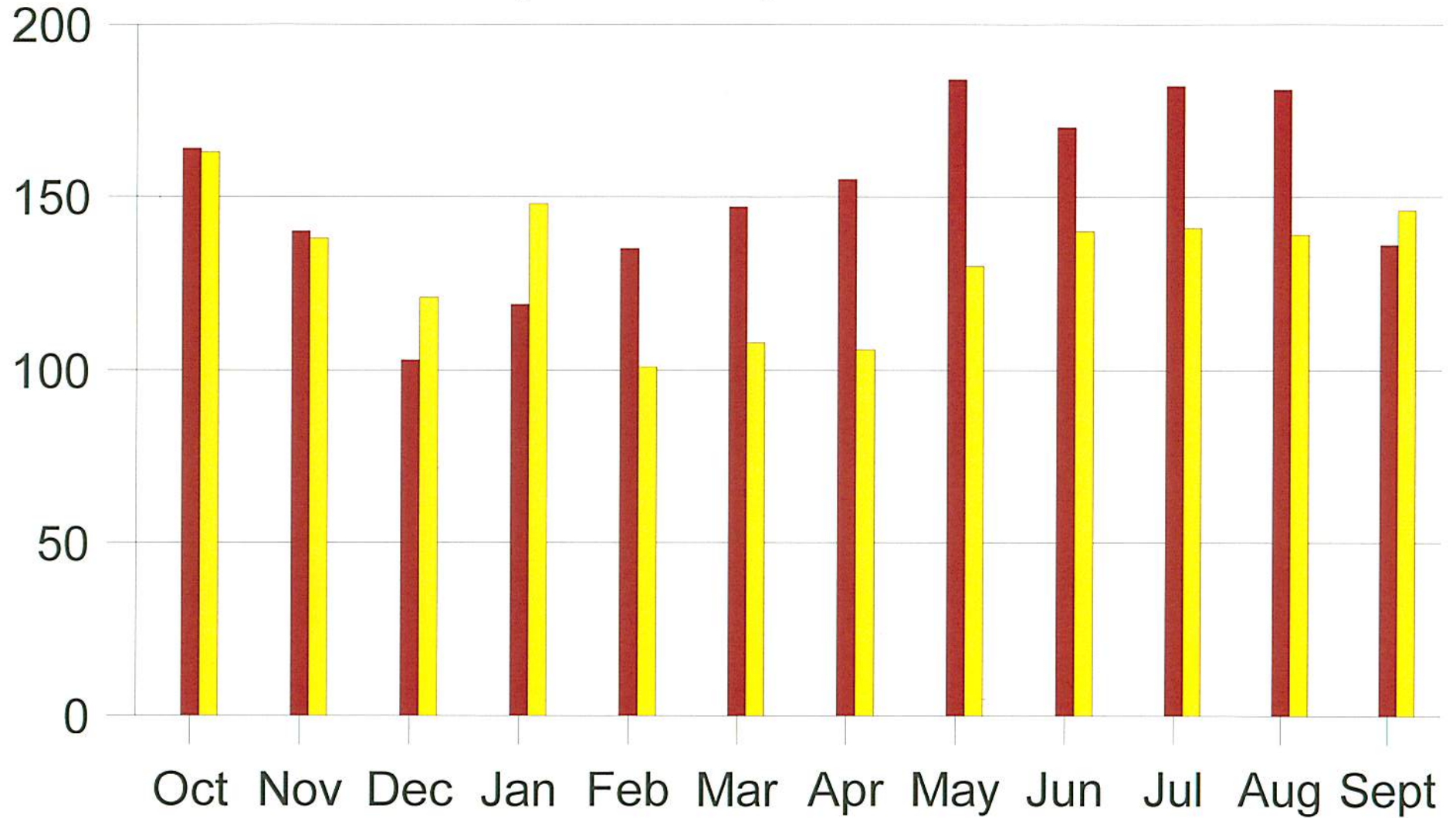
2318



FY 08

2095

Presentence Reports Completed in Phoenix Division



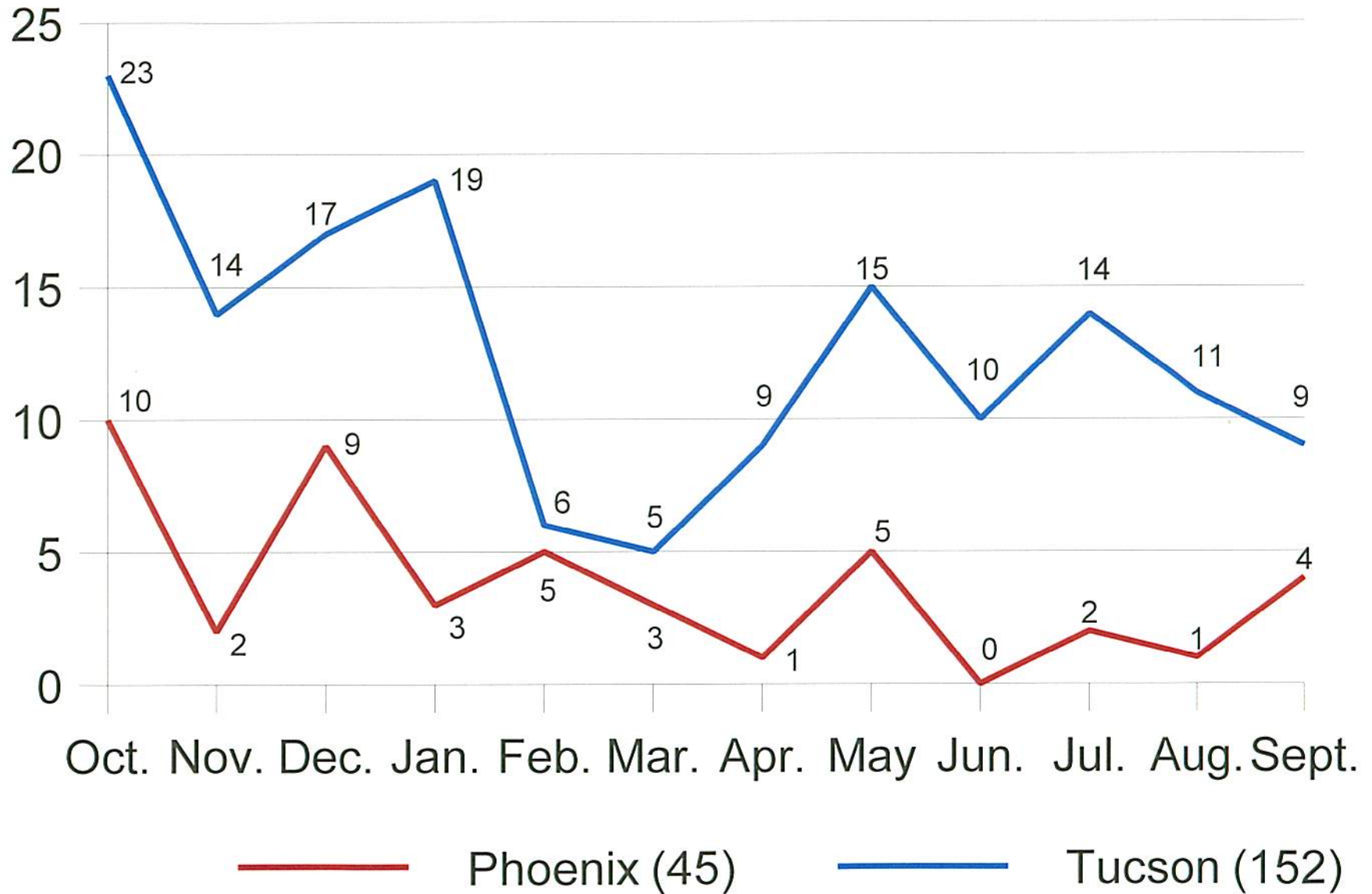
1816

FY 07

1581

FY 08

P.O. Requested Continuances FY 08



Supervision Workload for Fiscal Year 2008

Activated Cases

	1st Qtr	2nd Qtr	3rd Qtr	4th Qtr	Total
Flagstaff	41	47	46	62	196
Phoenix	208	209	211	216	844
Sierra Vista	16	21	26	22	85
Tucson	149	187	195	154	685
Yuma	24	21	21	22	88
Total	438	485	499	476	1898

Supervision Workload for Fiscal Year 2008

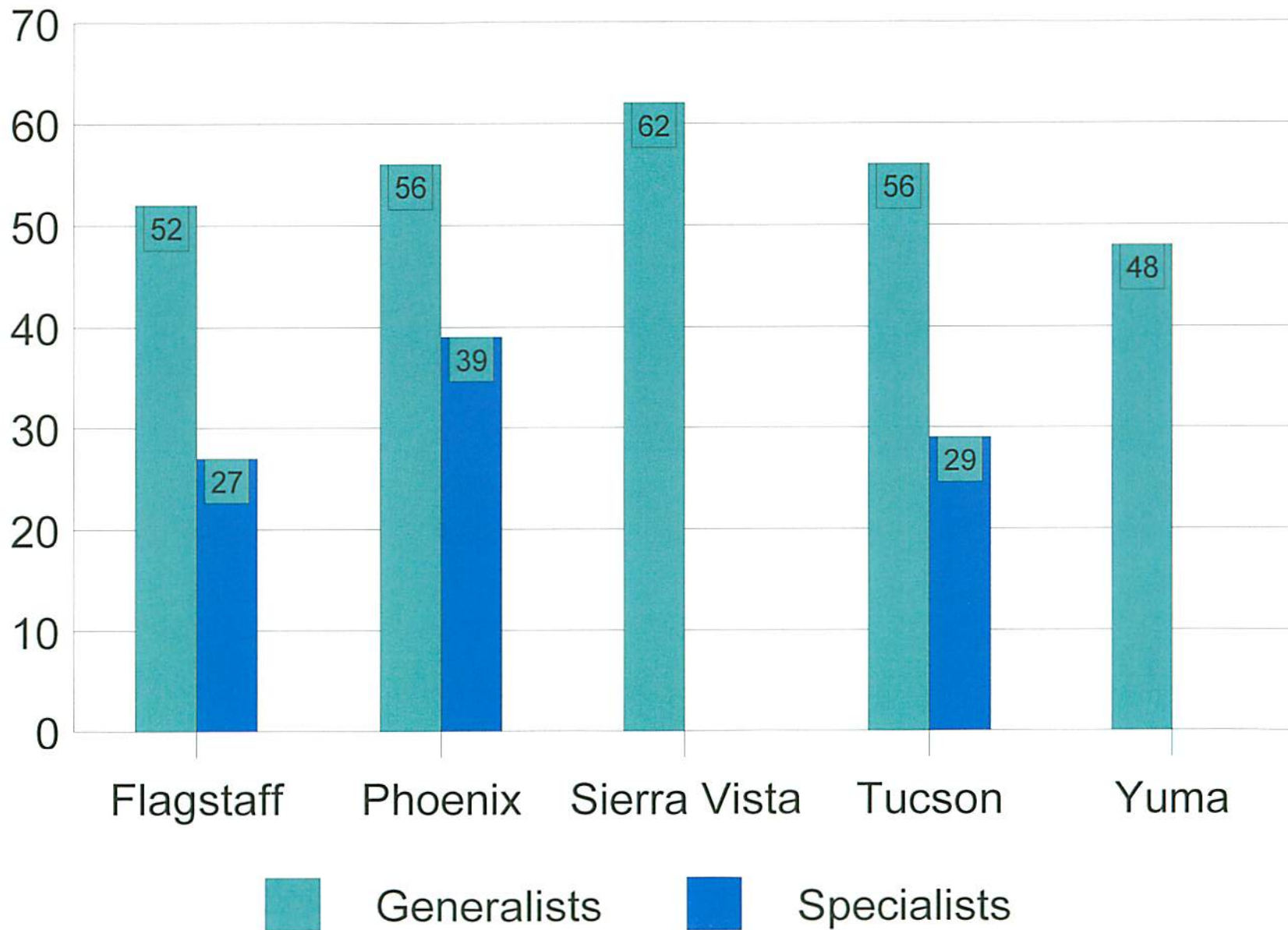
Closed Cases

	Early Terminati>	Expire Successf>	Revoked	Total
Flagstaff	12	67	81	160
Phoenix	155	282	259	696
Sierra Vista	18	25	32	75
Tucson	118	189	289	596
Yuma	18	29	14	61
Total	321	592	675	1588

District's Supervision Caseload 2008

October 2007	3150
October 2008	<u>3167</u>
Net Increase	17

Average Caseload per Office for Fiscal Year 2008



APPENDIX A - Nature of Suit Codes Used in Civil Litigation Categories

SOCIAL SECURITY

861 HIA (42 USC § 1395ff(b))
862 Black Lung (30 USC § 923)
863 DIWC (42 USC § 405(g))
864 SSID Title XVI
865 RSI (42 USC § 405(g))

PERSONAL

INJURY/PROPERTY

LIABILITY

315 Airplane product liability
345 Marine - product liability
355 Motor vehicle - product liability
365 Personal injury - product liability
368 Asbestos personal injury – product liability

PRISONER PETITIONS

463 Habeas Corpus – Alien Detainee
510 Vacate Sentence (28 USC § 2255)
530 Habeas Corpus
535 Habeas Corpus – Death Penalty
540 Mandamus and other
550 Prisoner - Civil Rights
555 Prisoner – Prison Condition

FORFEITURE AND PENALTY

610 Agriculture Acts
620 Food and Drug Acts
630 Liquor Laws
640 Railroad and trucks
650 airline regulations
660 Occupational safety/health
690 Other forfeiture and penalty suits
870 Tax Suits
871 IRS - Third Party Suits (26 USC § 7609))

REAL PROPERTY

210 Land Condemnation
220 Foreclosure
230 Rent, lease, ejectment
240 Torts to land
245 Tort - product liability
290 Other real property actions

COPYRIGHT, PATENT AND TRADEMARK

820 Copyright
830 Patent
840 Trademark

LABOR LAWS

710 Fair Labor Standards Act
720 Labor/Management Relations Act
730 Labor/Management Reporting and Disclosure Act
740 Railway Labor Act
790 Other labor litigation
791 Employee retirement Income Security Act Of 1974

CONTRACT

110 Insurance
120 Marine
130 Miller Act
140 Negotiable instruments
150 Recovery of overpayments and enforcement of judgment
151 Recovery of overpayments under the Medicare Act
152 Recovery of defaulted student loans
153 Recovery of overpayment of veterans benefits
160 Stockholders suits
190 Other contract actions
195 Contract product liability

TORTS - PERSONAL

PROPERTY DAMAGE

310 Airplane
320 Assault, libel and slander
330 Federal Employers' liability
340 Marine
350 Motor vehicle
360 Other personal injury
362 Personal injury - medical malpractice
370 Other Fraud
371 Truth in Lending
380 Other personal property damage
385 Property damage - product liability

CIVIL RIGHTS

440 Other Civil Rights
441 Voting
442 Jobs
443 Accommodations
444 Welfare
445 Amer. W/Disabilities - Employment
446 Amer. w/Disabilities - Other

ANTITRUST

410 Antitrust

OTHER STATUTES

400 State re-apportionment
422 Bankruptcy Appeals Rule 801
423 Withdrawal
430 Banks and Banking
450 Interstate Commerce
460 Deportation
462 Naturalization, Pet For Hearing of Denial
465 Other Immigration Actions
470 Racketeer Influenced and Corrupt Organization (Eff. 11/15/85)
480 Consumer Credit
490 Cable Satellite/TV
810 Selective Service
850 Securities, Commodities, Exchange
875 Customer Challenge (12 USC § 3410)
890 Other Statutory Actions
891 Agricultural Acts
892 Economic Stabilization Act
893 Environmental Matters
894 Energy Allocation Act
895 Freedom of Information Act of 1974
900 Appeal of Fee Determination Under Equal Access to Justice Act
950 Constitutionality of state statutes
990 Other

APPENDIX B – Offense Types Used in Criminal Categories

MARIJUANA

Sell, distribute, or dispense 6501
Import/export 6502
Manufacture 6503
Possession 6504

ALL OTHER DRUGS

Sell, distribute, or dispense 6701, 6801
Import/export 6702, 6802
Manufacture 6703, 6803
Possession 6704, 6804
Other drug offenses 6500, 6505, 6600, 6700, 6705, 6706, 6707, 6800, 6805, 6806, 6807, 6808, 6809, 6810, 6900, 6905, 6907, 6909, 6911

IMMIGRATION

Alien smuggling 8730
Improper entry by alien 8710
Improper reentry by alien 8720
Fraud and misuse of visa/permits 8731
Other immigration offenses 8740, 8750

FIREARMS AND EXPLOSIVES

Possession by prohibited persons 7800, 7820
Furtherance of violent/drug trafficking crimes 7831
Other firearm offenses 7830
Explosives 9994

FRAUD

Tax 4510, 4520, 4530, 4540, 4931, 4932, 4933, 8901
Financial institutions 4600, 4601
Securities and exchange 4910, 4920
Mail 8500
Wire, radio or television 8600
Bankruptcy 4900
Social security 4950
False impersonation 4960
Citizenship and naturalization 4970
Passport 4980
Identification documents & information 8201
False claims and services, government 8200
False statements 4991
Conspiracy to defraud the United States 4992, 4993
Unauthorized access devices 4995
Computer 4996
Health care 4998
Attempt and conspiracy to defraud 4700
Other fraud offenses 4800, 4940, 4941, 4994, 4997, 4999, 7331, 9915, 9916

VIOLENT OFFENSES

Homicide 0100, 0101, 0200, 0201, 0300, 0301, 0310, 0311
Robbery bank 1100
Other robbery offenses 1200, 1400
Assault 1500, 1501, 1560, 1600, 1601, 1602
Kidnapping 7600, 7601, 7610, 7611
Racketeering-violent crime 1700, 7410, 7478
Carjacking 1800
Terrorism 9957
Other violent offenses 6120, 6121

SEX OFFENSES

Sexual abuse of adults 6100
Sexual abuse of minors 6110
Sexually explicit material 5900
Transportation for illegal sexual activity 6301
Sex offender registry 6400
Other sex offenses 6200, 6300

FORGERY AND COUNTERFEITING

Forgery and counterfeiting 5500, 5600, 5710, 5720, 5800

LARCENY AND THEFT

Bank 3100
Postal 3200
Interstate shipments 3300
Theft, U.S. property 3400
Theft, maritime jurisdiction 3500
Transportation, etc., stolen property 3600
Other larceny and theft offenses 3700, 3800

JUSTICE SYSTEM OFFENSES

Aiding, abetting, accessory, etc 7320
Obstruction of justice 9992
Escape from custody 7310, 7313
Failure to appear 7311, 7312
Perjury 7700
Contempt 9921, 9922

REGULATORY OFFENSES

Civil rights 9901, 9902, 9954
Copyright 9912
Food and drug 9400
Hazardous waste-treatment, disposal, storage 9001
Telegraph, telephone, and radiograph 9910, 9911, 9947
National defense 9710, 9720, 9730, 9740, 9741, 9751, 9752, 9753, 9754, 9755, 9770, 9780, 9790, 9791, 9793, 9905, 9950
Antitrust 9200
Labor 9300, 9929, 9952
Game & conservation 9130, 9920
National parks/recreation 9150, 9990

ALL OTHER CRIMINAL FELONY CASES

Burglary 2100, 2200, 2300, 2400
Bank embezzlement 4100
Postal service embezzlement 4200
Financial institutions embezzlement 4320, 4330
Other embezzlement offenses 4310, 4340, 4350, 4390
Auto theft 5100, 5200
Bribery 7100
Money laundering 7477
RICO 7480
Racketeering general 7471, 7473
Extortion, and threats 7400, 7401, 7420, 7430, 7440, 7450, 7460, 7470, 7472, 7474, 7475, 7481, 7482, 7490
Gambling and lottery 7500, 7520, 7530
Failure to pay child support 8100
Other general offenses 7130, 7131, 7314, 7330, 7910, 7920, 7930, 7950, 7961, 7962, 7990, 7991, 9115, 9760, 9792, 9810, 9820, 9940, 9941, 9942
Other property offenses 7940, 7941, 9923, 9944, 9991, 9996