

## eVoucher Web Browser Information

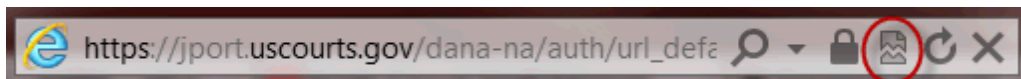
### Accessing the CJA eVoucher Program

In order for eVoucher to function properly, you must use Internet Explorer, version 8 or higher (refer to the Help item on the IE menu bar to determine which version of Internet Explorer you are currently using). You may also use Safari on an Apple device. If you are using IE 10 or 11, you will need to set your browser to “compatibility mode.”

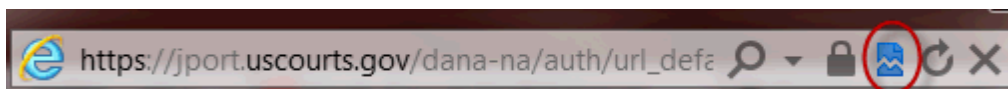
### IE10:

In IE 10 turn on "compatibility mode" by clicking on what looks like a torn piece of paper after the web address. If compatibility mode is on (as it should be for eVoucher to work properly) the icon will be blue:

Compatibility mode Off:

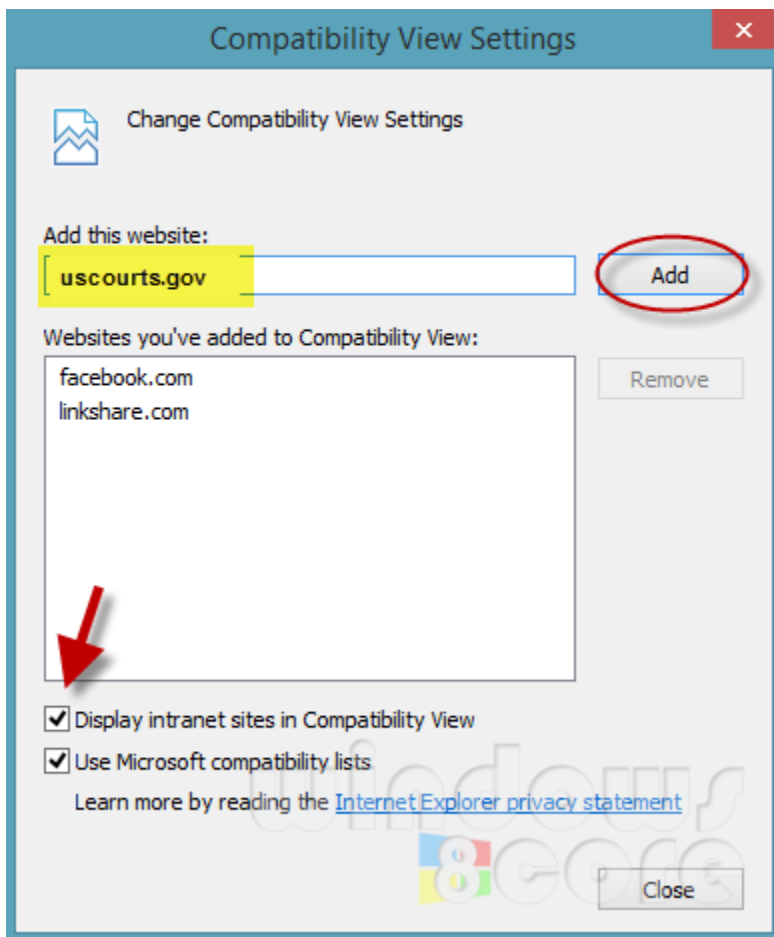


Compatibility mode On:



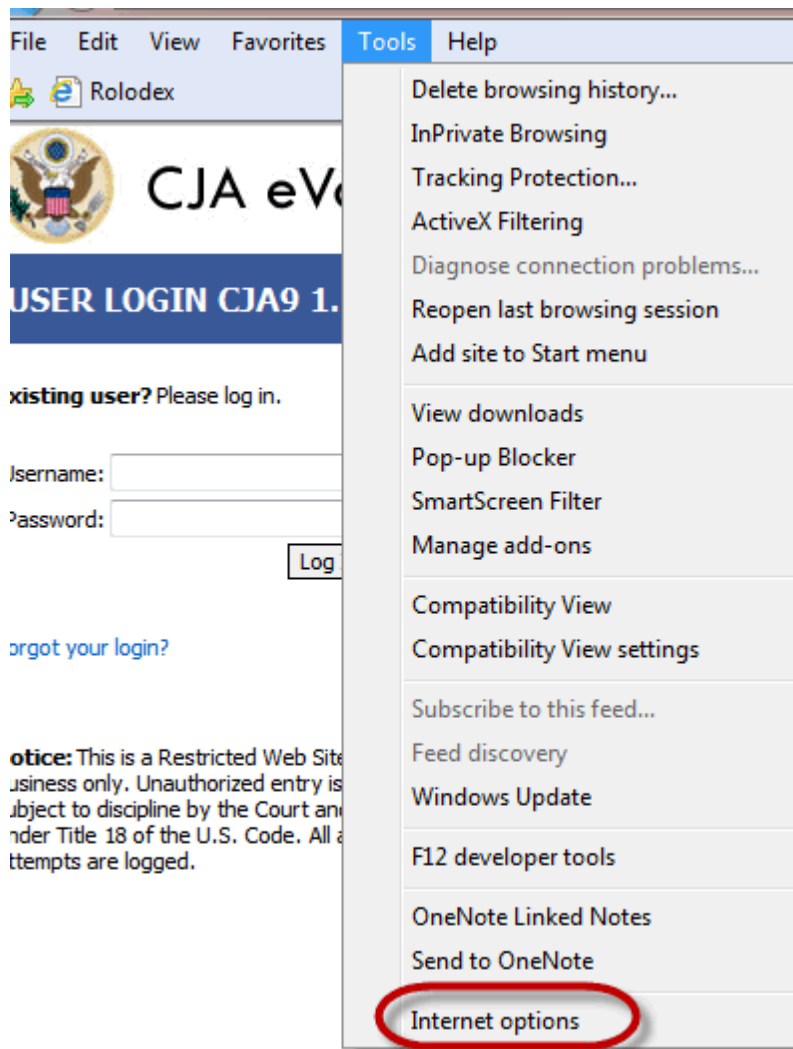
## IE 11:

1. In Internet Explorer, go to the eVoucher website.
2. Click Tools on the menu bar (if you can't see the menu bar, there should be a "cog" icon in the upper right corner of the browser -- click on that to get the menu bar)
3. Scroll down to Compatibility View Settings. The website you are currently viewing should pop up, but it might just say uscourts.gov (which is correct).
4. Click the Add button and it should add "uscourts.gov" in the area below.
5. Make sure the two check boxes below that are checked.

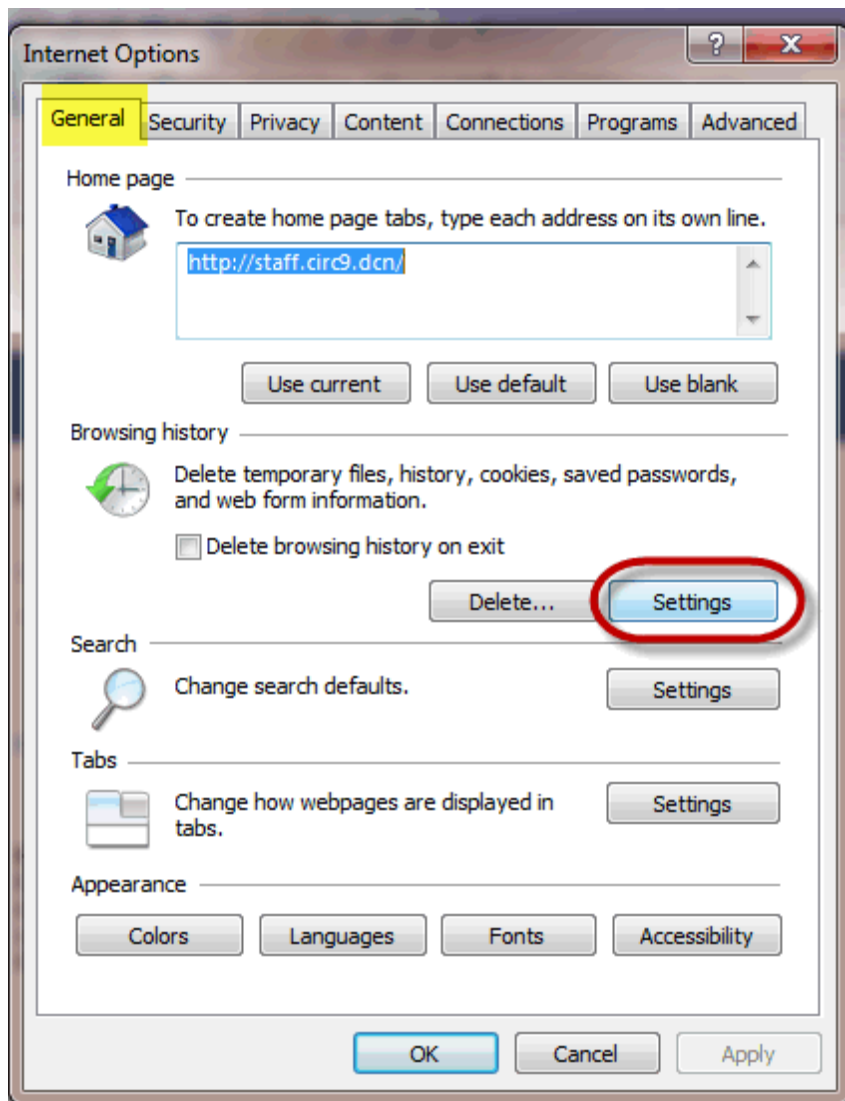


To insure against data loss, you should also set your cache settings as indicated here:

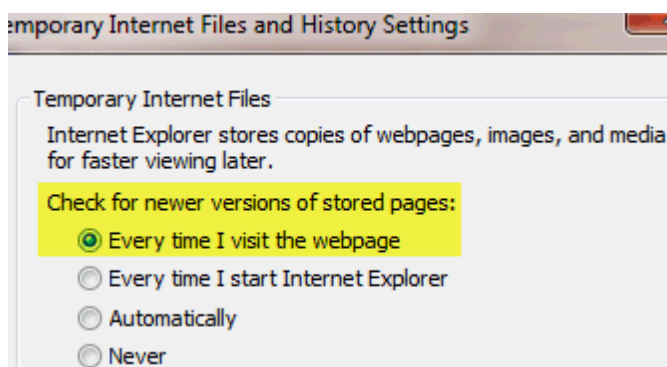
**1. Go to TOOLS on your browser menu bar and click on "Internet Options"**



## 2. From the General tab, click on Settings

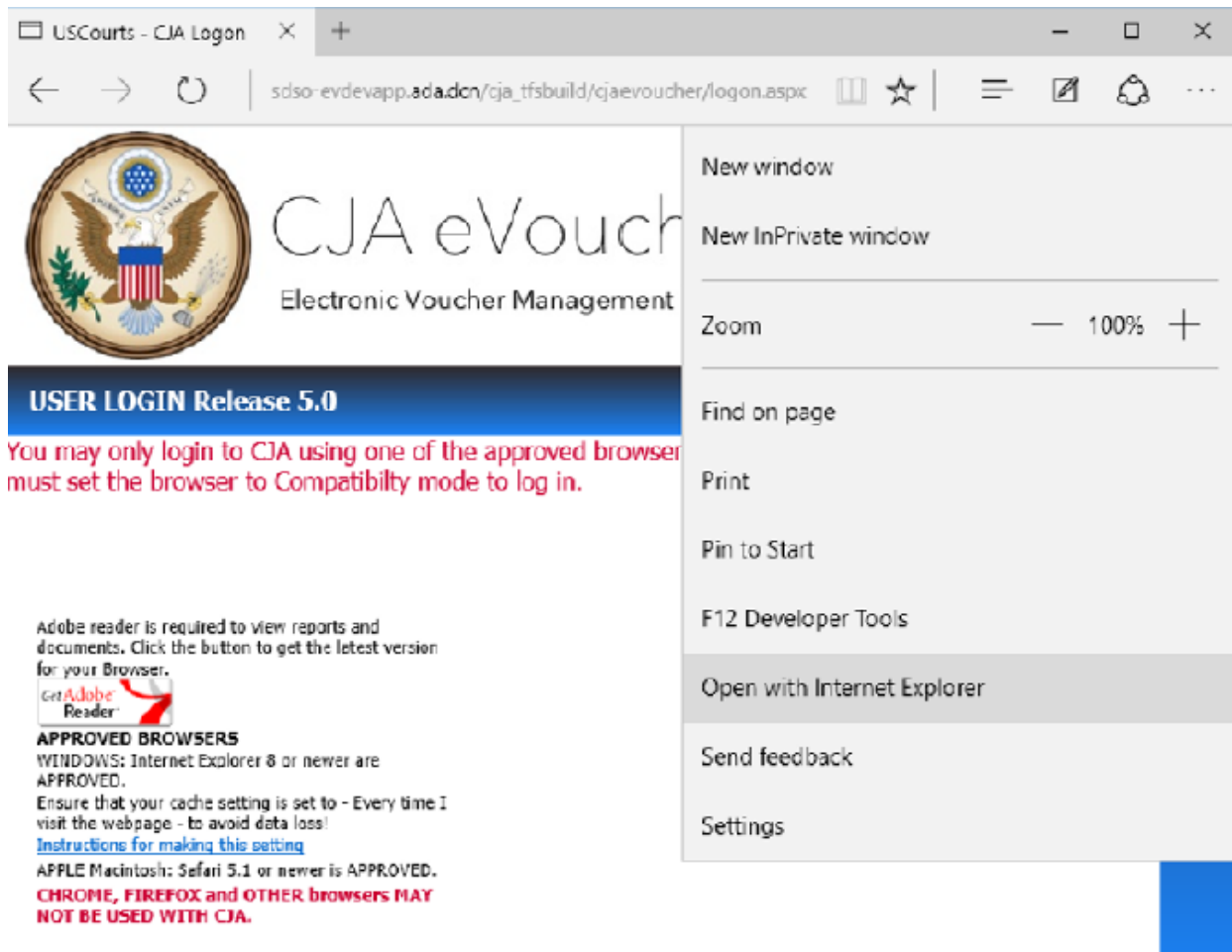


## 3. Choose this option:



## eVoucher and WINDOWS 10 Compatibility

eVoucher is not compatible with Edge Browser. Edge has an option to open the site in IE built in.



### RECOMMENDATION:

Internet Explorer 11 is included in Windows 10, but it is not the default browser. Here is the fastest way to find IE 11 in Windows 10:

Click the Windows button and type Internet Explorer in the Start Menu. IE11 will appear as an item to be selected.

-or-

Got to Start Menu> All Apps>Windows Accessories>Internet Explorer.