

*2008-2009
District of Arizona
Annual Report of Statistics*



*Published by
Office of the Clerk of Court
For the District of Arizona*

February 28, 2010

The 2009 District of Arizona Annual Statistics Report is published by the Clerk of Court and represents data from the most recent fiscal year (October 1, 2008 to September 30, 2009) and, when available, historical data for comparison. The findings highlight caseload indicators in both criminal and civil areas, workload statistics, and other statistical information from the district's Probation and Jury Services Offices.

Statistical reports include:

District Specific Statistics

Caseload Statistics

- Civil Case Filings Page 5
- Civil Case Filings – Weighted Page 6
- Civil Case Filings – Major Case Type Page 7
- Civil Case Terminations Page 8
- Civil Case Terminations – Weighted Page 9
- Civil Case Terminations – Major Case Type Page 10
- Criminal Case Filings Page 11
- Criminal Case Terminations Page 12
- Criminal Defendant Filings Page 13
- Criminal Defendant Filings – Weighted Page 14
- Criminal Defendant Filings – Major Type of Offense Page 15
- Criminal Defendant Terminations Page 16
- Criminal Defendant Terminations – Weighted Page 17
- Criminal Defendant Terminations – Major Type of Offense Page 18

Workload Statistics

- District Judge Time in Court (Yearly Total for All Judges) Page 19
- District Judge Time in Court (Average Hours Per Judge) Page 19
- Magistrate Judge Time in Court (Criminal Hours – All Judges) .. Page 20
- Magistrate Judge Time in Court (Civil Hours – All Judges) Page 20
- Magistrate Judge Time in Court (Criminal Hrs – Avg Per Judge) . Page 21
- Magistrate Judge Time in Court (Civil Hours – Avg Per Judge) Page 21
- District Judge Civil Trial Information Page 22
- District Judge Criminal Trial Information Page 23
- District Judge Civil Trial Length Page 24
- District Judge Criminal Trial Length Page 25
- Petty Dispositions Page 26
- Misdemeanor Dispositions Page 26
- Petty Dispositions By Type..... Page 27
- Misdemeanor Dispositions By Type..... Page 27
- Magistrate Judge Workload - Preliminary Proceedings FY 08/09 Page 28
- Magistrate Judge Workload - Duties Under § 636(b) FY 08/09 .. Page 29

- Magistrate Judge Workload - Consent Case Activity Page 30

Division Specific Statistics

Caseload Statistics

- Civil Case Filings Page 32
- Civil Case Filings – Weighted Page 33
- Civil Case Filings – Major Case Type – Phoenix / Tucson Page 34
- Civil Case Terminations Page 35
- Civil Case Terminations – Weighted Page 36
- Civil Case Terminations – Major Case Type – Phoenix / Tucson . Page 37
- Criminal Case Filings Page 38
- Criminal Case Terminations Page 39
- Criminal Defendant Filings Page 40
- Criminal Defendant Filings – Weighted Page 41
- Criminal Defendant Filings – Major Type of Offense Page 42
- Criminal Defendant Terminations Page 43
- Criminal Defendant Terminations – Weighted Page 44
- Criminal Defendant Terminations – Major Type of Offense Page 45

Workload Statistics

- District Judge Time in Court (Yearly Total for All Judges) Page 46
- District Judge Time in Court (Average Hours Per Judge) Page 46
- Magistrate Judge Time in Court (Criminal Hours – All Judges) .. Page 47
- Magistrate Judge Time in Court (Civil Hours – All Judges) Page 47
- Magistrate Judge Time in Court (Criminal Hrs – Avg Per Judge) . Page 48
- Magistrate Judge Time in Court (Civil Hours – Avg Per Judge) Page 48
- District Judge Civil Trial Information – Phoenix/Tucson Page 49
- District Judge Criminal Trial Information – Phoenix/Tucson Page 51
- District Judge Civil Trial Length – Phoenix/Tucson Page 53
- District Judge Criminal Trial Length – Phoenix/Tucson Page 55
- Petty Dispositions Page 57
- Misdemeanor Dispositions Page 57
- Petty Dispositions By Type..... Page 58
- Misdemeanor Dispositions By Type..... Page 59
- Magistrate Judge Workload - Preliminary Proceedings FY 08/09 Page 60
- Magistrate Judge Workload - Duties Under § 636(b) FY 08/09 .. Page 62
- Magistrate Judge Workload - Consent Case Activity Page 64

Jury Services Statistics

- District Jury Utilization Submitted to the AO FY 2009 Page 66

- District Jury Utilization Adjusted for DAZ FY 2009 Page 67
- District Naturalizations/Name Changes Page 68

Probation Statistics

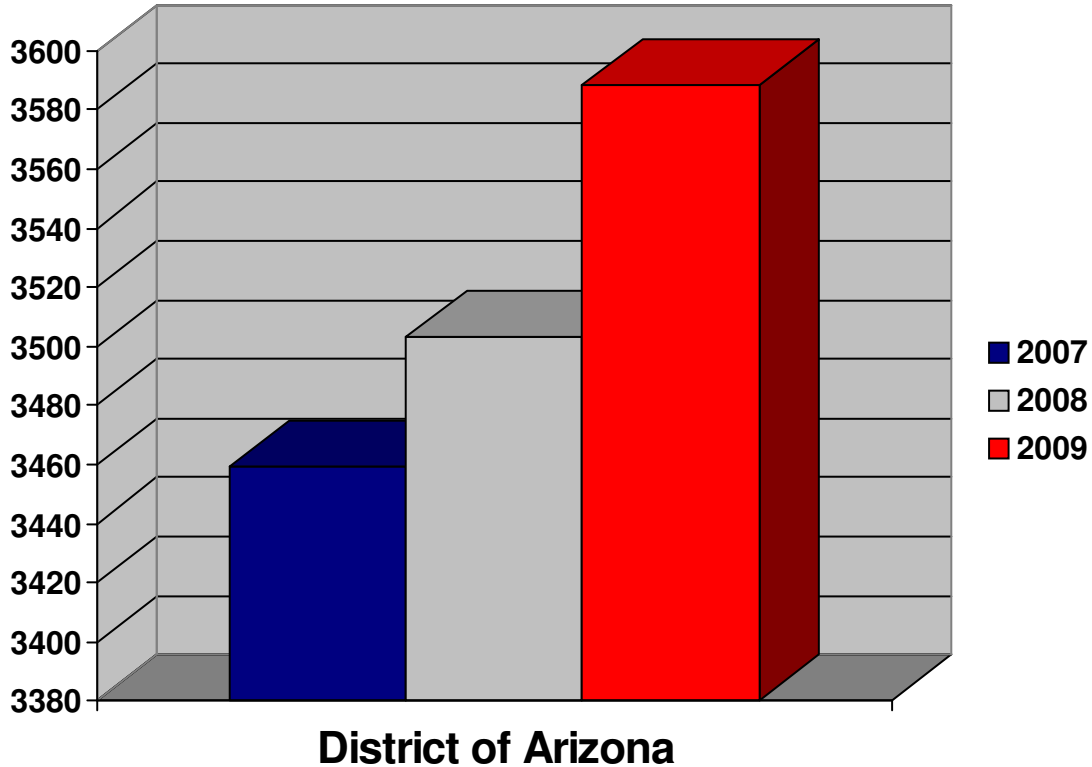
- Presentence Report Completions Page 70
- Presentence Report Completions – Phoenix Page 71
- Presentence Report Completions – Tucson Page 72
- Presentence Reports Completed – FY04 to FY09 Page 73
- District’s Supervision Caseload 2009 Page 74
- Supervision Workload for Fiscal Year 09 – Activated Cases Page 75
- Average Caseload per Office for Fiscal Year 2009 Page 76
- Successful Terminations Fiscal Year 2009 Page 77
- Revocation by Type Fiscal Year 2009 Page 78

Appendices

- A – Nature of Suit Codes Used in Civil Litigation Page 79
- B – Offense Types Used in Criminal Categories Page 80

District Caseload Statistics

Civil Filed Cases

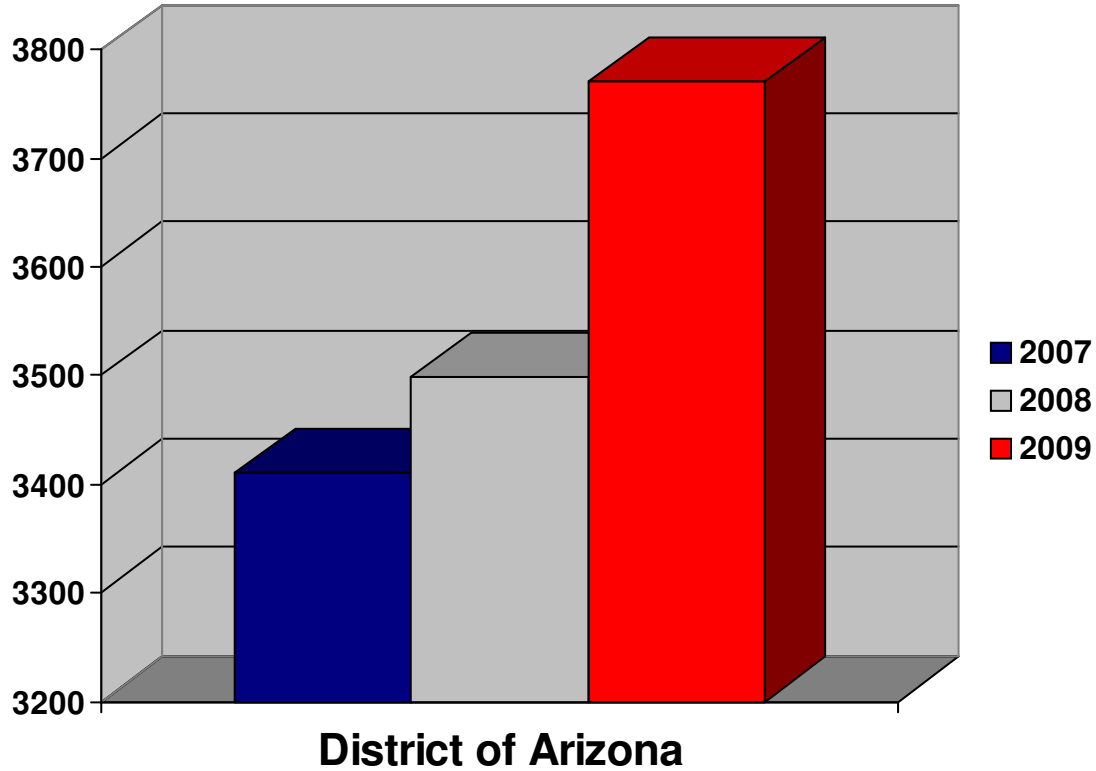


	FY2007	FY2008	FY2009	% Increase '08 to '09
Civil Total	3,459	3,503	3,588	2.4%

NOTE: Each filing in a civil case pertains to the complaint or petition that has been submitted to the Court for action. Filings for civil cases count as one filing regardless of the number of parties associated with the case. Civil filings in this report consist of civil and sealed civil cases. Data here are comparable to Table C-1 Civil Cases information published by the AO.

District Caseload Statistics

Civil Filed Weighted Cases*

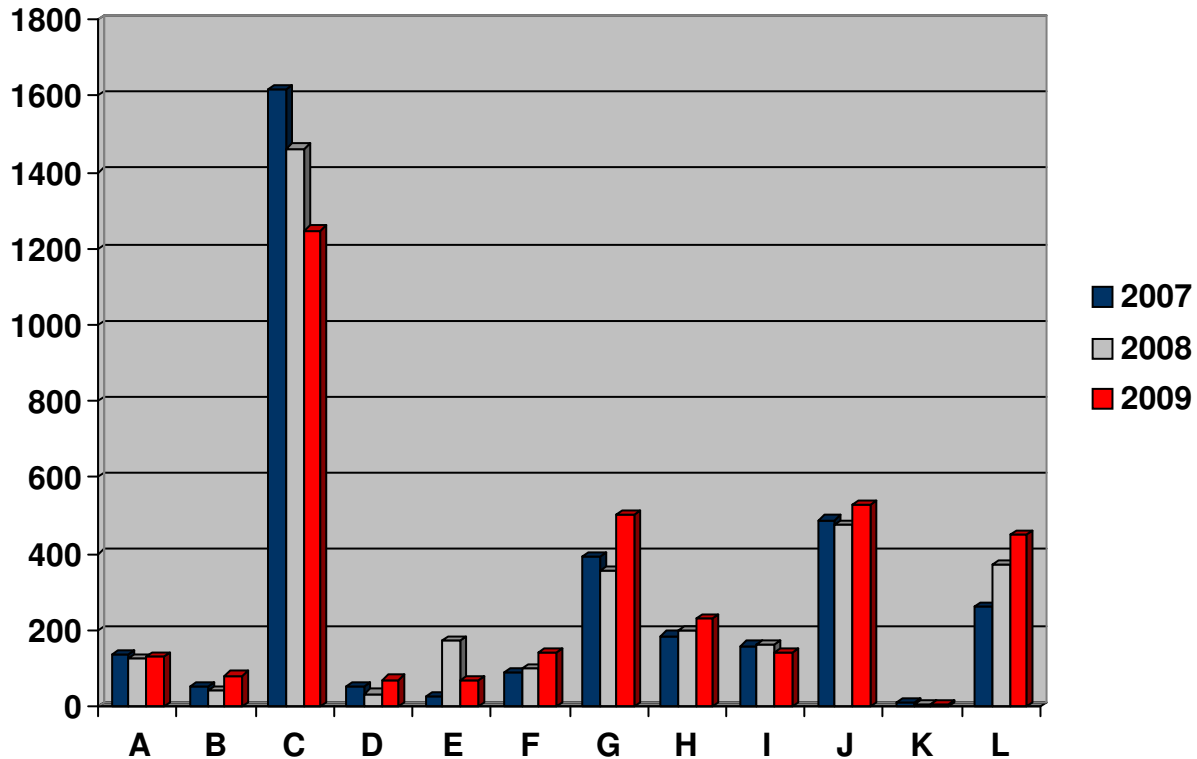


	FY2007	FY2008	FY2009	% Increase '08 to '09
Civil Total	3,410	3,498	3,770	7.8%

NOTE: Weighted case filings differ from case filings in general as they only include original proceedings, removals from state court, and transfers from other districts. All other case filing types (remands, reopens, etc) are excluded.

District Caseload Statistics

Civil Filed Cases by Major Case Type

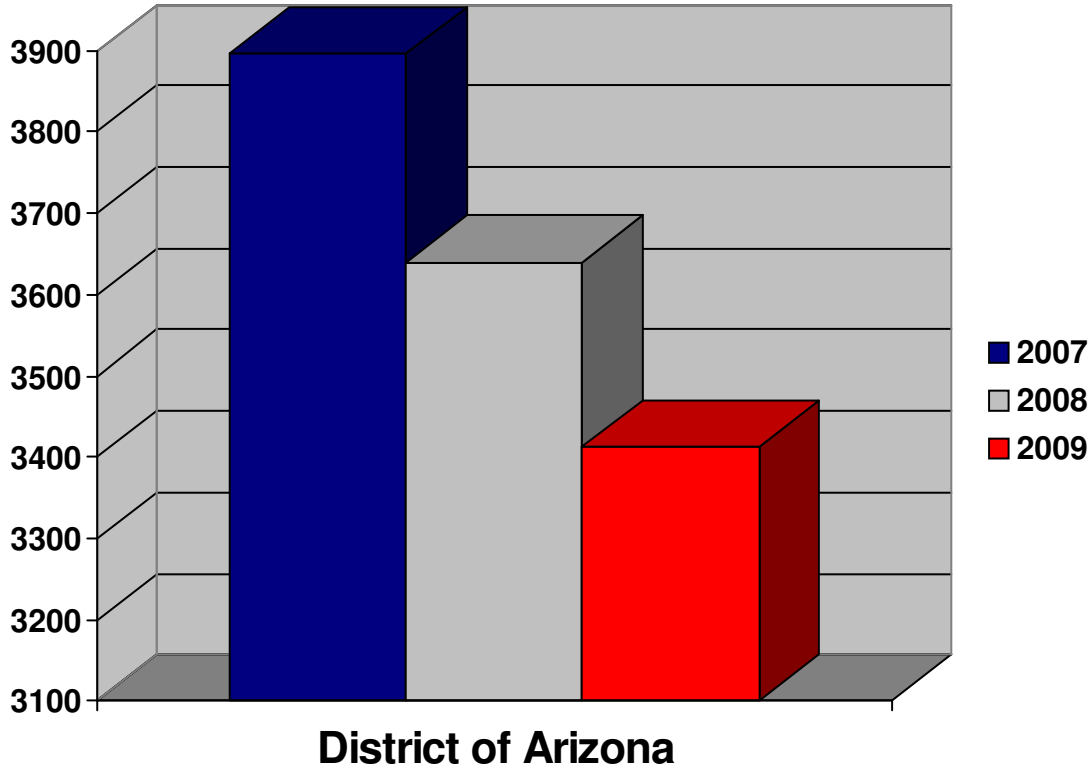


	FY2007	FY2008	FY2009	% Increase '08 to '09
A - Social Security	136	125	130	4.0%
B - Personal Injury/Product Liability	50	41	81	97.6%
C - Prisoner Petitions	1,618	1,463	1,248	-14.7%
D - Forfeitures/Penalties and Tax Suits	50	33	70	112.1%
E - Real Property	24	172	66	-61.6%
F - Labor Suits	87	100	140	40.0%
G - Contracts	392	355	502	41.4%
H - Torts (NOT Pers Inj/Prod Liab)	185	198	228	15.2%
I - Copyright, Patent, and Trademark	159	162	141	-13.0%
J - Civil Rights	489	477	530	11.1%
K - Antitrust	9	4	4	0.0%
L - All Other Civil	260	373	448	20.1%
Total	3,459	3,503	3,588	2.4%

NOTE: A complete list of Nature of Suits used in each category can be found in Appendix A. Data here are comparable to Table C-2 Civil Cases information published by the AO.

District Caseload Statistics

Civil Terminated Cases

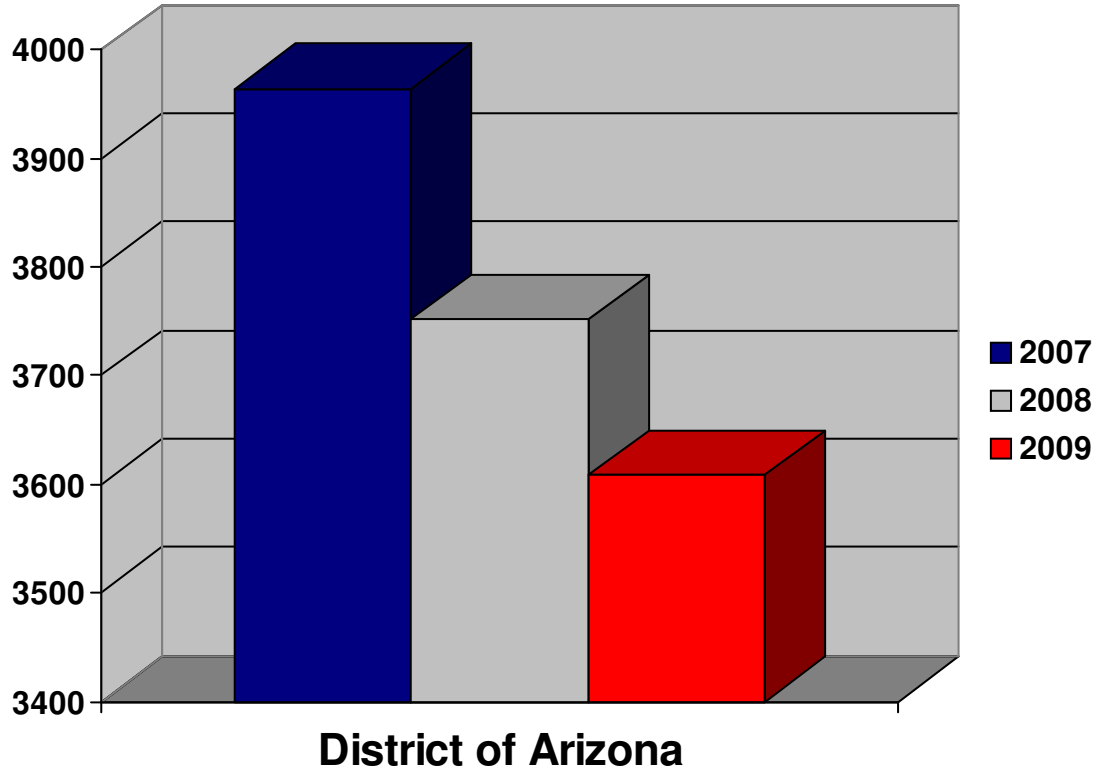


	FY2007	FY2008	FY2009	% Increase '08 to '09
Civil Total	3,896	3,640	3,412	-6.3%

NOTE: Termination of a civil case is the final settlement in the case. Terminations include both civil and sealed cases. Data here are comparable to Table C-2 Civil Case information published by the AO.

District Caseload Statistics

Civil Terminated Weighted Cases*

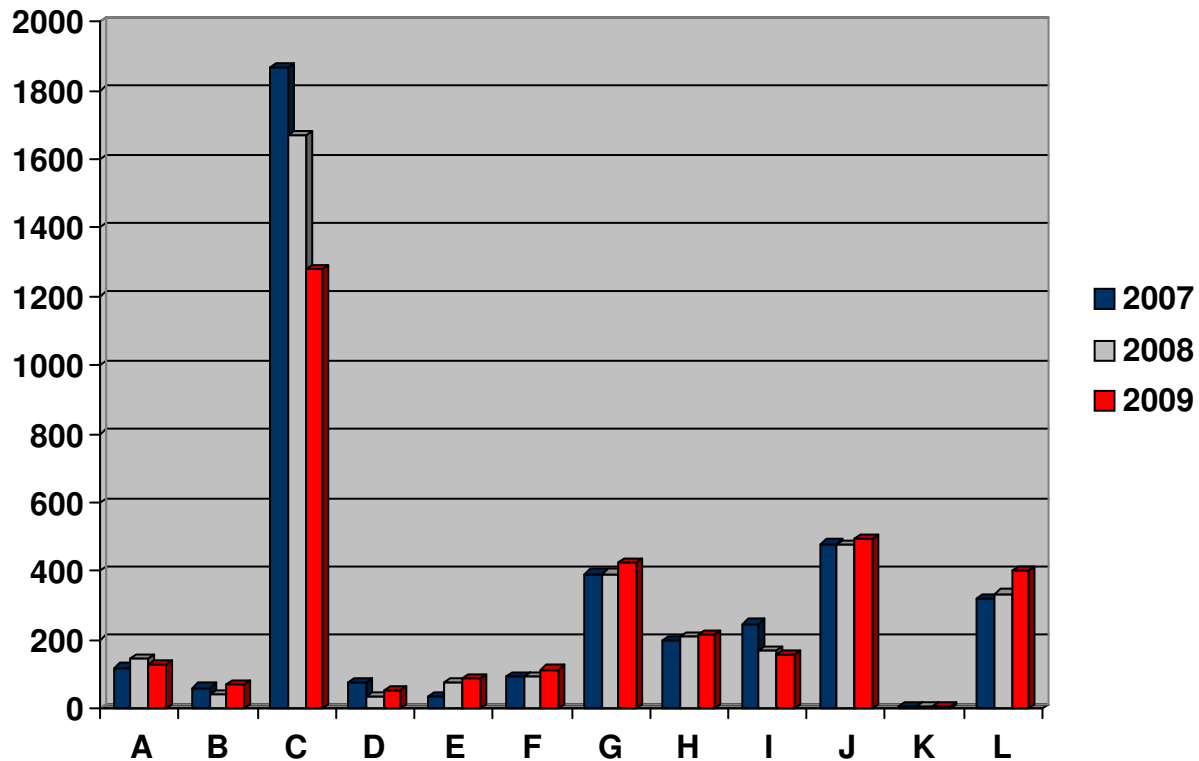


	FY2007	FY2008	FY2009	% Increase '08 to '09
Civil Total	3,964	3,752	3,608	-3.8%

NOTE: Weighted case terminations differ from case terminations in general as they only include original proceedings, removals from state court, and transfers from other districts. All other case types (remands, reopens, etc) are excluded.

District Caseload Statistics

Civil Terminated Cases by Major Case Type

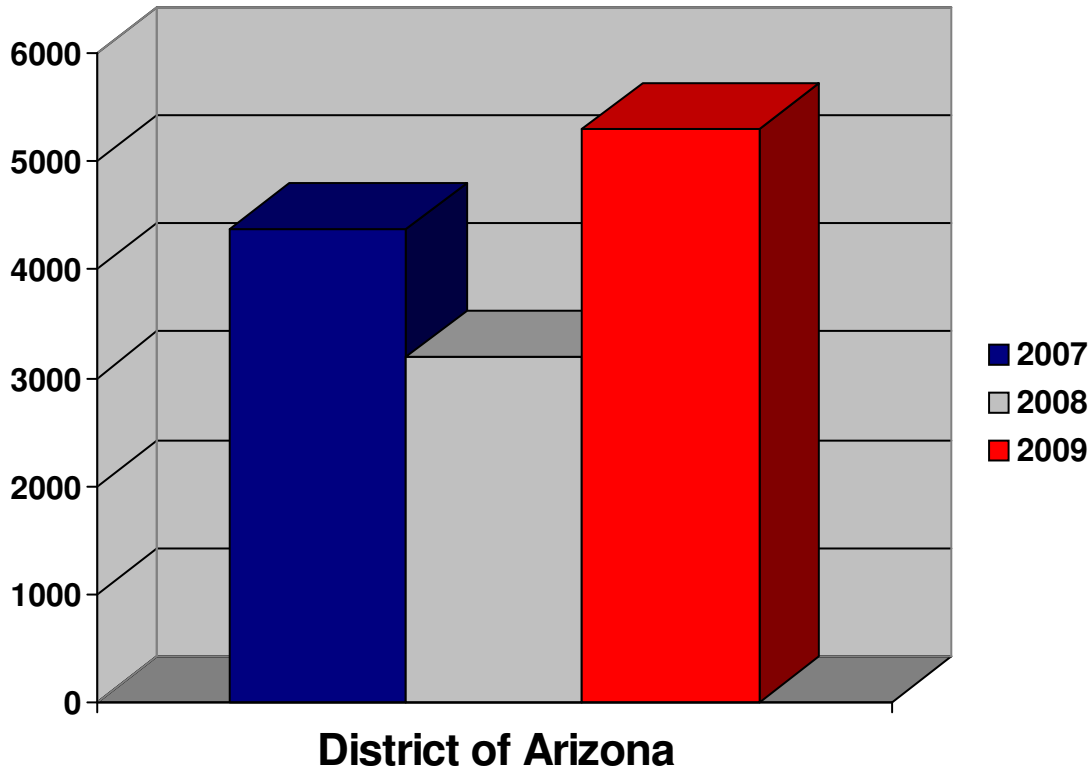


	FY2007	FY2008	FY2009	% Increase '08 to '09
A - Social Security	118	145	128	-11.7%
B - Personal Injury/Product Liability	61	42	67	59.5%
C - Prisoner Petitions	1,867	1,670	1,279	-23.4%
D - Forfeitures/Penalties and Tax Suits	77	33	50	51.5%
E - Real Property	36	74	87	17.6%
F - Labor Suits	94	92	112	21.7%
G - Contracts	392	392	424	8.2%
H - Torts (NOT Pers Inj/Prod Liab)	199	208	213	2.4%
I - Copyright, Patent, and Trademark	246	169	155	-8.3%
J - Civil Rights	479	477	492	3.1%
K - Antitrust	7	4	3	-25.0%
L - All Other Civil	320	334	402	20.4%
Total	3,896	3,640	3,412	-6.3%

NOTE: A complete list of Nature of Suits used in each category can be found in Appendix A. Data here are comparable to Table C-4 Civil Cases information published by the AO.

District Caseload Statistics

Criminal Cases Filed

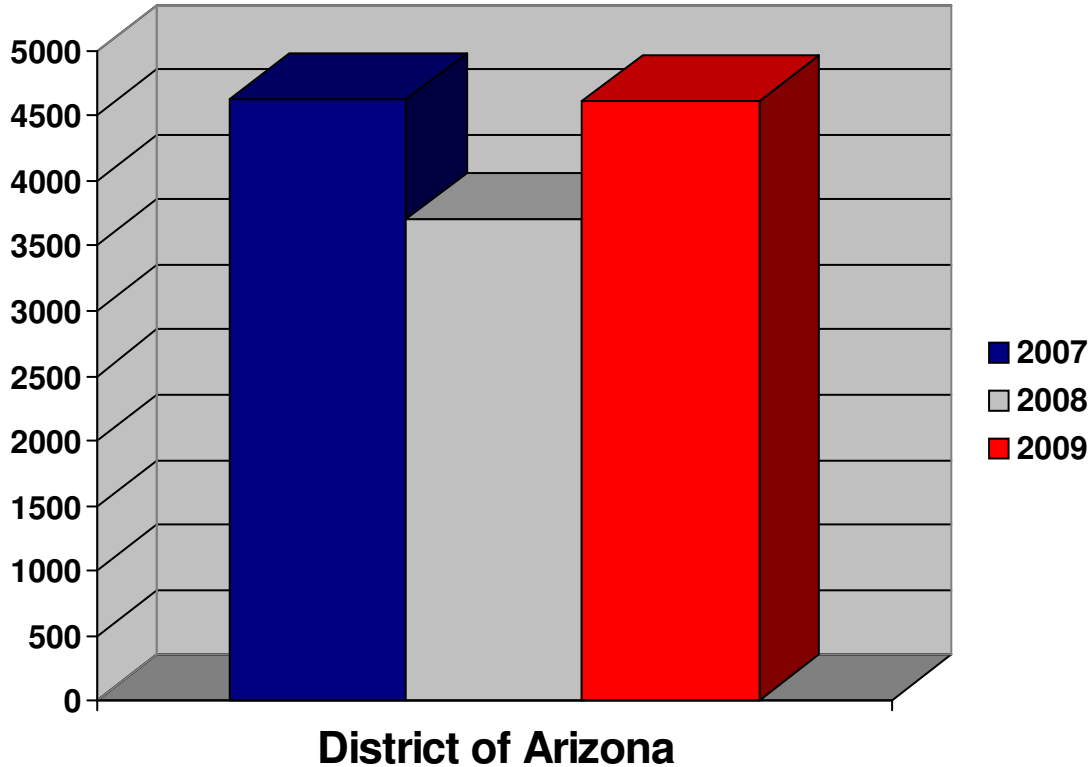


	FY2007	FY2008	FY2009	% Increase '08 to '09
Cases Total	4,378	3,186	5,296	66.2%

NOTE: Criminal case filings represent Felony cases and Class A Misdemeanor cases where defendant(s) consented to proceed before a Magistrate Judge. Data here are comparable to Table D-1 Cases information published by the AO.

District Caseload Statistics

Criminal Cases Terminated

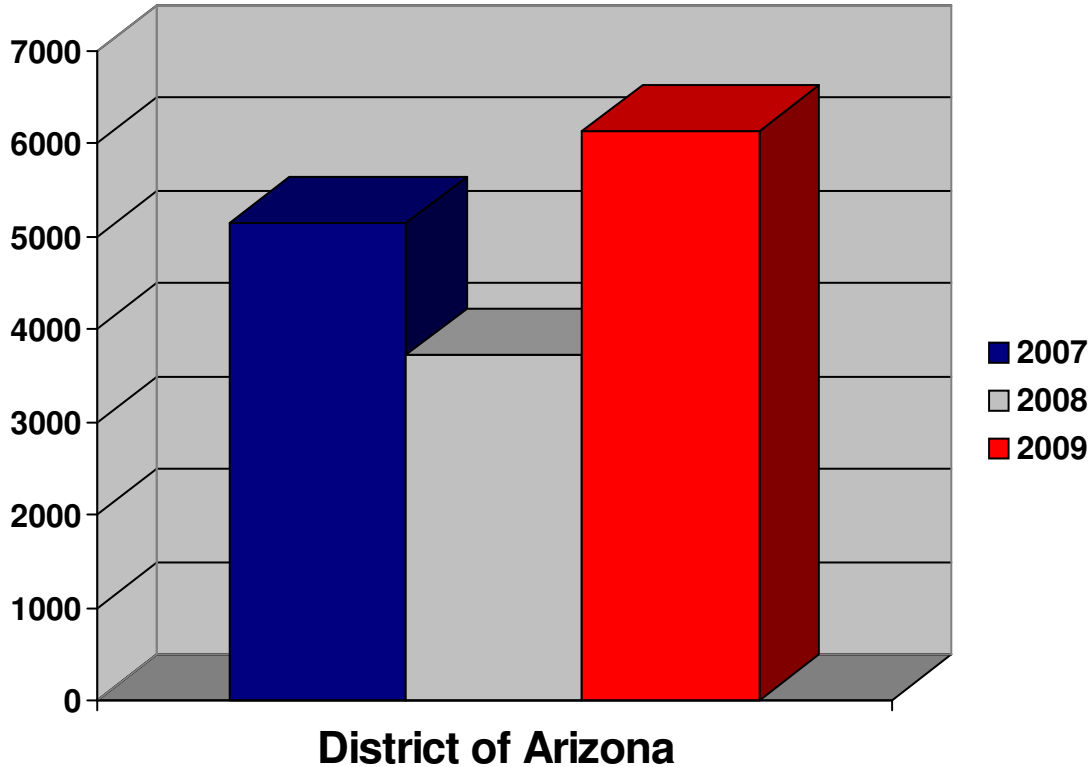


	FY2007	FY2008	FY2009	% Increase '08 to '09
Cases Total	4,627	3,705	4,608	24.4%

NOTE: Criminal case terminations represents Felony cases and Class A Misdemeanor cases where defendant(s) consented to proceed before a Magistrate Judge. Data here are comparable to Table D-1 Cases information published by the AO.

District Caseload Statistics

Criminal Defendants Filed

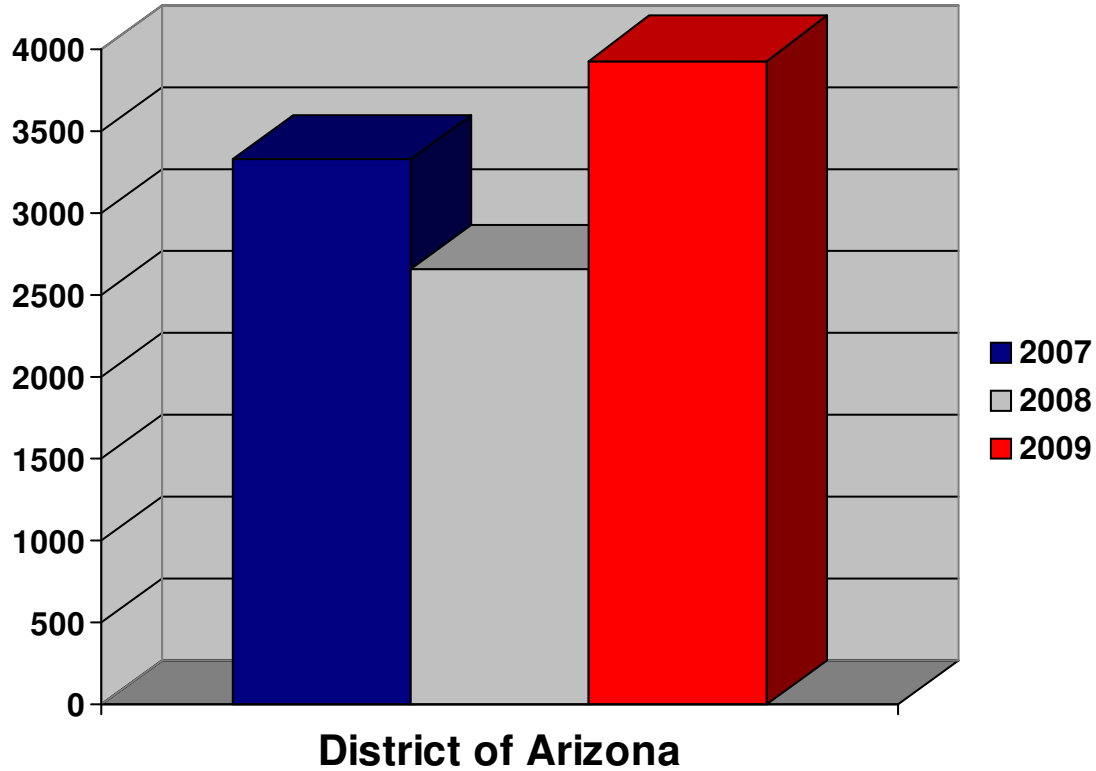


	FY2007	FY2008	FY2009	% Increase '08 to '09
Dfts Total	5,151	3,722	6,131	64.7%

NOTE: Each filing is associated with a single defendant against whom criminal charges have been filed. When a case involves multiple defendants, multiple filings are reported. Criminal defendant filings represent Felony defendants and Class A Misdemeanor defendants who consented to proceed before a Magistrate Judge. Data here are comparable to Table D-1 Defendants information published by the AO.

District Caseload Statistics

Criminal Filed Weighted Defendants*

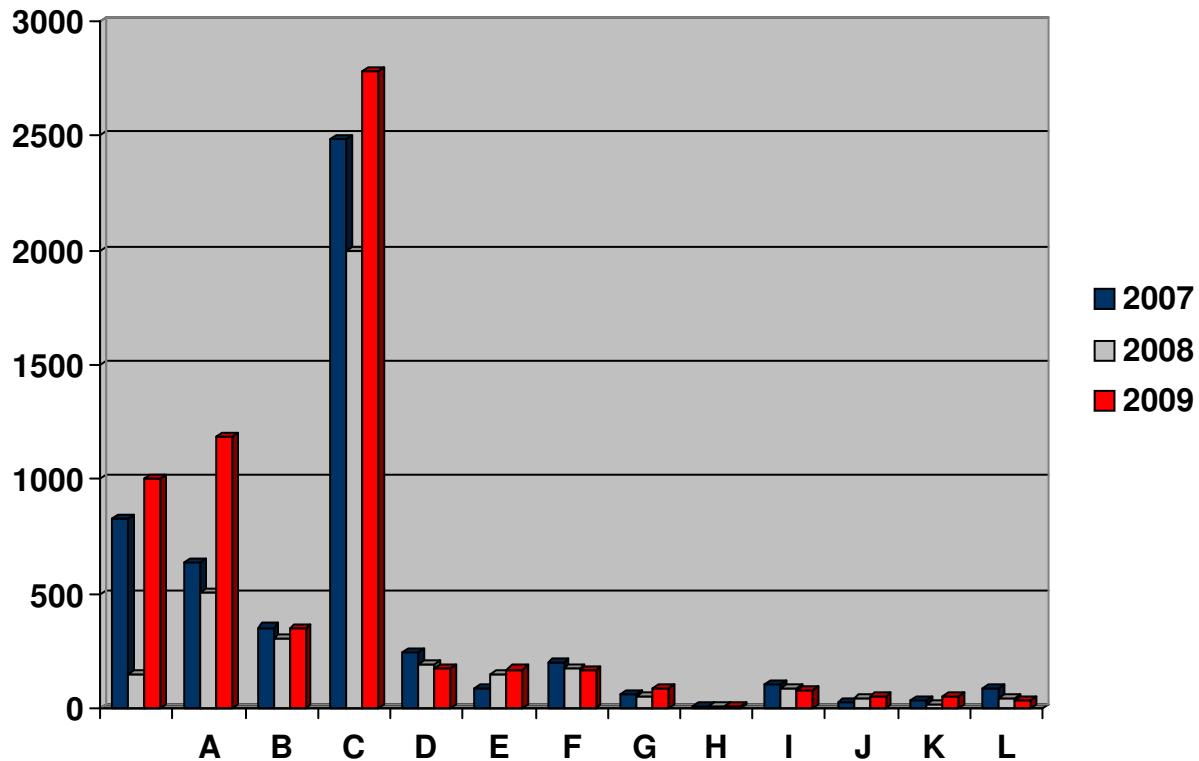


	FY2007	FY2008	FY2009	% Increase '08 to '09
Dfts Total	3,331	2,658	3,932	47.9%

NOTE: Weighted defendant filings differ from defendant filings in general as they only include original proceedings, removals from state court, and transfers from other districts. All other defendant filing types (remands, reopens, retrials, reinstatements, etc) are excluded. When multiple criminal charges are filed against a defendant, the most severe charge is counted for weighting purposes.

District Caseload Statistics

Criminal Defendants Filed by Major Case Type

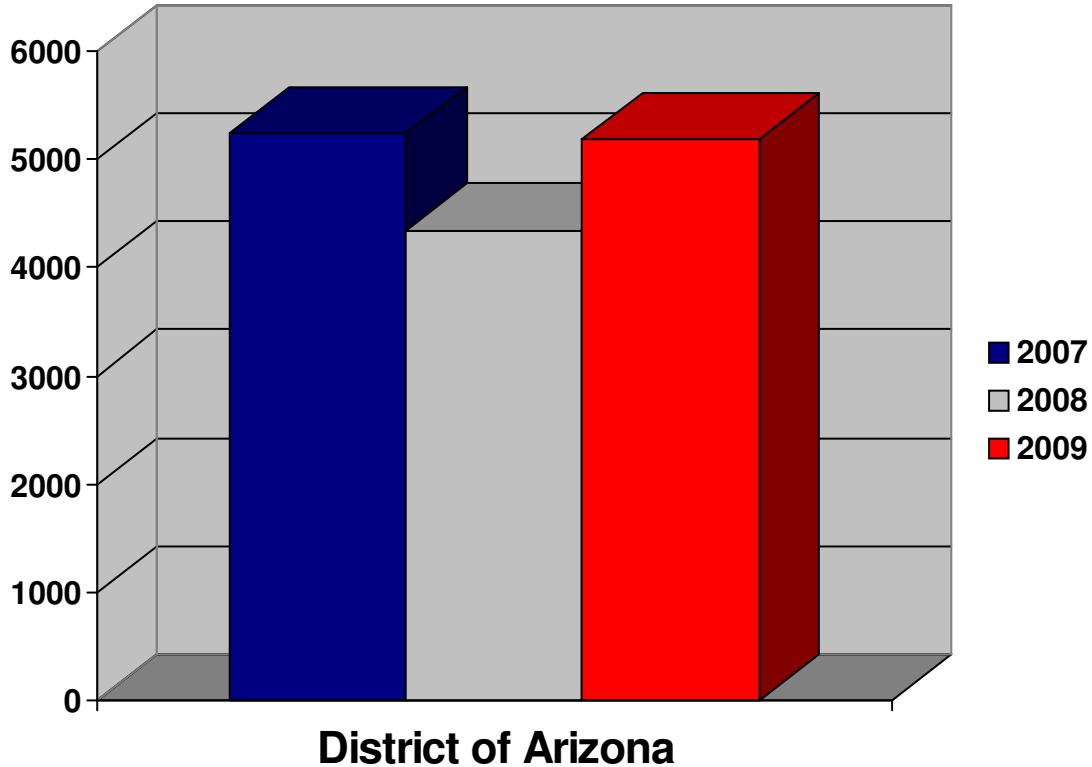


	FY2007	FY2008	FY2009	% Increase '08 to '09
A - Marijuana	636	503	1,189	136.4%
B - All Other Drugs	353	302	345	14.2%
C - Immigration	2,483	1,994	2,782	39.5%
D - Firearms and Explosives	245	189	172	-9.0%
E - Fraud	84	151	170	12.6%
F - Violent Offenses	203	176	164	-6.8%
G - Sex Offenses	63	50	89	78.0%
H - Forgery and Counterfeiting	9	9	8	-11.1%
I - Larceny and Theft	106	88	76	-13.6%
J - Justice System Offenses	24	46	52	13.0%
K - Regulatory Offenses	36	21	49	133.3%
L - All Other Criminal Felony Cases	83	43	35	-18.6%
Total	4,325	3,572	5,131	43.6%

NOTE: A complete list of Offense Types used in each category can be found in Appendix B. Data here are comparable to Table D-2 Defendants information published by the AO. Misdemeanor defendant filings are excluded.

District Caseload Statistics

Criminal Defendants Terminated

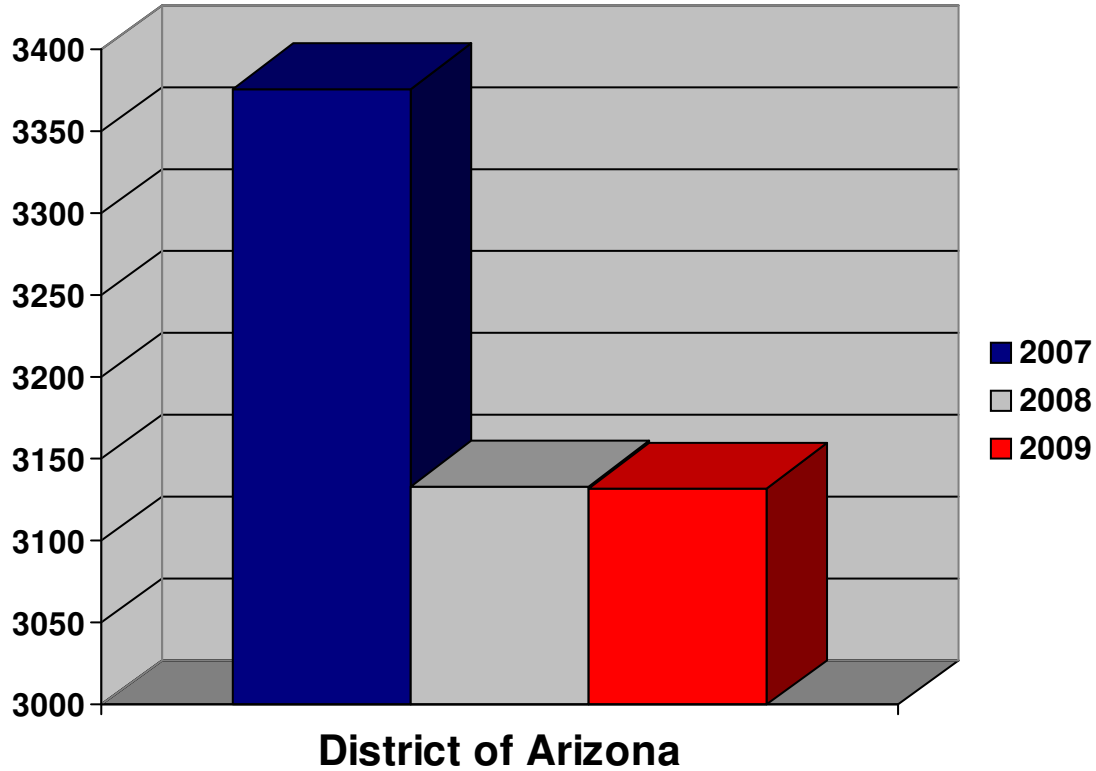


	FY2007	FY2008	FY2009	% Increase '08 to '09
Dfts Total	5,230	4,345	5,184	19.3%

NOTE: Each termination is associated with a single defendant against whom criminal charges have been terminated. Criminal defendant terminations represents Felony defendants and Class A Misdemeanor defendants who consented to proceed before a Magistrate Judge. Data here are comparable to Table D-1 Defendants information published by the AO.

District Caseload Statistics

Criminal Terminated Defendants Weighted*

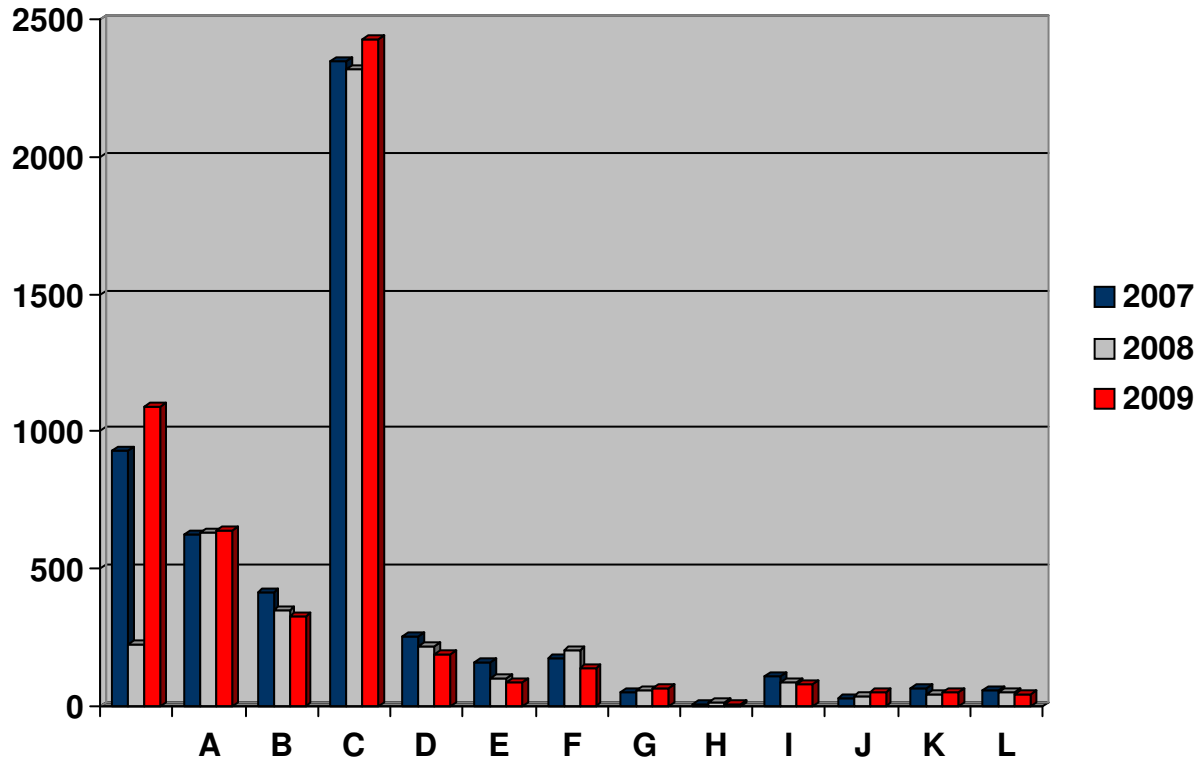


	FY2007	FY2008	FY2009	% Increase '08 to '09
Dfts Total	3,376	3,134	3,133	0.0%

NOTE: Weighted defendant terminations differ from defendant terminations in general as they only include original proceedings, removals from state court, and transfers from other districts. All other defendant types (remands, reopens, retrials, reinstatements, etc) are excluded. When multiple criminal charges are terminated for a defendant, the most severe charge is counted for weighting purposes.

District Caseload Statistics

Criminal Defendants Terminated by Major Case Type

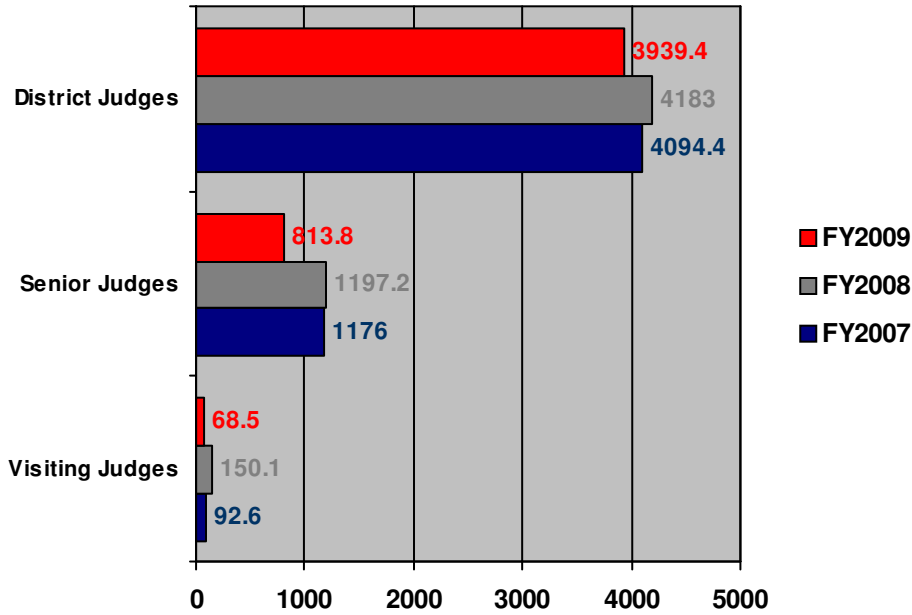


	FY2007	FY2008	FY2009	% Increase '08 to '09
A - Marijuana	624	634	638	0.6%
B - All Other Drugs	413	349	324	-7.2%
C - Immigration	2,348	2,320	2,430	4.7%
D - Firearms and Explosives	257	218	187	-14.2%
E - Fraud	158	103	86	-16.5%
F - Violent Offenses	176	205	139	-32.2%
G - Sex Offenses	50	61	62	1.6%
H - Forgery and Counterfeiting	6	12	10	-16.7%
I - Larceny and Theft	110	86	77	-10.5%
J - Justice System Offenses	32	34	49	44.1%
K - Regulatory Offenses	68	46	50	8.7%
L - All Other Criminal Felony Cases	61	53	45	-15.1%
Total	4,303	4,121	4,097	-0.6%

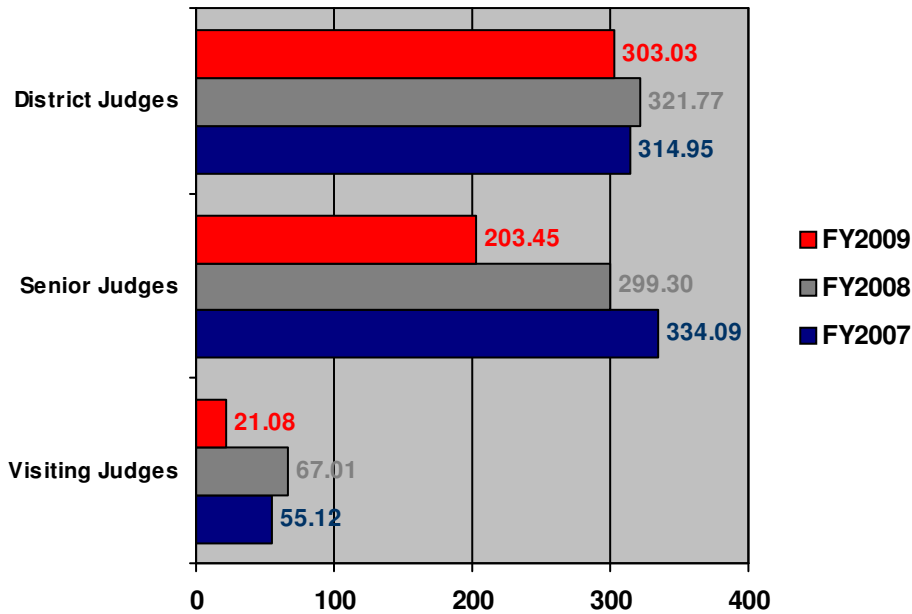
NOTE: A complete list of Offense Types used in each category can be found in Appendix B. Data here are comparable to Table D-4 Defendants information published by the AO. Misdemeanor terminations are excluded.

District Workload Statistics

District Judge Time in Court (Yearly Total for All Judges)



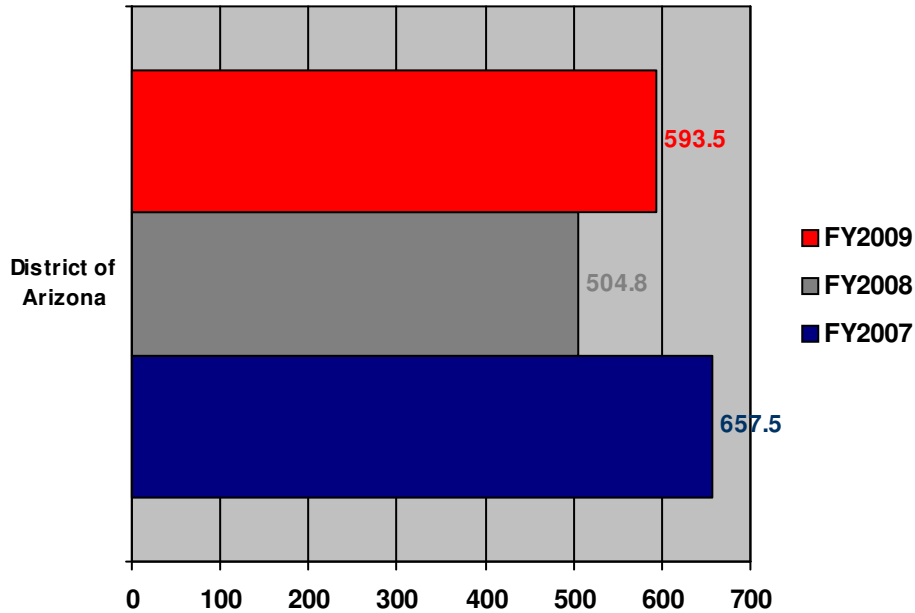
District Judge Time in Court (Yearly Avg Per Judge)



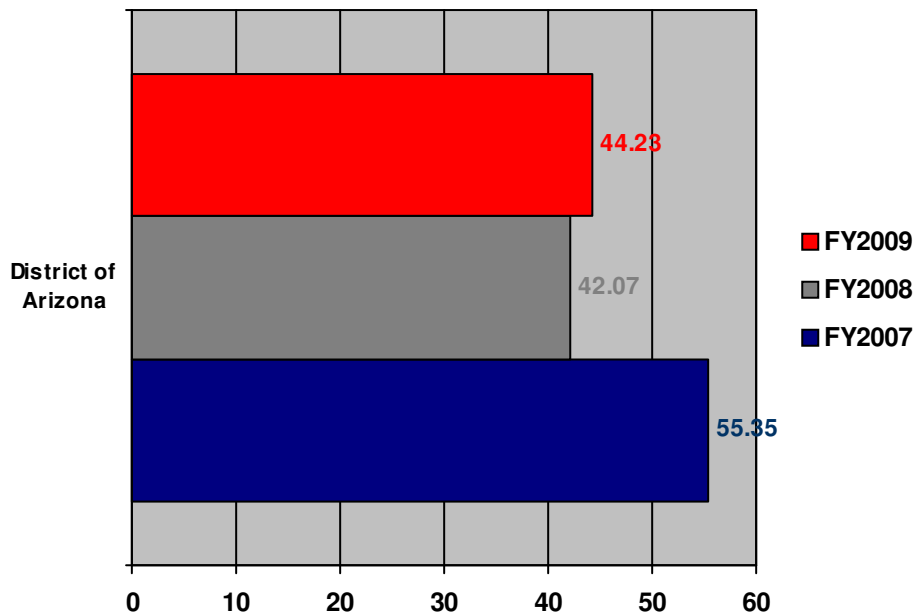
* In 2007, there were seven Visiting Judges. In 2008, there were eight Visiting Judges. In 2009, there were four Visiting Judges.

District Workload Statistics

Magistrate Judge Time in Court (Civil Total for All Judges)



Magistrate Judge Time in Court (Civil Avg Per Judge)



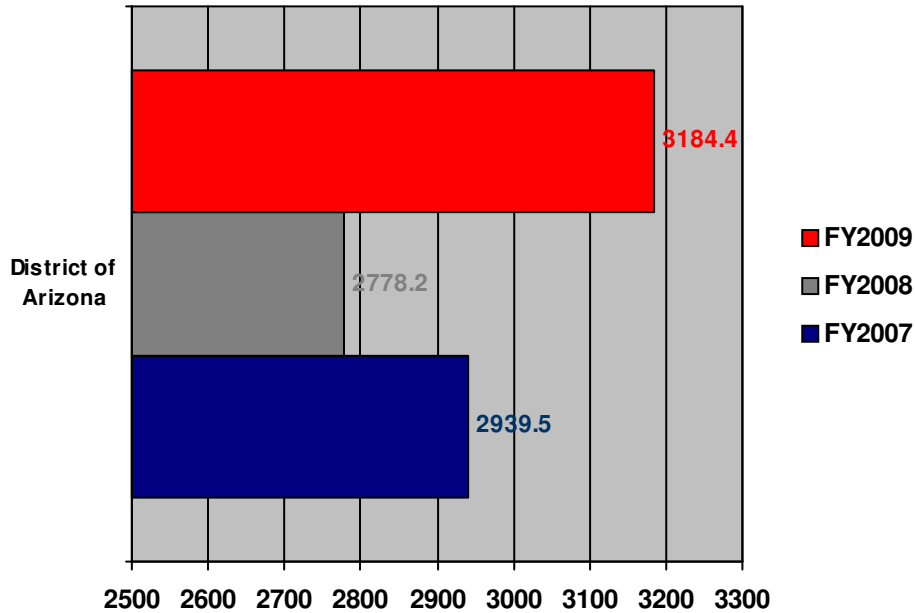
* In 2007, there were six MJs in Phoenix for ten months and five MJs for two months; six MJs in Tucson.

* In 2008, there were six MJs in Phoenix, six MJs in Tucson.

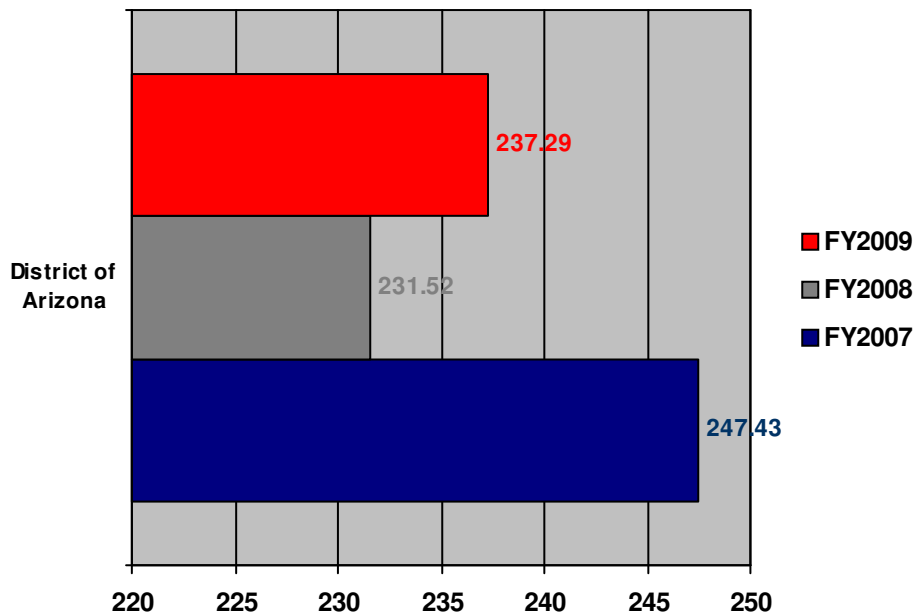
* In 2009, there were six MJs in Phoenix, one part-time magistrate for 5 months; six MJs in Tucson for three months and seven MJs for 9 months.

District Workload Statistics

Magistrate Judge Time in Court (Criminal Total for All Judges)



Magistrate Judge Time in Court (Criminal Avg Per Judge)



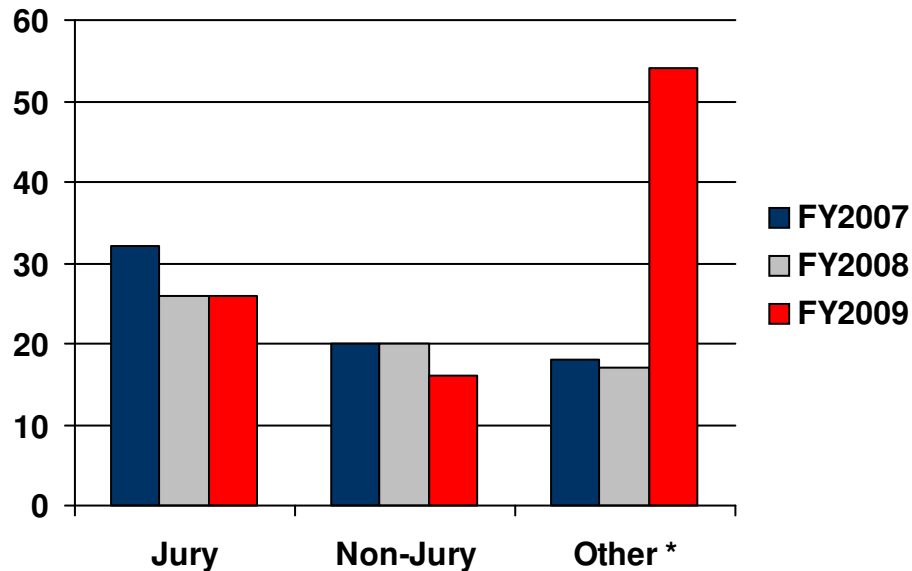
* In 2007, there were six MJ's in Phoenix for ten months and five MJ's for two months; six MJ's in Tucson.

* In 2008, there were six MJ's in Phoenix, six MJ's in Tucson.

* In 2009, there were six MJ's in Phoenix, one part-time magistrate for 5 months; six MJ's in Tucson for three months and seven MJ's for 9 months.

District Workload Statistics

Total Civil Trials

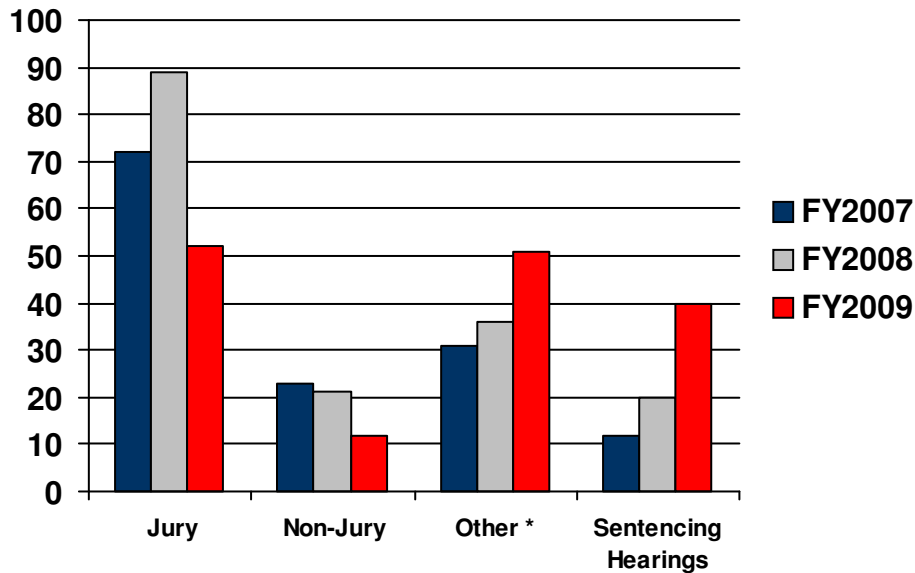


Trial Type	FY2007	FY2008	FY2009	% Increase '08 to '09
Jury	32	26	26	0.0%
Non-Jury	20	20	16	-20.0%
Other *	18	17	54	217.6%
Civil Trial Totals	70	63	96	52.4%

NOTE: Data are attributed to the FY in which the trial completes. "Other" trials includes contested hearings on motions for preliminary injunctions, temporary restraining orders, evidence, or other matters not resulting in a final judgment or verdict. Data here are comparable to Table T-1 Civil Trials information published by the AO.

District Workload Statistics

Total Criminal Trials

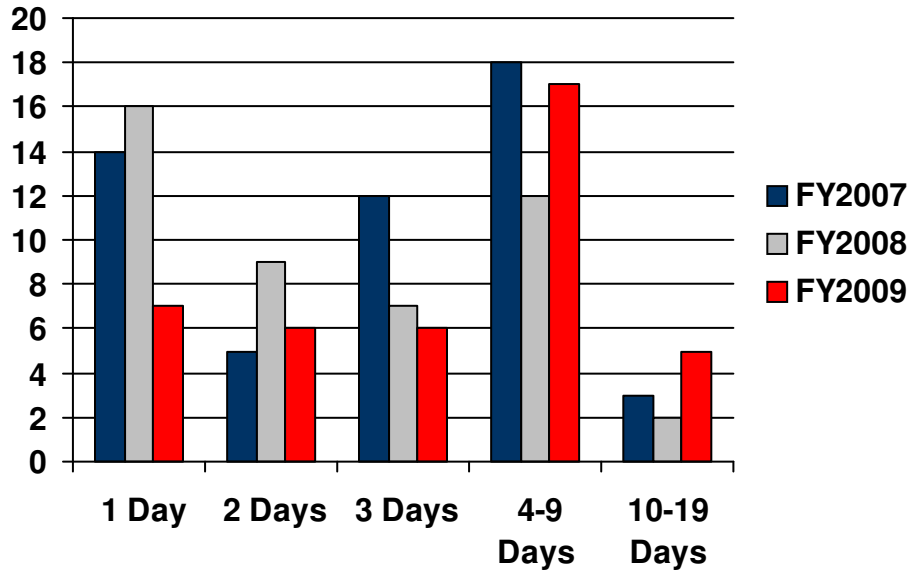


Trial Type	FY2007	FY2008	FY2009	% Increase '08 to '09
Jury	72	89	52	-41.6%
Non-Jury	23	21	12	-42.9%
Other *	30	36	44	22.2%
Sentencing Hearing	12	20	40	100.0%
Criminal Trial Totals	137	166	148	-10.8%

NOTE: Data are attributed to the FY in which the trial completes. "Other" trials includes contested hearings on motions for preliminary injunctions, temporary restraining orders, evidence, or other matters not resulting in a final judgment or verdict. Data here are comparable to Table T-1 Criminal Trials information published by the AO.

District Workload Statistics

Length of Civil Trials

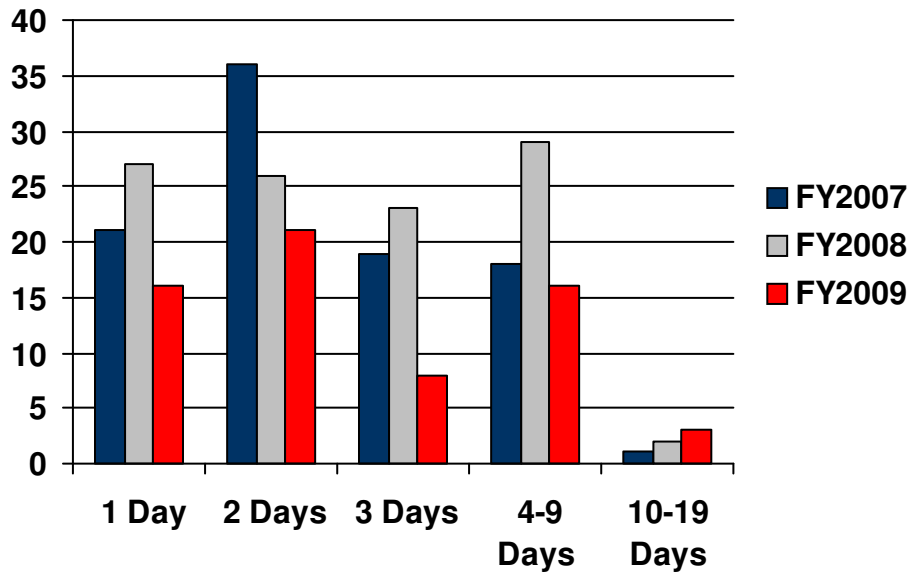


	FY2007	FY2008	FY2009	% Increase '08 to '09
1 Day	14	16	7	-56.3%
2 Days	5	9	6	-33.3%
3 Days	12	7	6	-14.3%
4-9 Days	18	12	17	41.7%
10-19 Days	3	2	5	150.0%
Trial Days Totals	52	46	41	-10.9%

Note: includes trials conducted by district and appellate judges only. All trials conducted by magistrate judges are excluded. Excludes hearings on supervised release proceedings, probation revocation proceedings, hearings on contested motions, and other contested proceedings not resulting in a verdict or judgment. Only includes Non-Jury and Jury trials. Data here are comparable to Table T-2 Trial Lengths information published by the AO.

District Workload Statistics

Length of Criminal Trials

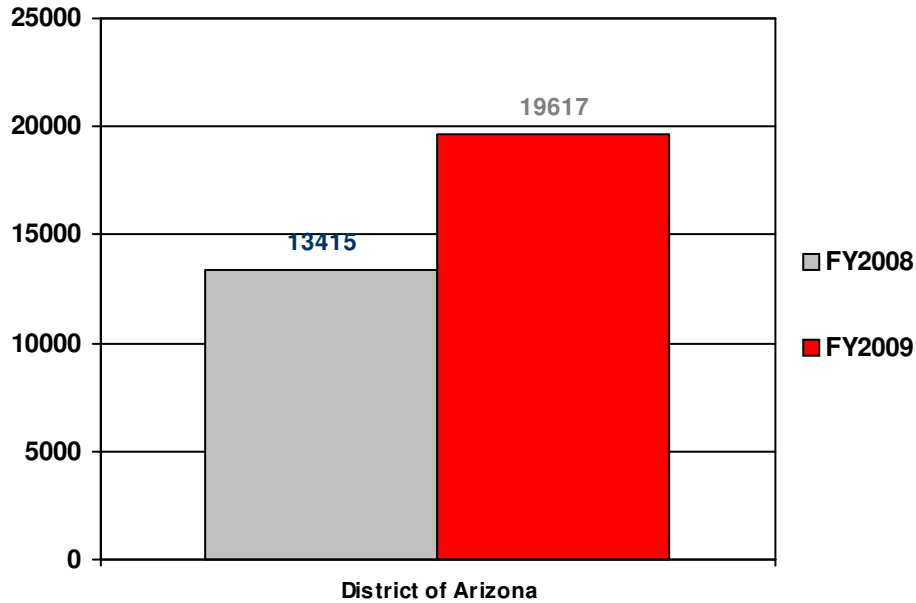


	FY2007	FY2008	FY2009	% Increase '08 to '09
1 Day	21	27	16	-40.7%
2 Days	36	26	21	-19.2%
3 Days	19	23	8	-65.2%
4-9 Days	18	29	16	-44.8%
10-19 Days	1	2	3	50.0%
Trial Days Totals	95	107	64	-40.2%

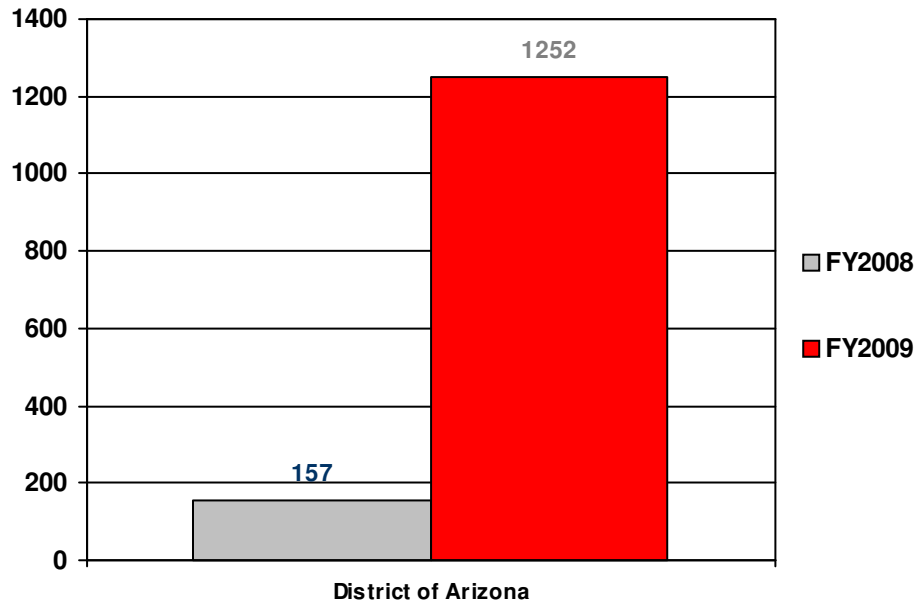
Note: includes trials conducted by district and appellate judges only. All trials conducted by magistrate judges are excluded. Excludes hearings on supervised release proceedings, probation revocation proceedings, hearings on contested motions, and other contested proceedings not resulting in a verdict or judgment. Only includes Non-Jury and Jury trials. Data here are comparable to Table T-2 Trial Lengths information published by the AO.

District Workload Statistics

Magistrate Judge Petty Offense Dispositions



Magistrate Judge Misdemeanor Dispositions



NOTE: Misdemeanor dispositions are Class A Misdemeanor cases where defendant(s) consented to proceed before a Magistrate Judge. Petty dispositions do not include CVB dispositions. Data here are comparable to Table M-1a and M-2a Defendants Disposed information published by the AO.

District Workload Statistics

Petty Offense Dispositions by Type

	FY2008	FY2009	% Increase '08 to '09
Alcohol	48	44	-8.3%
Assault	11	16	45.5%
Camping	6	16	166.7%
DestroyProp	3	2	-33.3%
Disorderly	18	21	16.7%
Drugs	4	15	275.0%
DwiDui	70	70	0.0%
Fraud	5	7	40.0%
HuntFish	25	38	52.0%
Immigration	12,085	18,922	56.6%
Other	35	35	0.0%
OtherTraffic	38	47	23.7%
Theft	3	5	66.7%
Timber	1	4	300.0%
Trespass	3	7	133.3%
Weapons	4	0	-100.0%
Total	12,359	19,249	55.7%

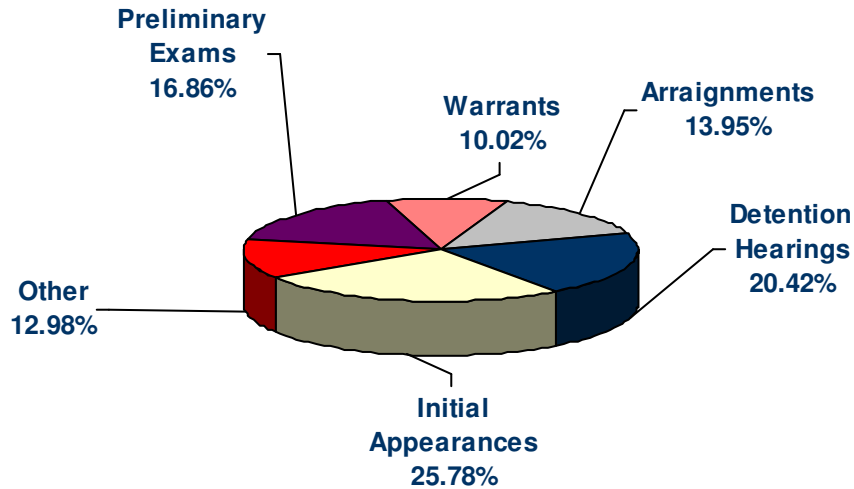
Misdemeanor Dispositions by Type

	FY2008	FY2009	% Increase '08 to '09
Misd Assault	6	3	-50.0%
Misd Drugs	0	0	0.0%
Misd Fraud	42	1,020	2328.6%
Misd Mail	5	6	20.0%
Misd Other	50	207	314.0%
Misd Theft	5	9	80.0%
Misd Traffic	4	2	-50.0%
Misd Trespass	2	0	-100.0%
Misd Weapons	0	1	100.0%
Total	114	1,248	994.7%

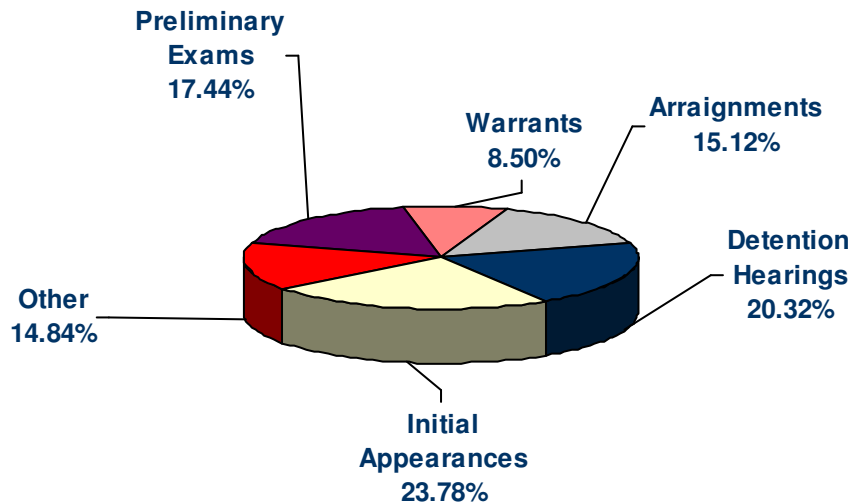
NOTE: Misdemeanor dispositions are Class A Misdemeanor cases where defendant(s) consented to proceed before a Magistrate Judge. Data here are comparable to Table M-1 Defendants Disposed information published by the AO. Petty Dispositions are all convictions in Petty Offense cases excluding CVB cases. Data there are comparable to Table M-2 Defendants Disposed information published by the AO.

District Workload Statistics

MJ Preliminary Proceedings Under U.S. 28 § 636(a) - FY2008



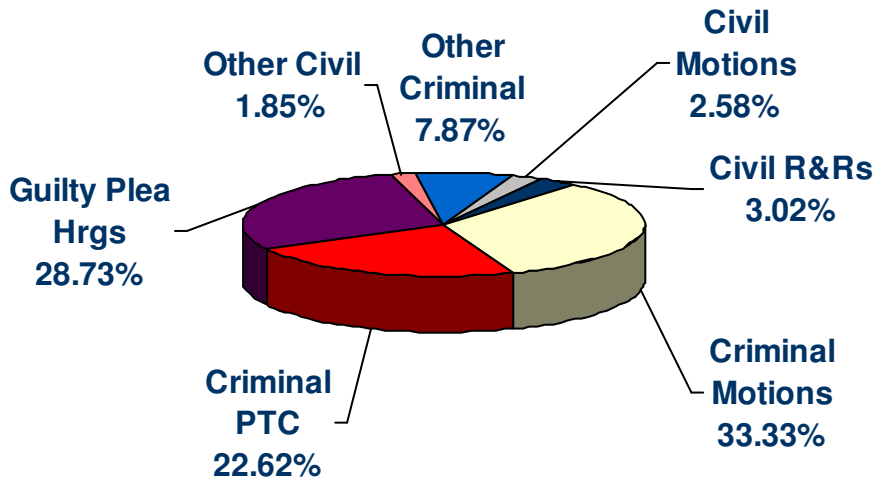
MJ Preliminary Proceedings Under U.S. 28 § 636(a) - FY2009



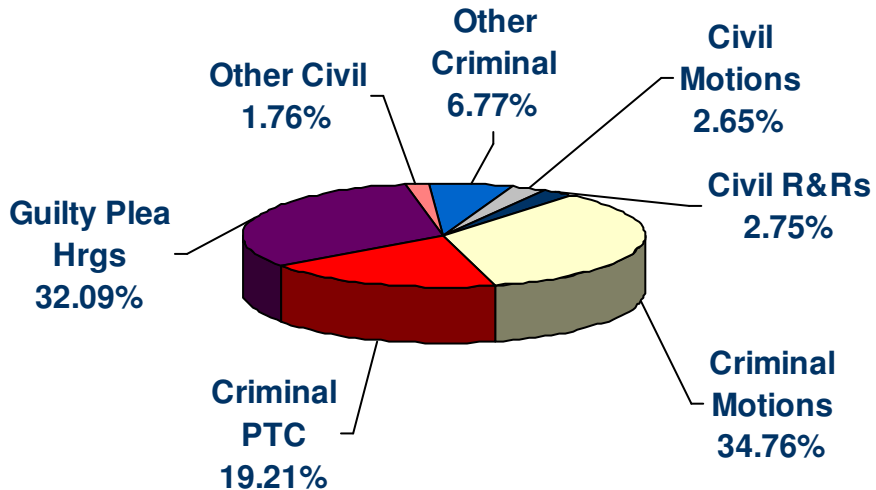
NOTE: Other category includes: attorney appointment, material witness, and bail review/nebbia hearings. Data here are comparable to Table M-3 Preliminary Proceeding information published by the AO.

District Workload Statistics

MJ DUTIES UNDER U.S. 28 § 636(b) - FY2008



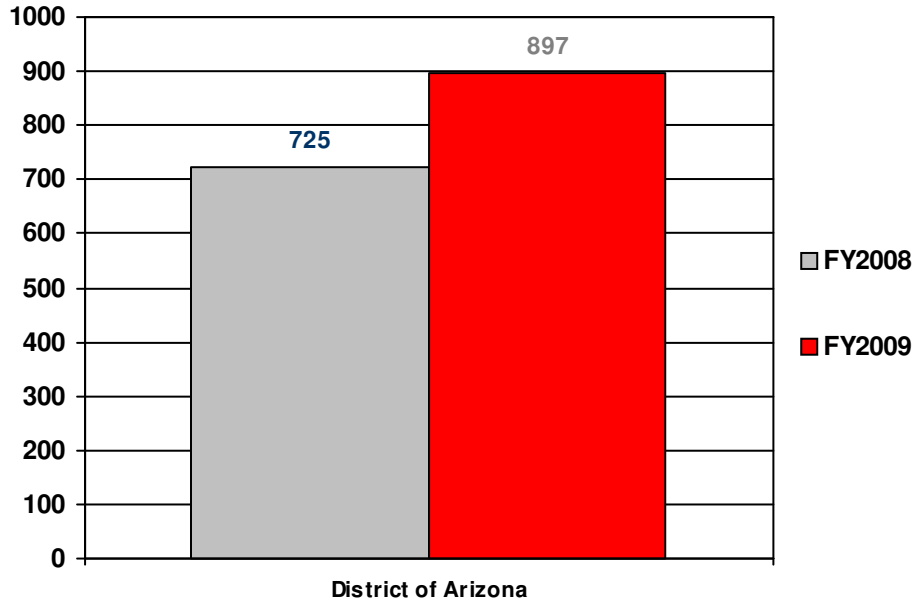
MJ DUTIES UNDER U.S. 28 § 636(b) - FY2009



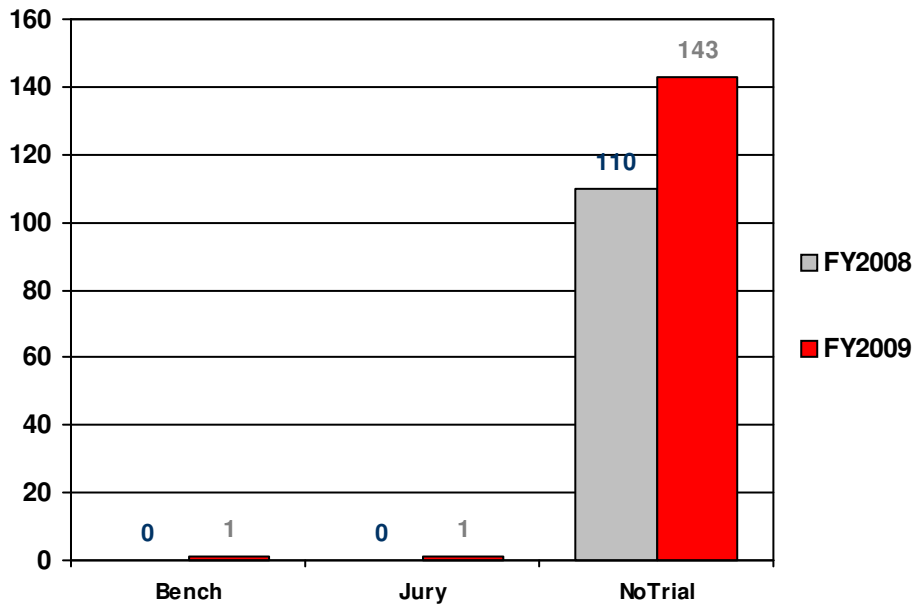
Other Criminal includes: supervised release, mental competency, evidentiary, motion, probation revocation hearings and writs. Other Civil includes: non-consent settlement conferences, pretrial conferences, evidentiary hearings, motion hearings, and fee applications. Data here are comparable to Table M-4 and M-4a Matters Handled by Magstration Judges information published by the AO.

District Workload Statistics

Magistrate Judge Orders Issued in Consent Cases



Magistrate Judge Consent Case Disposition Type

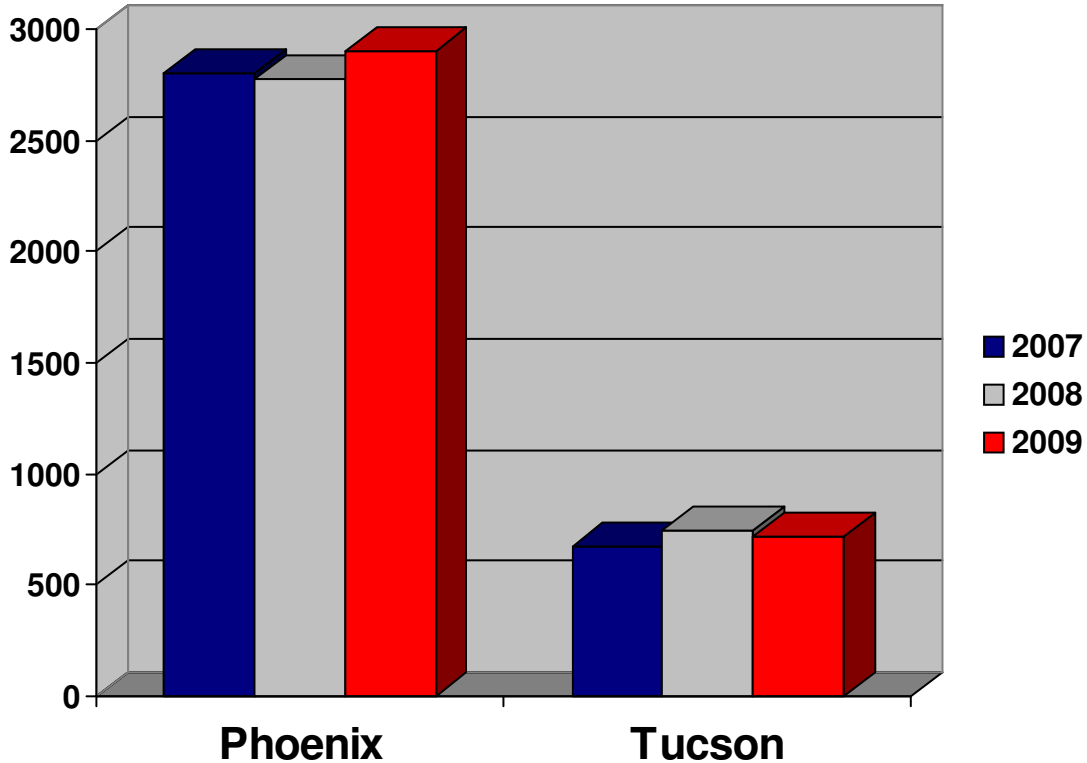


Data here are comparable to Table M-5 Civil Cases Terminated information published by the AO.

Division Specific Statistics

Divisional Caseload Statistics

Civil Filed Cases

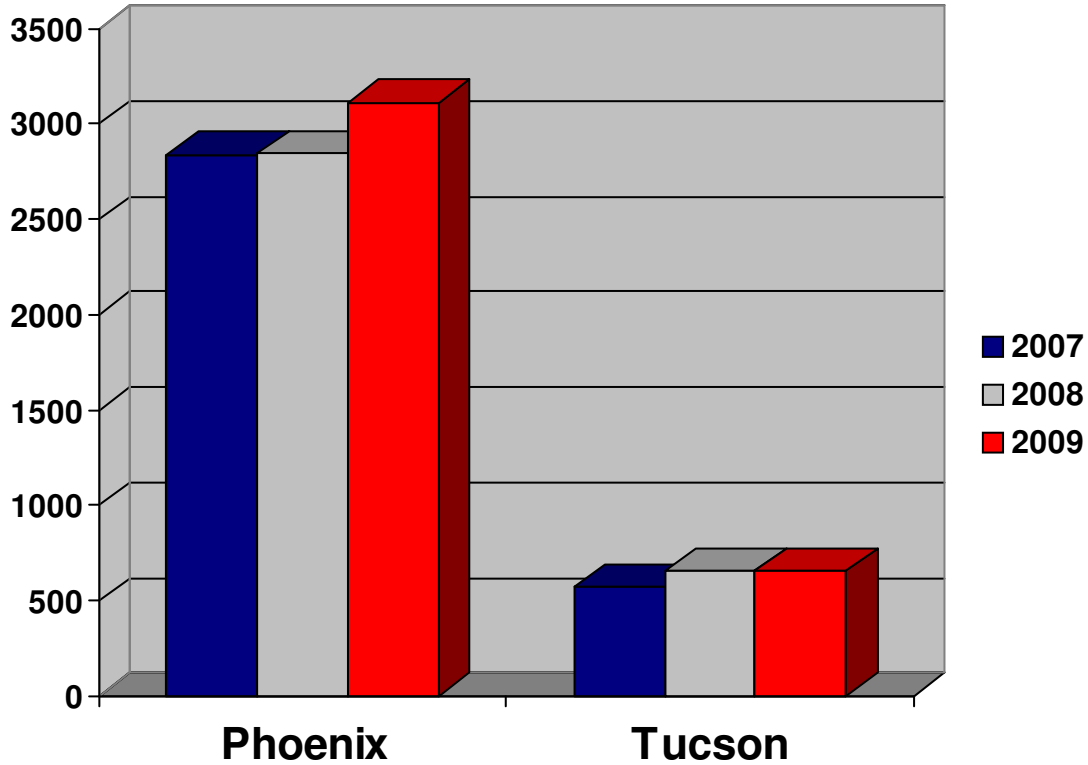


	FY2007	FY2008	FY2009	% Increase '08 to '09
Phoenix	2,786	2,761	2,874	4.09%
Tucson	673	742	714	-3.77%
Civil Total	3,459	3,503	3,588	2.4%

NOTE: Each filing in a civil case pertains to the complaint or petition that has been submitted to the Court for action. Filings for civil cases count as one filing regardless of the number of parties associated with the case. Civil filings in this report consist of civil and sealed civil cases. Data here are comparable to Table C-1 Civil Cases information published by the AO.

Divisional Caseload Statistics

Civil Filed Weighted Cases*



	FY2007	FY2008	FY2009	% Increase '08 to '09
Phoenix	2,837	2,842	3,112	9.50%
Tucson	573	656	658	0.29%
Civil Total	3,410	3,498	3,770	7.8%

NOTE: Weighted case filings differ from case filings in general as they only include original proceedings, removals from state court, and transfers from other districts. All other case filing types (remands, reopens, etc) are excluded.

Divisional Caseload Statistics

Civil Filed Cases by Major Case Type - Phoenix

	FY2007	FY2008	FY2009	% Increase '08 to '09
A - Social Security	97	95	93	-2.1%
B - Personal Injury/Product Liability	43	33	70	112.1%
C - Prisoner Petitions	1,265	1,095	903	-17.5%
D - Forfeitures/Penalties and Tax Suits	30	20	42	110.0%
E - Real Property	22	142	61	-57.0%
F - Labor Suits	79	89	126	41.6%
G - Contracts	335	304	435	43.1%
H - Torts (NOT Pers Inj/Prod Liab)	130	151	185	22.5%
I - Copyright, Patent, and Trademark	139	149	128	-14.1%
J - Civil Rights	427	375	448	19.5%
K - Antitrust	8	3	3	0.0%
L - All Other Civil	211	305	380	24.6%
Total	2,786	2,761	2,874	4.1%

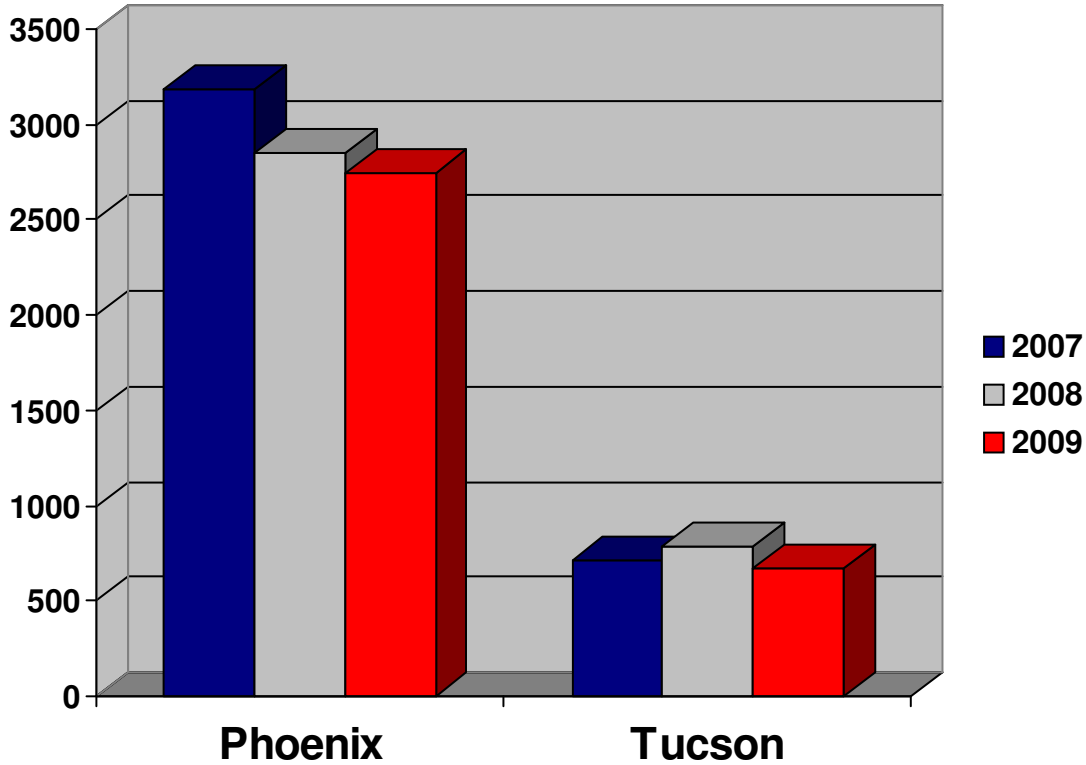
Civil Filed Cases by Major Case Type - Tucson

	FY2007	FY2008	FY2009	% Increase '08 to '09
A - Social Security	39	30	37	23.3%
B - Personal Injury/Product Liability	7	8	11	37.5%
C - Prisoner Petitions	353	368	345	-6.3%
D - Forfeitures/Penalties and Tax Suits	20	13	28	115.4%
E - Real Property	2	30	5	-83.3%
F - Labor Suits	8	11	14	27.3%
G - Contracts	57	51	67	31.4%
H - Torts (NOT Pers Inj/Prod Liab)	55	47	43	-8.5%
I - Copyright, Patent, and Trademark	20	13	13	0.0%
J - Civil Rights	62	102	82	-19.6%
K - Antitrust	1	1	1	0.0%
L - All Other Civil	49	68	68	0.0%
Total	673	742	714	-3.8%

NOTE: A complete list of Nature of Suits used in each category can be found in Appendix A. Data here are comparable to Table C-2 Civil Cases information published by the AO.

Divisional Caseload Statistics

Civil Terminated Cases

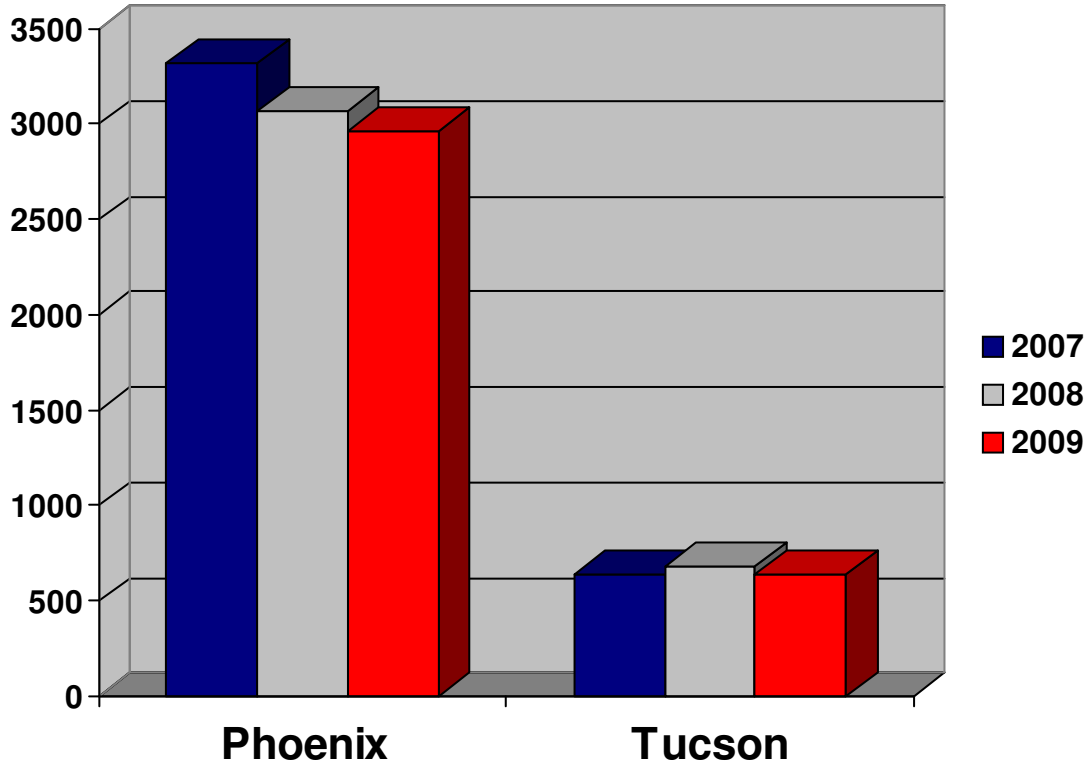


	FY2007	FY2008	FY2009	% Increase '08 to '09
Phoenix	3,187	2,854	2,743	-3.89%
Tucson	709	786	669	-14.89%
Civil Total	3,896	3,640	3,412	-6.3%

NOTE: Termination of a civil case is the final settlement in the case. Terminations include both civil and sealed cases. Data here are comparable to Table C-2 Civil Case information published by the AO.

Divisional Caseload Statistics

Civil Terminated Weighted Cases*



	FY2007	FY2008	FY2009	% Increase '08 to '09
Phoenix	3,320	3,068	2,966	-3.34%
Tucson	644	683	642	-6.03%
Civil Total	3,964	3,752	3,608	-3.8%

NOTE: Weighted case terminations differ from case terminations in general as they only include original proceedings, removals from state court, and transfers from other districts. All other case types (remands, reopens, etc) are excluded.

Divisional Caseload Statistics

Civil Terminated Cases by Major Case Type - Phoenix

	FY2007	FY2008	FY2009	% Increase '08 to '09
A - Social Security	91	102	100	-2.0%
B - Personal Injury/Product Liability	52	35	58	65.7%
C - Prisoner Petitions	1,523	1,217	939	-22.8%
D - Forfeitures/Penalties and Tax Suits	53	17	35	105.9%
E - Real Property	26	71	75	5.6%
F - Labor Suits	80	83	100	20.5%
G - Contracts	327	335	376	12.2%
H - Torts (NOT Pers Inj/Prod Liab)	142	164	165	0.6%
I - Copyright, Patent, and Trademark	213	154	147	-4.5%
J - Civil Rights	408	405	408	0.7%
K - Antitrust	6	4	1	-75.0%
L - All Other Civil	266	267	339	27.0%
Total	3,187	2,854	2,743	-3.9%

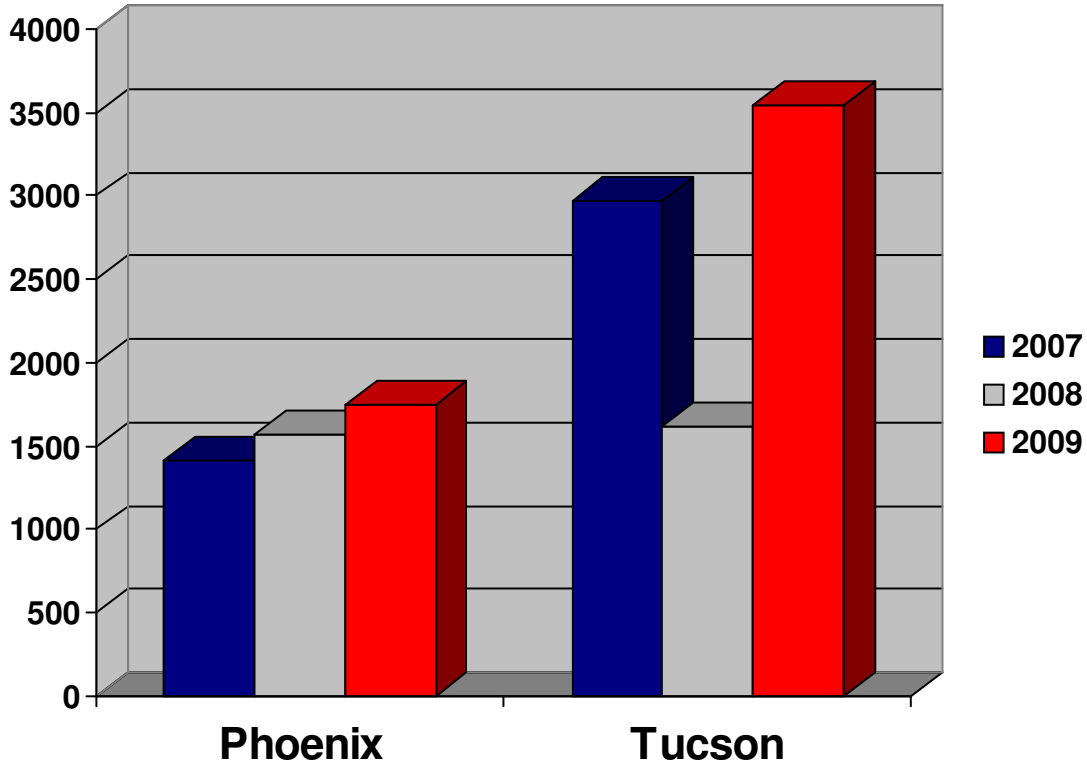
Civil Terminated Cases by Major Case Type - Tucson

	FY2007	FY2008	FY2009	% Increase '08 to '09
A - Social Security	27	43	28	-34.9%
B - Personal Injury/Product Liability	9	7	9	28.6%
C - Prisoner Petitions	344	453	340	-24.9%
D - Forfeitures/Penalties and Tax Suits	24	16	15	-6.3%
E - Real Property	10	3	12	300.0%
F - Labor Suits	14	9	12	33.3%
G - Contracts	65	57	48	-15.8%
H - Torts (NOT Pers Inj/Prod Liab)	57	44	48	9.1%
I - Copyright, Patent, and Trademark	33	15	8	-46.7%
J - Civil Rights	71	72	84	16.7%
K - Antitrust	1	0	2	100.0%
L - All Other Civil	54	67	63	-6.0%
Total	709	786	669	-14.9%

NOTE: A complete list of Nature of Suits used in each category can be found in Appendix A. Data here are comparable to Table C-4 Civil Cases information published by the AO.

Divisional Caseload Statistics

Criminal Cases Filed

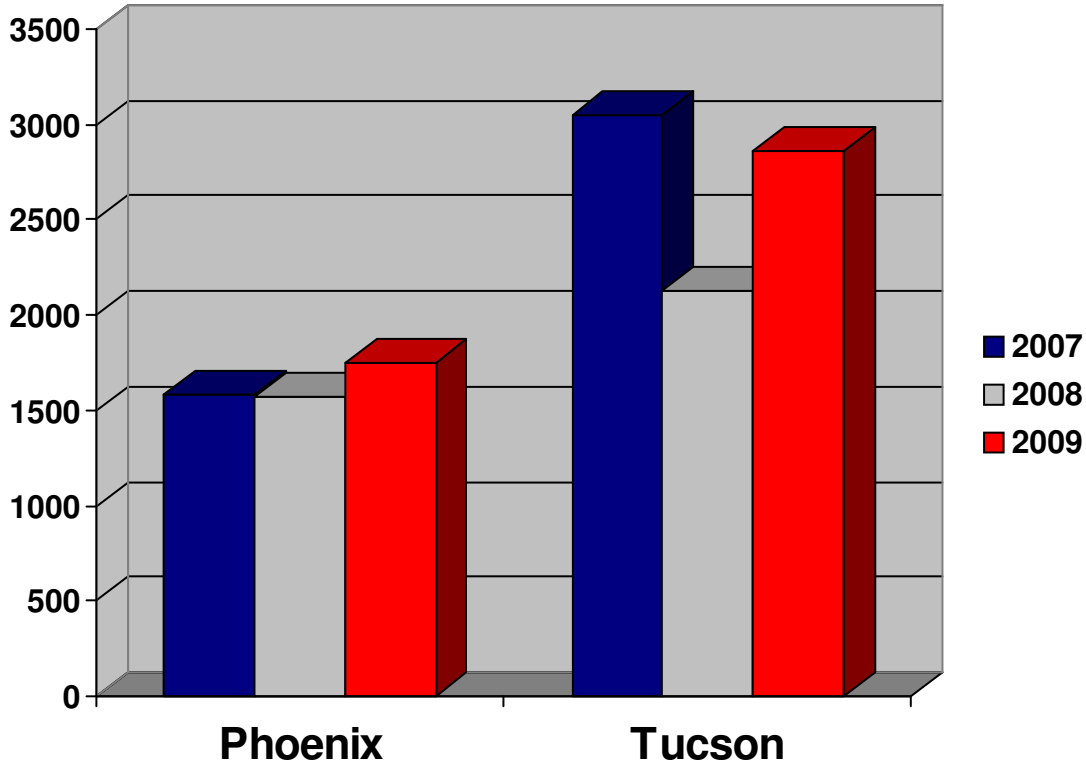


	FY2007	FY2008	FY2009	% Increase '08 to '09
Phoenix	1,409	1,568	1,753	11.80%
Tucson	2,969	1,618	3,543	118.97%
Cases Total	4,378	3,186	5,296	66.2%

NOTE: Criminal case filings represent Felony cases and Class A Misdemeanor cases where defendant(s) consented to proceed before a Magistrate Judge. Data here are comparable to Table D-1 Cases information published by the AO.

Divisional Caseload Statistics

Criminal Cases Terminated

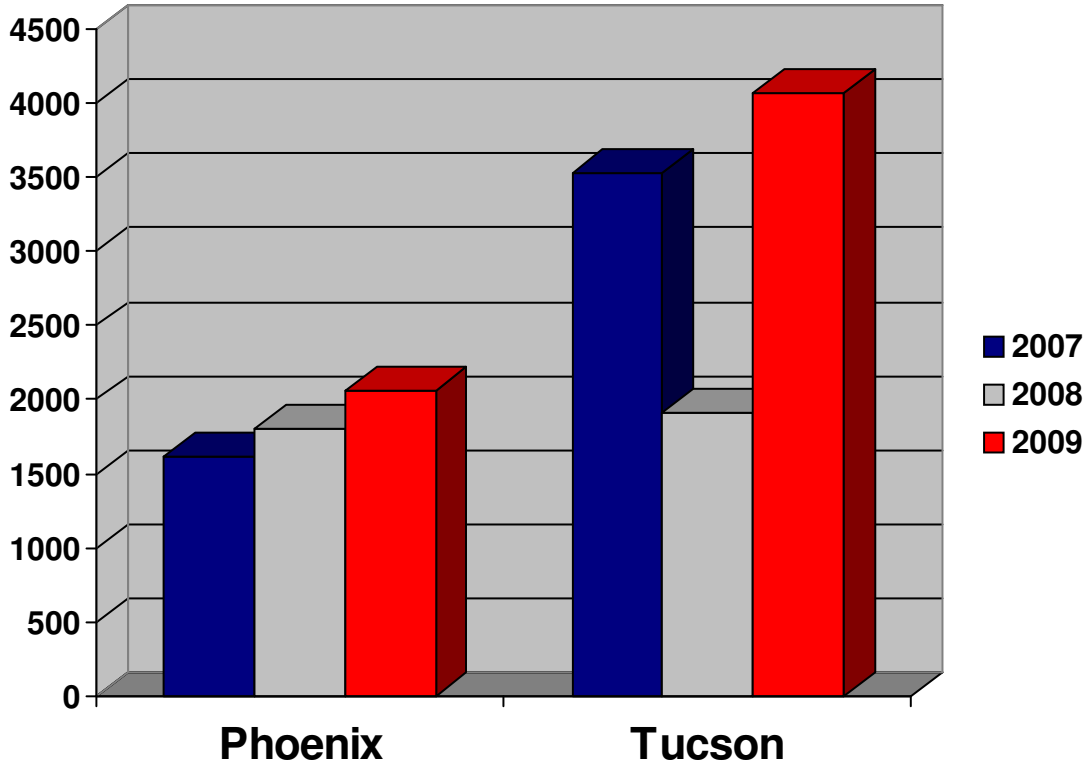


	FY2007	FY2008	FY2009	% Increase '08 to '09
Phoenix	1,579	1,576	1,747	10.85%
Tucson	3,048	2,129	2,861	34.38%
Cases Total	4,627	3,705	4,608	24.4%

NOTE: Criminal case terminations represents Felony cases and Class A Misdemeanor cases where defendant(s) consented to proceed before a Magistrate Judge. Data here are comparable to Table D-1 Cases information published by the AO.

Divisional Caseload Statistics

Criminal Defendants Filed

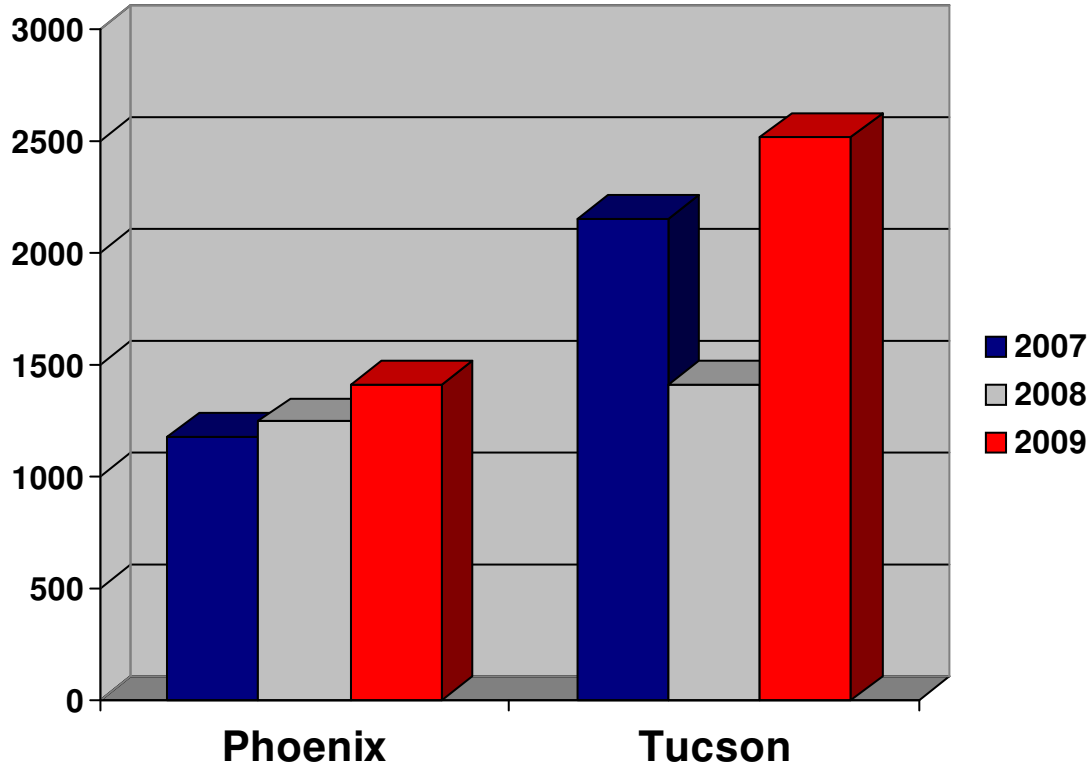


	FY2007	FY2008	FY2009	% Increase '08 to '09
Phoenix	1,619	1,807	2,064	14.22%
Tucson	3,532	1,915	4,067	112.38%
Dfts Total	5,151	3,722	6,131	64.7%

NOTE: Each filing is associated with a single defendant against whom criminal charges have been filed. When a case involves multiple defendants, multiple filings are reported. Criminal defendant filings represent Felony defendants and Class A Misdemeanor defendants who consented to proceed before a Magistrate Judge. Data here are comparable to Table D-1 Defendants information published by the AO.

Divisional Caseload Statistics

Criminal Filed Weighted Defendants*



	FY2007	FY2008	FY2009	% Increase '08 to '09
Phoenix	1,178	1,246	1,413	13.42%
Tucson	2,154	1,412	2,519	78.34%
Dfts Total	3,331	2,658	3,932	47.9%

NOTE: Weighted defendant filings differ from defendant filings in general as they only include original proceedings, removals from state court, and transfers from other districts. All other defendant filing types (remands, reopens, retrials, reinstatements, etc) are excluded. When multiple criminal charges are filed against a defendant, the most severe charge is counted for weighting purposes.

Divisional Caseload Statistics

Criminal Defendant Filings by Major Case Type - Phoenix

	FY2007	FY2008	FY2009	% Increase '08 to '09
A - Marijuana	26	49	99	102.0%
B - All Other Drugs	157	154	149	-3.2%
C - Immigration	895	1,056	1,258	19.1%
D - Firearms and Explosives	128	96	99	3.1%
E - Fraud	45	79	126	59.5%
F - Violent Offenses	154	136	111	-18.4%
G - Sex Offenses	44	25	68	172.0%
H - Forgery and Counterfeiting	1	6	3	-50.0%
I - Larceny and Theft	36	37	35	-5.4%
J - Justice System Offenses	8	28	30	7.1%
K - Regulatory Offenses	22	9	14	55.6%
L - All Other Criminal Felony Cases	21	28	18	-35.7%
Total	1,537	1,703	2,010	18.0%

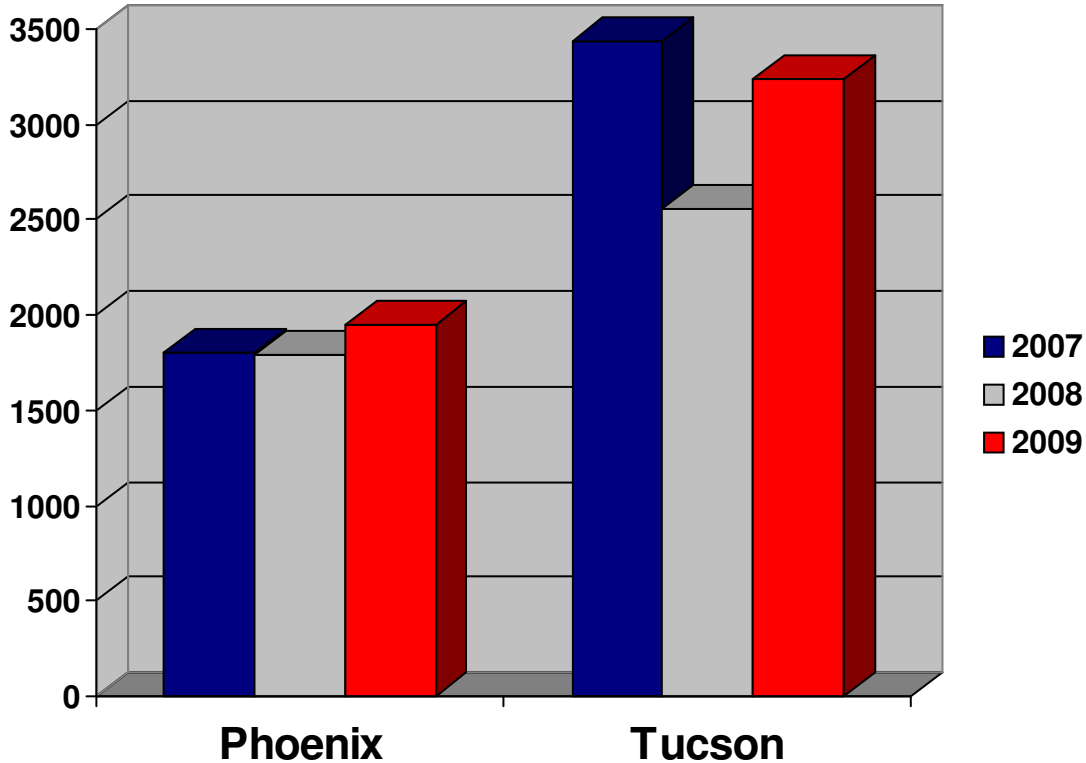
Criminal Defendant Filings by Major Case Type - Tucson

	FY2007	FY2008	FY2009	% Increase '08 to '09
A - Marijuana	610	454	1,090	140.1%
B - All Other Drugs	196	148	196	32.4%
C - Immigration	1,588	938	1,524	62.5%
D - Firearms and Explosives	117	93	73	-21.5%
E - Fraud	39	72	44	-38.9%
F - Violent Offenses	49	40	53	32.5%
G - Sex Offenses	19	25	21	-16.0%
H - Forgery and Counterfeiting	8	3	5	66.7%
I - Larceny and Theft	70	51	41	-19.6%
J - Justice System Offenses	16	18	22	22.2%
K - Regulatory Offenses	14	12	35	191.7%
L - All Other Criminal Felony Cases	62	15	17	13.3%
Total	2,788	1,869	3,121	67.0%

NOTE: A complete list of Offense Types used in each category can be found in Appendix B. Data here are comparable to Table D-2 Defendants information published by the AO. Misdemeanor filings are excluded.

Divisional Caseload Statistics

Criminal Defendants Terminated

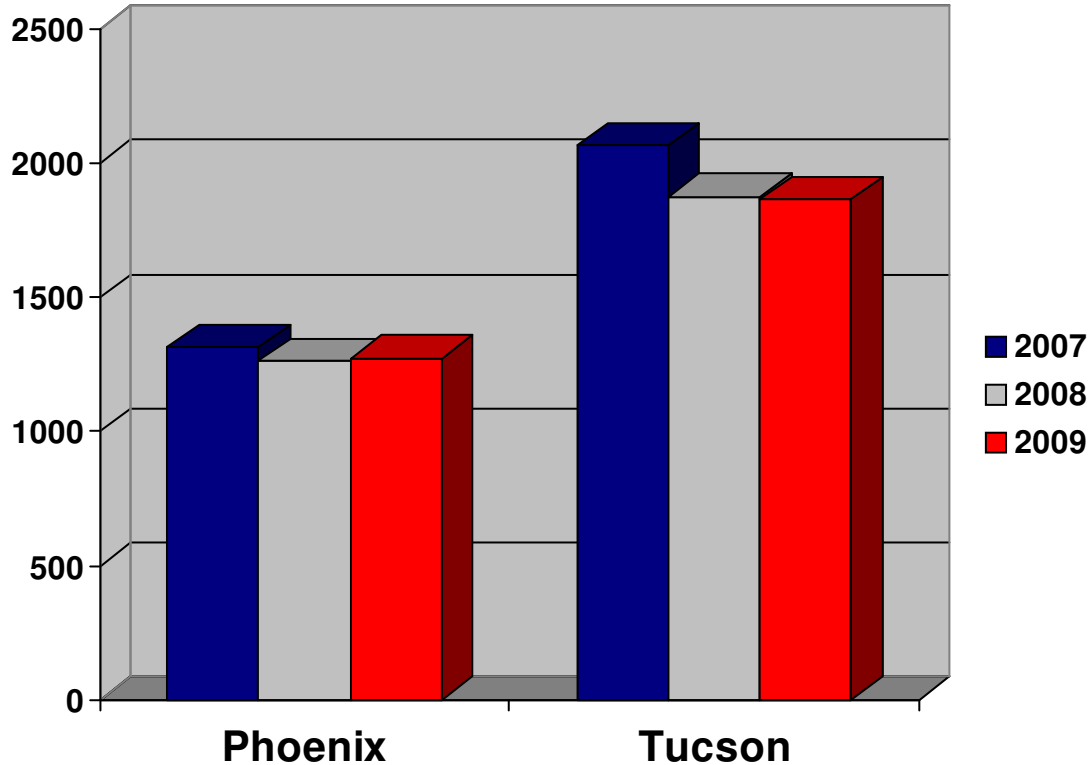


	FY2007	FY2008	FY2009	% Increase '08 to '09
Phoenix	1,799	1,790	1,947	8.77%
Tucson	3,431	2,555	3,237	26.69%
Dfts Total	5,230	4,345	5,184	19.3%

NOTE: Each termination is associated with a single defendant against whom criminal charges have been terminated. Criminal defendant terminations represents Felony defendants and Class A Misdemeanor defendants who consented to proceed before a Magistrate Judge. Data here are comparable to Table D-1 Defendants information published by the AO.

Divisional Caseload Statistics

Criminal Terminated Defendants Weighted*



	FY2007	FY2008	FY2009	% Increase '08 to '09
Phoenix	1,312	1,261	1,270	0.74%
Tucson	2,064	1,873	1,863	-0.57%
Dfts Total	3,376	3,134	3,133	0.0%

NOTE: Weighted defendant terminations differ from defendant terminations in general as they only include original proceedings, removals from state court, and transfers from other districts. All other defendant types (remands, reopens, retrials, reinstatements, etc) are excluded. When multiple criminal charges are terminated for a defendant, the most severe charge is counted for weighting purposes.

Divisional Caseload Statistics

Criminal Defendant Terminations by Major Case Type - Phoenix

	FY2007	FY2008	FY2009	% Increase '08 to '09
A - Marijuana	62	53	53	0.0%
B - All Other Drugs	219	154	151	-1.9%
C - Immigration	820	963	1,254	30.2%
D - Firearms and Explosives	155	109	94	-13.8%
E - Fraud	91	56	54	-3.6%
F - Violent Offenses	141	164	106	-35.4%
G - Sex Offenses	44	40	36	-10.0%
H - Forgery and Counterfeiting	2	2	7	250.0%
I - Larceny and Theft	55	42	41	-2.4%
J - Justice System Offenses	14	21	27	28.6%
K - Regulatory Offenses	34	19	19	0.0%
L - All Other Criminal Felony Cases	23	24	24	0.0%
Total	1,660	1,647	1,866	13.3%

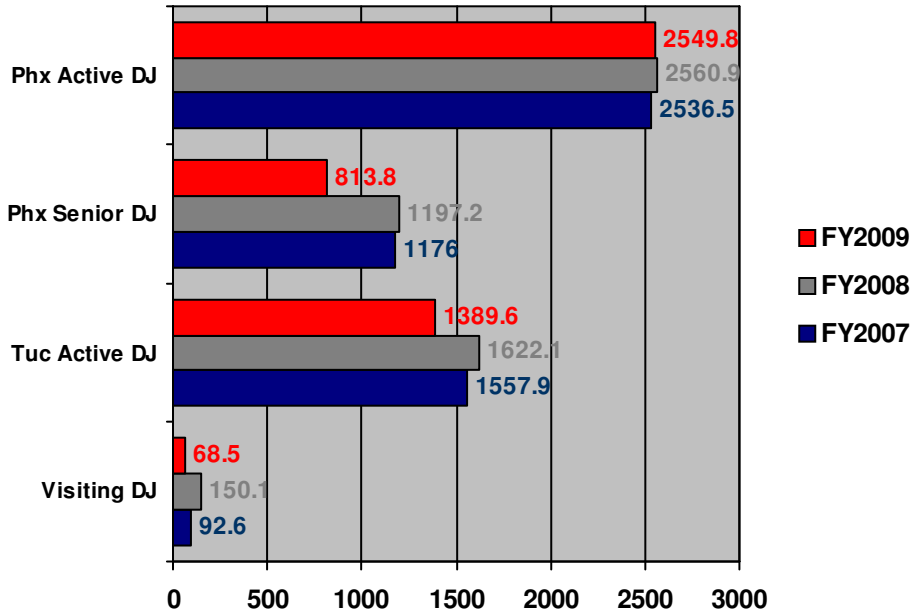
Criminal Defendant Terminations by Major Case Type - Tucson

	FY2007	FY2008	FY2009	% Increase '08 to '09
A - Marijuana	562	581	585	0.7%
B - All Other Drugs	194	195	173	-11.3%
C - Immigration	1,528	1,357	1,176	-13.3%
D - Firearms and Explosives	102	109	93	-14.7%
E - Fraud	67	47	32	-31.9%
F - Violent Offenses	35	41	33	-19.5%
G - Sex Offenses	6	21	26	23.8%
H - Forgery and Counterfeiting	4	10	3	-70.0%
I - Larceny and Theft	55	44	36	-18.2%
J - Justice System Offenses	18	13	22	69.2%
K - Regulatory Offenses	34	27	31	14.8%
L - All Other Criminal Felony Cases	38	29	21	-27.6%
Total	2,643	2,474	2,231	-9.8%

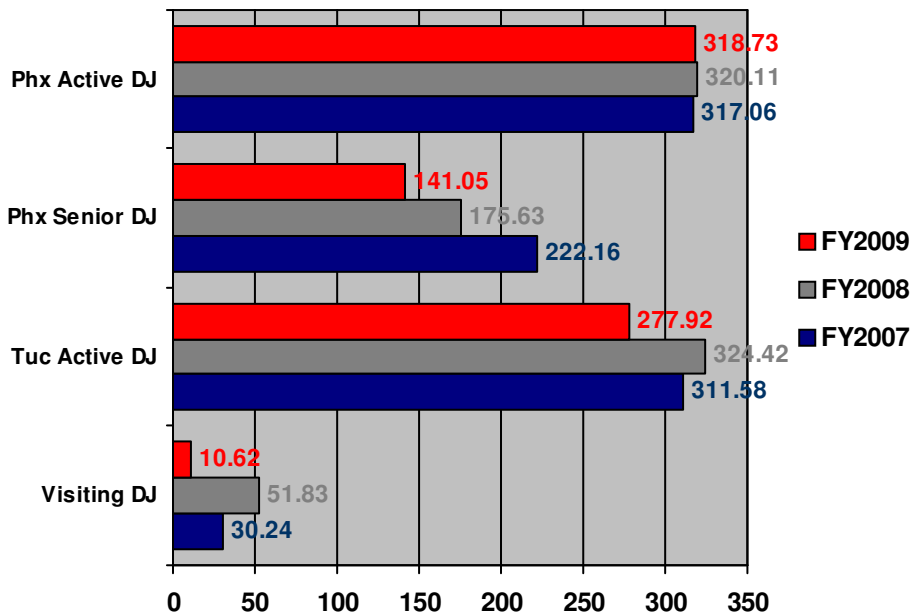
NOTE: A complete list of Offense Types used in each category can be found in Appendix B. Data here are comparable to Table D-4 Defendants information published by the AO. Misdemeanor terminations are excluded.

Divisional Workload Statistics

District Judge Time in Court (Yearly Total for All Judges)



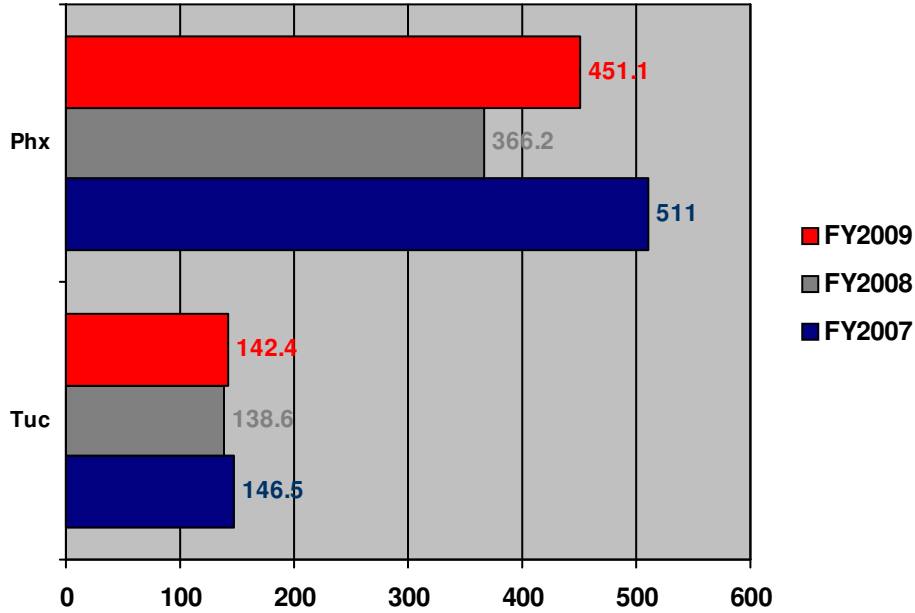
District Judge Time in Court (Yearly Avg Per Judge)



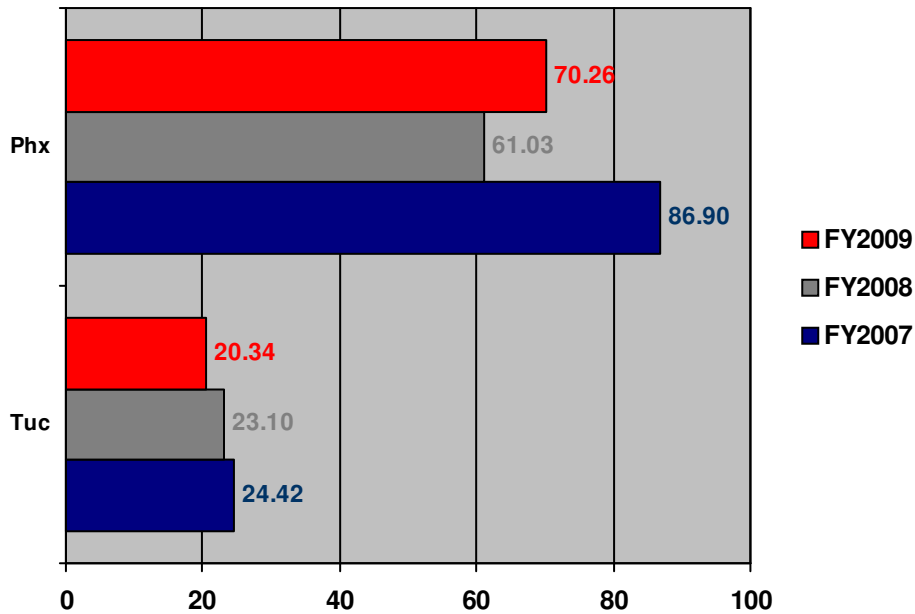
* In 2007, there were seven Visiting Judges. In 2008, there were eight Visiting Judges. In 2009, there were four Visiting Judges.

Divisional Workload Statistics

**Magistrate Judge Time in Court
(Civil Total for All Judges)**



**Magistrate Judge Time in Court
(Civil Avg Per Judge)**



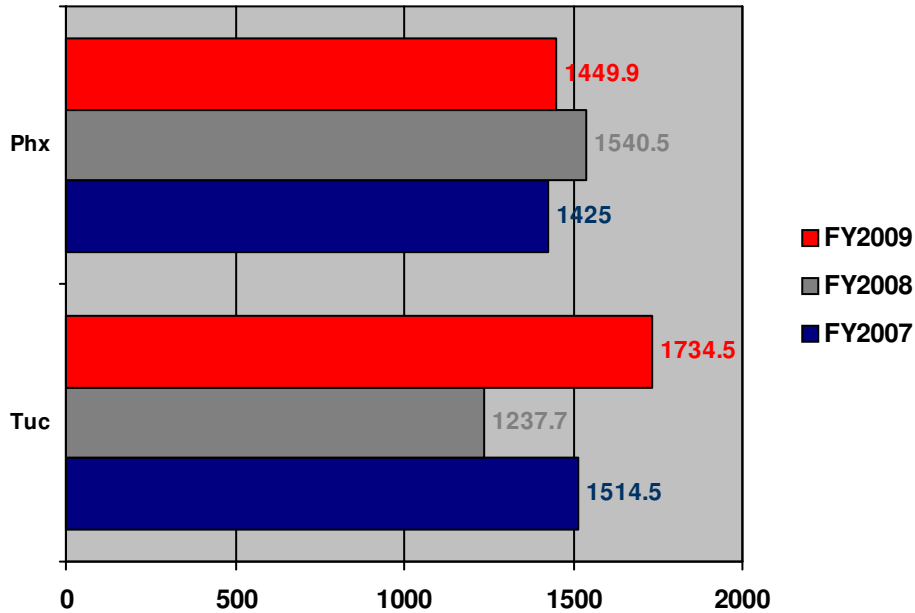
* In 2007, there were six MJs in Phoenix for ten months and five MJs for two months; six MJs in Tucson.

* In 2008, there were six MJs in Phoenix, six MJs in Tucson.

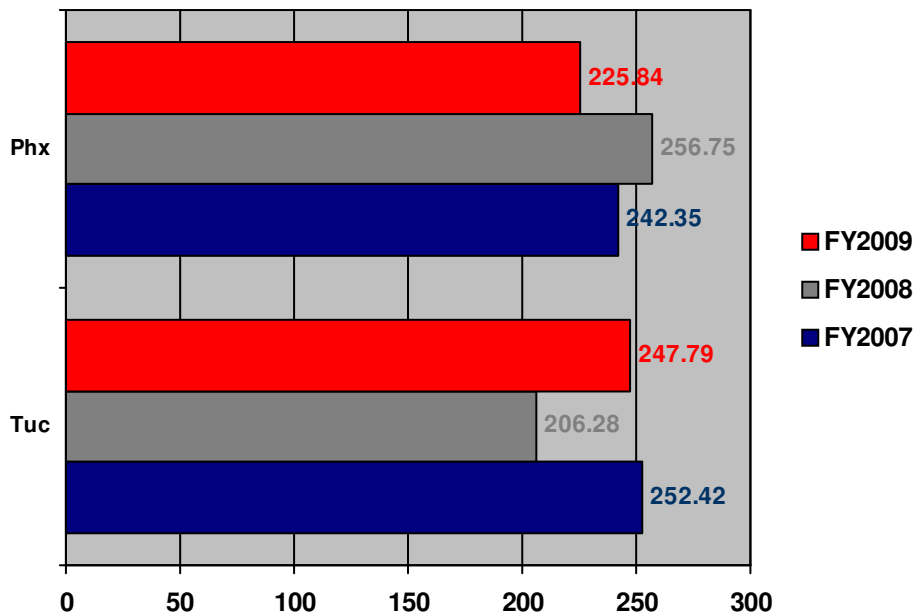
* In 2009, there were six MJs in Phoenix, one part-time magistrate for 5 months; six MJs in Tucson for three months and seven MJs for 9 months.

Divisional Workload Statistics

Magistrate Judge Time in Court (Criminal Total for All Judges)



Magistrate Judge Time in Court (Criminal Avg Per Judge)



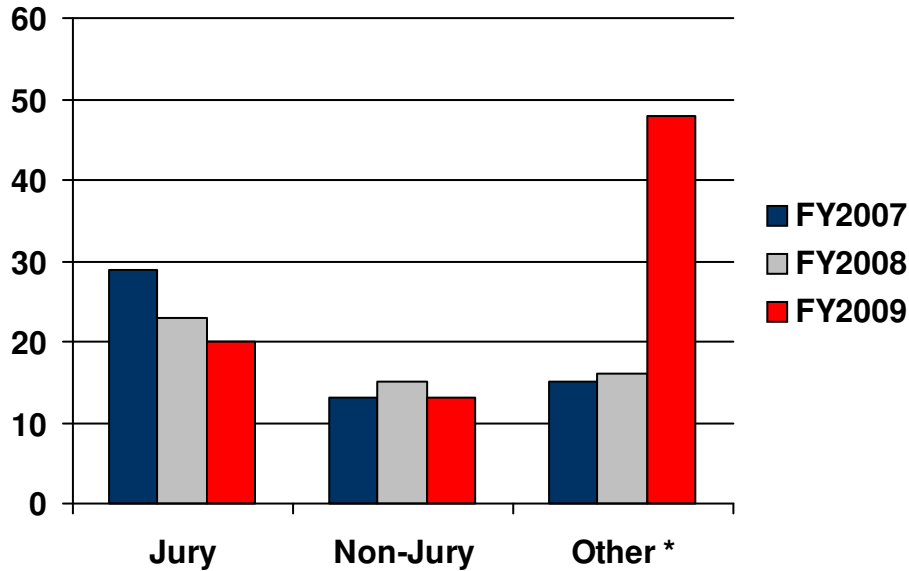
* In 2007, there were six MJs in Phoenix for ten months and five MJs for two months; six MJs in Tucson.

* In 2008, there were six MJs in Phoenix, six MJs in Tucson.

* In 2009, there were six MJs in Phoenix, one part-time magistrate for 5 months; six MJs in Tucson for three months and seven MJs for 9 months.

Divisional Workload Statistics

Total Civil Trials - Phoenix

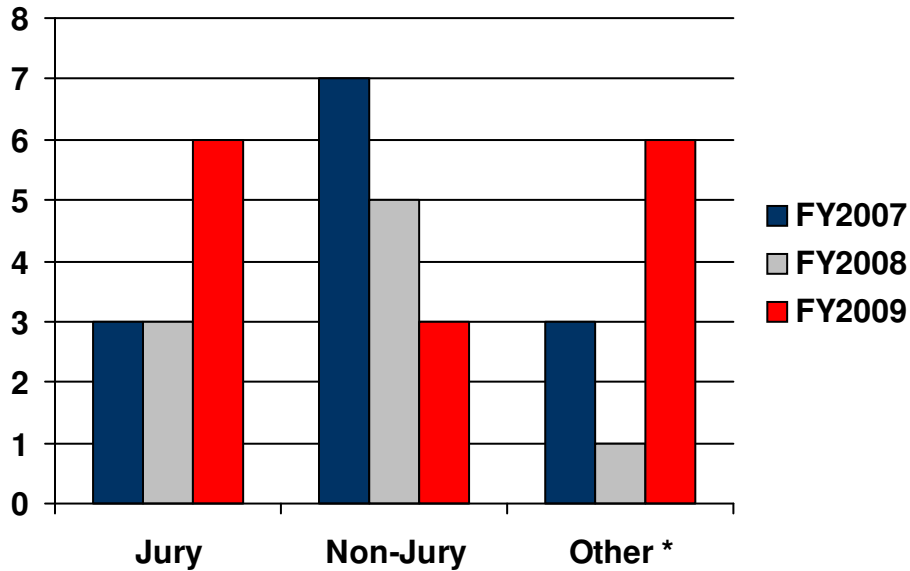


Trial Type	FY2007	FY2008	FY2009	% Increase '08 to '09
Jury	29	23	20	-13.0%
Non-Jury	13	15	13	-13.3%
Other *	15	16	48	200.0%
Civil Trial Totals	57	54	81	50.0%

NOTE: Data are attributed to the month in which the trial completes. "Other" trials includes contested hearings on motions for preliminary injunctions, temporary restraining orders, evidence, or other matters not resulting in a final judgment or verdict. Data here are comparable to Table T-1 Civil Trials information published by the AO.

Divisional Workload Statistics

Total Civil Trials - Tucson

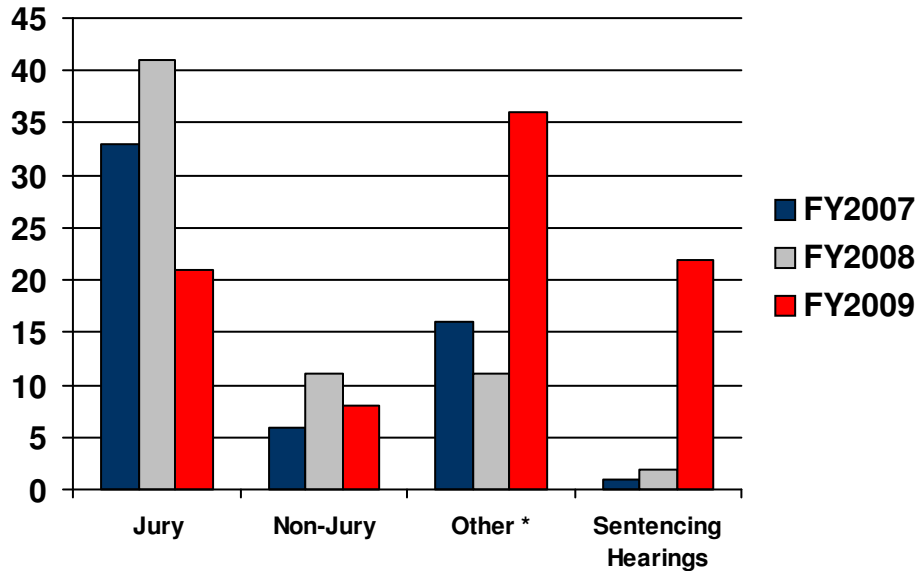


Trial Type	FY2007	FY2008	FY2009	% Increase '08 to '09
Jury	3	3	6	100.0%
Non-Jury	7	5	3	-40.0%
Other *	3	1	6	500.0%
Civil Trial Totals	13	9	15	66.7%

NOTE: Data are attributed to the month in which the trial completes. "Other" trials includes contested hearings on motions for preliminary injunctions, temporary restraining orders, evidence, or other matters not resulting in a final judgment or verdict. Data here are comparable to Table T-1 Civil Trials information published by the AO.

Divisional Workload Statistics

Total Criminal Trials - Phoenix

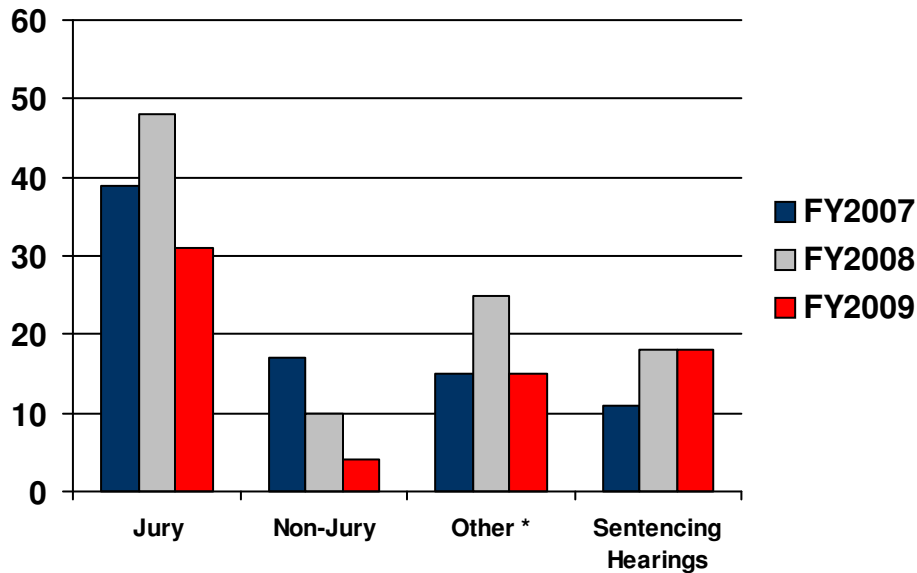


Trial Type	FY2007	FY2008	FY2009	% Increase '08 to '09
Jury	33	41	21	-48.8%
Non-Jury	6	11	8	-27.3%
Other *	15	11	31	181.8%
Sentencing Hearing	1	2	22	1000.0%
Criminal Trial Totals	55	65	82	26.2%

NOTE: Data are attributed to the month in which the trial completes. "Other" trials includes contested hearings on motions for preliminary injunctions, temporary restraining orders, evidence, or other matters not resulting in a final judgment or verdict. Data here are comparable to Table T-1 Criminal Trials information published by the AO.

Divisional Workload Statistics

Total Criminal Trials - Tucson

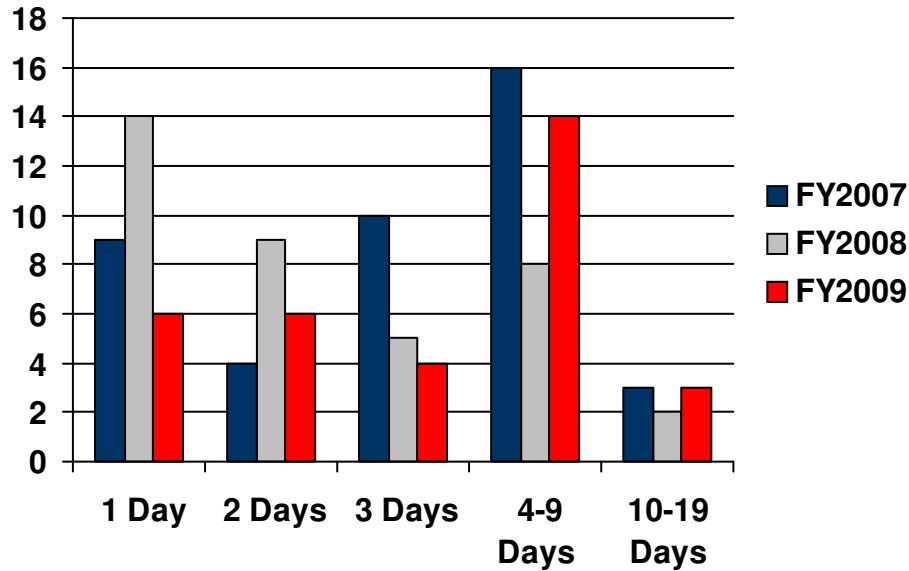


Trial Type	FY2007	FY2008	FY2009	% Increase '08 to '09
Jury	39	48	31	-35.4%
Non-Jury	17	10	4	-60.0%
Other *	15	25	13	-48.0%
Sentencing Hearing	11	18	18	0.0%
Criminal Trial Totals	82	101	66	-34.7%

NOTE: Data are attributed to the month in which the trial completes. "Other" trials includes contested hearings on motions for preliminary injunctions, temporary restraining orders, evidence, or other matters not resulting in a final judgment or verdict. Data here are comparable to Table T-1 Criminal Trials information published by the AO.

Divisional Workload Statistics

Length of Civil Trials - Phoenix

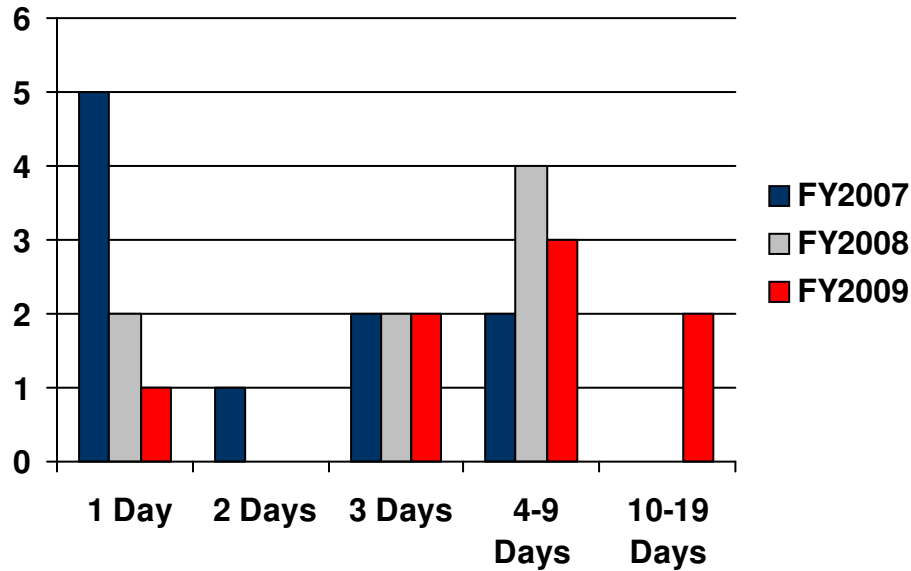


	FY2007	FY2008	FY2009	% Increase '08 to '09
1 Day	9	14	6	-57.1%
2 Days	4	9	6	-33.3%
3 Days	10	5	4	-20.0%
4-9 Days	16	8	14	75.0%
10-19 Days	3	2	3	50.0%
Trial Days Totals	42	38	33	-13.2%

Note: includes trials conducted by district and appellate judges only. All trials conducted by magistrate judges are excluded. Excludes hearings on temporary restraining orders and preliminary injunctions, hearings on contested motions, and other contested proceedings not resulting in a verdict or judgment. Only includes Non-Jury and Jury trials. Data here are comparable to Table T-2 Trial Lengths information published by the AO.

Divisional Workload Statistics

Length of Civil Trials - Tucson

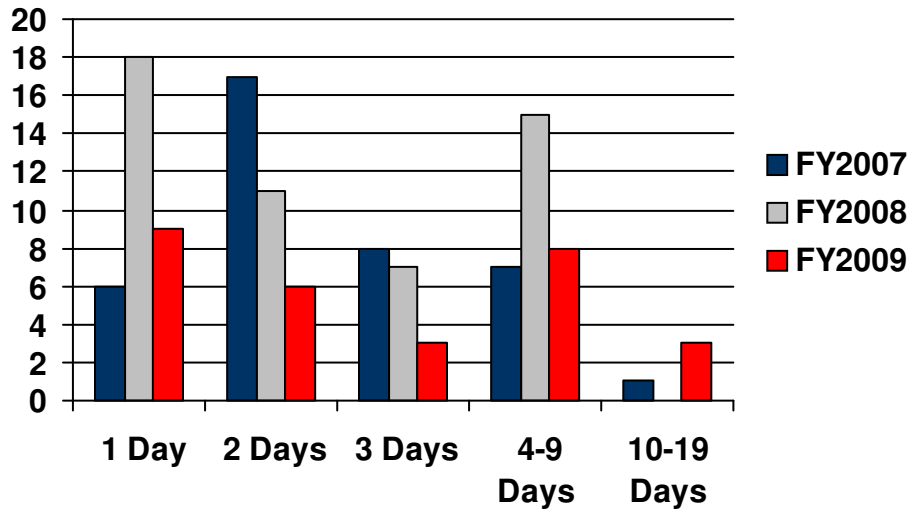


	FY2007	FY2008	FY2009	% Increase '08 to '09
1 Day	5	2	1	-50.0%
2 Days	1	0	0	0.0%
3 Days	2	2	2	0.0%
4-9 Days	2	4	3	-25.0%
10-19 Days	0	0	2	100.0%
Trial Days Totals	10	8	8	0.0%

Note: includes trials conducted by district and appellate judges only. All trials conducted by magistrate judges are excluded. Excludes hearings on temporary restraining orders and preliminary injunctions, hearings on contested motions, and other contested proceedings not resulting in a verdict or judgment. Only includes Non-Jury and Jury trials. Data here are comparable to Table T-2 Trial Lengths information published by the AO.

Divisional Workload Statistics

Length of Criminal Trials - Phoenix

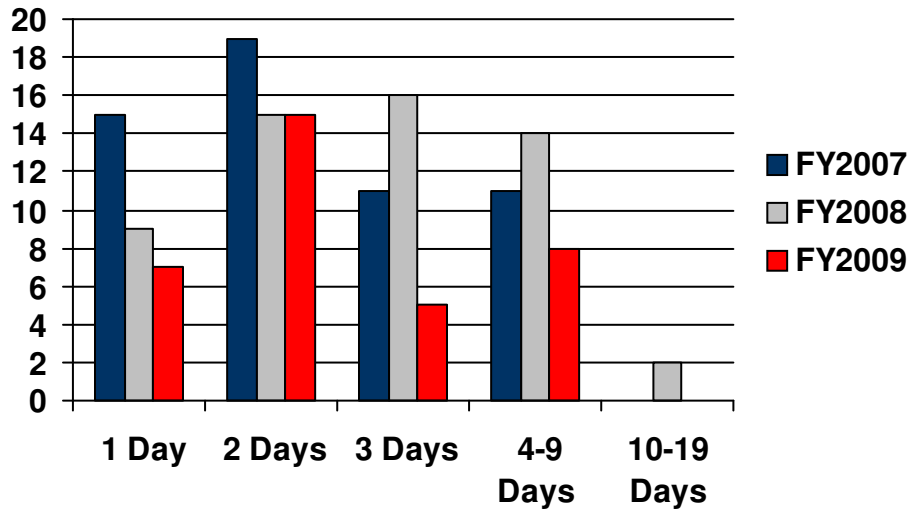


	FY2007	FY2008	FY2009	% Increase '08 to '09
1 Day	6	18	9	-50.0%
2 Days	17	11	6	-45.5%
3 Days	8	7	3	-57.1%
4-9 Days	7	15	8	-46.7%
10-19 Days	1	0	3	100.0%
Trial Days Totals	39	51	29	-43.1%

Note: includes trials conducted by district and appellate judges only. All trials conducted by magistrate judges are excluded. Excludes hearings on supervised release proceedings, probation revocation proceedings, hearings on contested motions, and other contested proceedings not resulting in a verdict or judgment. Only includes Non-Jury and Jury trials. Data here are comparable to Table T-2 Trial Lengths information published by the AO.

Divisional Workload Statistics

Length of Criminal Trials - Tucson

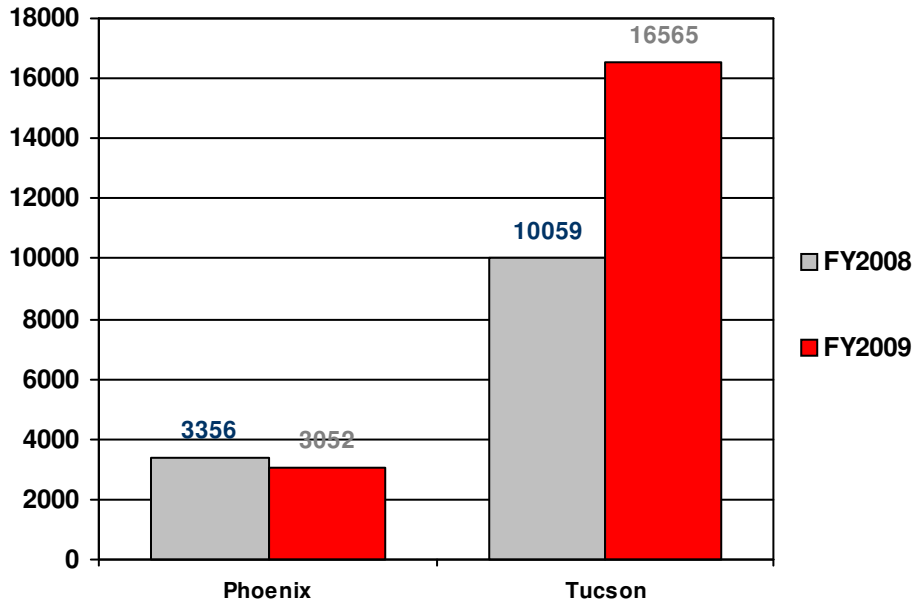


	FY2007	FY2008	FY2009	% Increase '08 to '09
1 Day	15	9	7	-22.2%
2 Days	19	15	15	0.0%
3 Days	11	16	5	-68.8%
4-9 Days	11	14	8	-42.9%
10-19 Days	0	2	0	-100.0%
Trial Days Totals	56	56	35	-37.5%

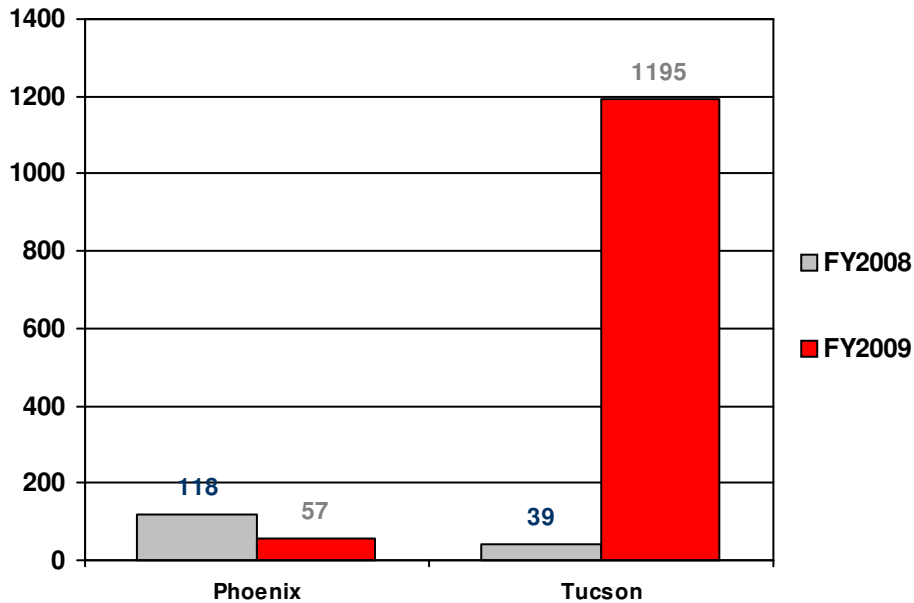
Note: includes trials conducted by district and appellate judges only. All trials conducted by magistrate judges are excluded. Excludes hearings on supervised release proceedings, probation revocation proceedings, hearings on contested motions, and other contested proceedings not resulting in a verdict or judgment. Only includes Non-Jury and Jury trials. Data here are comparable to Table T-2 Trial Lengths information published by the AO.

Divisional Workload Statistics

Magistrate Judge Petty Offense Dispositions



Magistrate Judge Misdemeanor Dispositions



NOTE: Misdemeanor dispositions are Class A Misdemeanor cases where defendant(s) consented to proceed before a Magistrate Judge. Petty dispositions do not include CVB dispositions. Data here are comparable to Table M-1a and M-2a Defendants Disposed information published by the AO.

Divisional Workload Statistics

Petty Offense Dispositions by Type - Phoenix

	FY2008	FY2009	% Increase '08 to '09
Alcohol	48	43	-10.4%
Assault	10	12	20.0%
Camping	5	10	100.0%
DestroyProp	3	2	-33.3%
Disorderly	17	21	23.5%
Drugs	2	10	400.0%
DwiDui	55	60	9.1%
Fraud	1	2	100.0%
HuntFish	6	1	-83.3%
Immigration	2,124	2,451	15.4%
Other	19	26	36.8%
OtherTraffic	24	34	41.7%
Theft	2	5	150.0%
Timber	0	4	100.0%
Trespass	1	5	400.0%
Weapons	4	0	-100.0%
Total	2,321	2,686	15.7%

Petty Offense Dispositions by Type - Tucson

	FY2008	FY2009	% Increase '08 to '09
Alcohol	0	1	100.0%
Assault	1	4	300.0%
Camping	1	6	500.0%
DestroyProp	0	0	0.0%
Disorderly	1	0	-100.0%
Drugs	2	5	150.0%
DwiDui	15	10	-33.3%
Fraud	4	5	25.0%
HuntFish	19	37	94.7%
Immigration	9,961	16,471	65.4%
Other	16	9	-43.8%
OtherTraffic	14	13	-7.1%
Theft	1	0	-100.0%
Timber	1	0	-100.0%
Trespass	2	2	0.0%
Weapons	0	0	0.0%
Total	10,038	16,563	65.0%

Divisional Workload Statistics

Misdemeanor Dispositions by Type - Phoenix

	FY2008	FY2009	% Increase '08 to '09
Misd Assault	4	1	-75.0%
Misd Drugs	0	0	0.0%
Misd Fraud	37	29	-21.6%
Misd Mail	1	1	0.0%
Misd Other	40	11	-72.5%
Misd Theft	2	9	350.0%
Misd Traffic	2	1	-50.0%
Misd Trespass	1	0	-100.0%
Misd Weapons	0	1	100.0%
Total	87	53	-39.1%

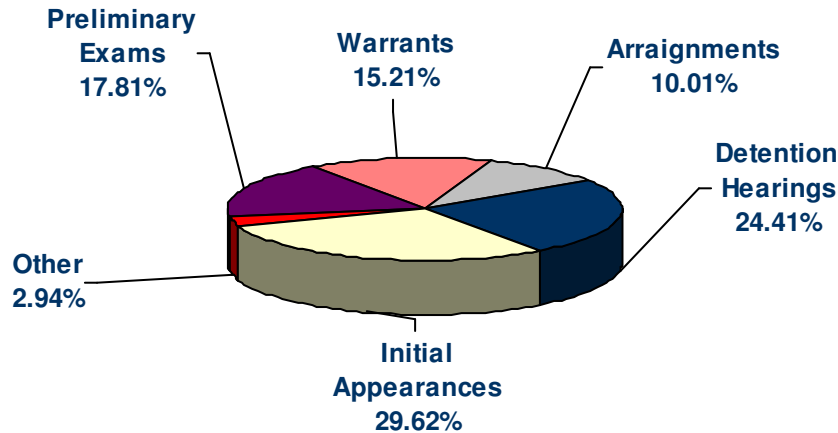
Misdemeanor Dispositions by Type - Tucson

	FY2008	FY2009	% Increase '08 to '09
Misd Assault	2	2	0.0%
Misd Drugs	0	0	0.0%
Misd Fraud	5	991	19720.0%
Misd Mail	4	5	25.0%
Misd Other	10	196	1860.0%
Misd Theft	3	0	-100.0%
Misd Traffic	2	1	-50.0%
Misd Trespass	1	0	-100.0%
Misd Weapons	0	0	0.0%
Total	27	1,195	4325.9%

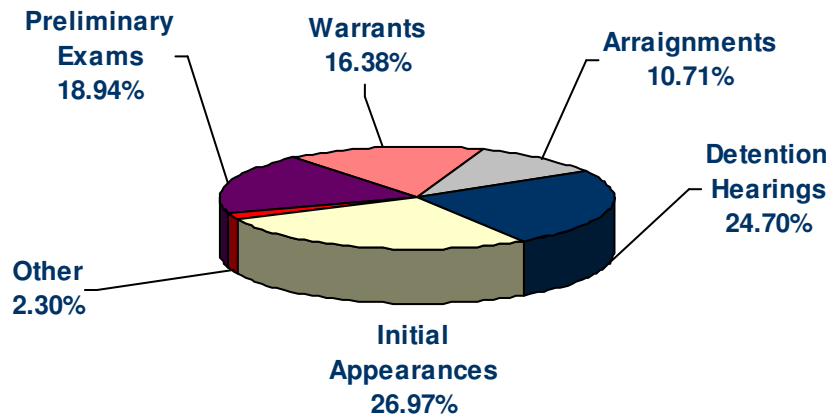
NOTE: Misdemeanor dispositions are Class A Misdemeanor cases where defendant(s) consented to proceed before a Magistrate Judge. Data here are comparable to Table M-1 Defendants Disposed information published by the AO. Petty Dispositions on prior page are all convictions in Petty Offense cases excluding CVB cases. Data there are comparable to Table M-2 Defendants Disposed information published by the AO.

Divisional Workload Statistics

MJ Preliminary Proceedings Under U.S. 28 § 636(a) FY2008 Phoenix Division



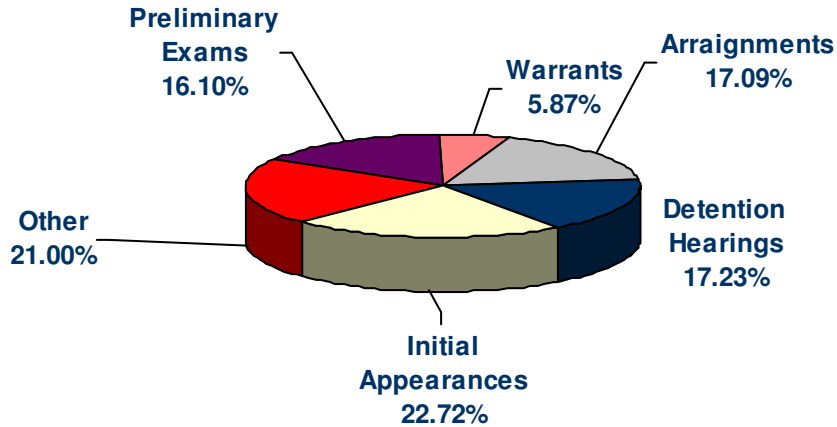
MJ Preliminary Proceedings Under U.S. 28 § 636(a) FY2009 Phoenix Division



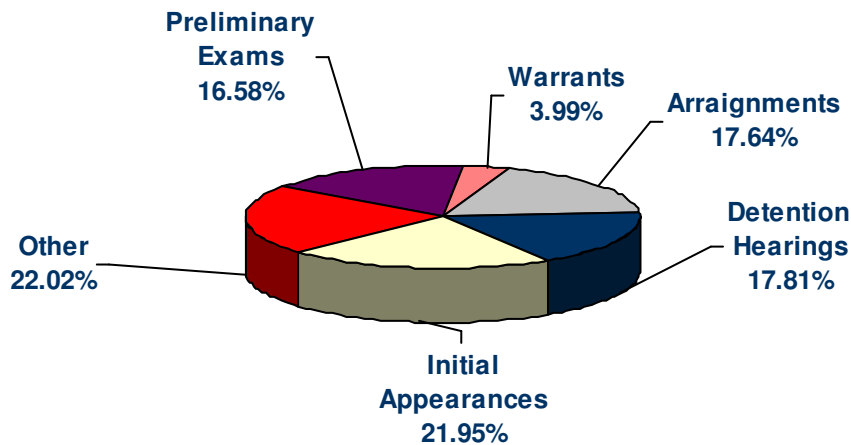
NOTE: Other category includes: attorney appointment, material witness, and bail review/nebbia hearings. Data here are comparable to Table M-3 Preliminary Proceeding information published by the AO.

Divisional Workload Statistics

MJ Preliminary Proceedings Under U.S. 28 § 636(a) FY2008 Tucson Division



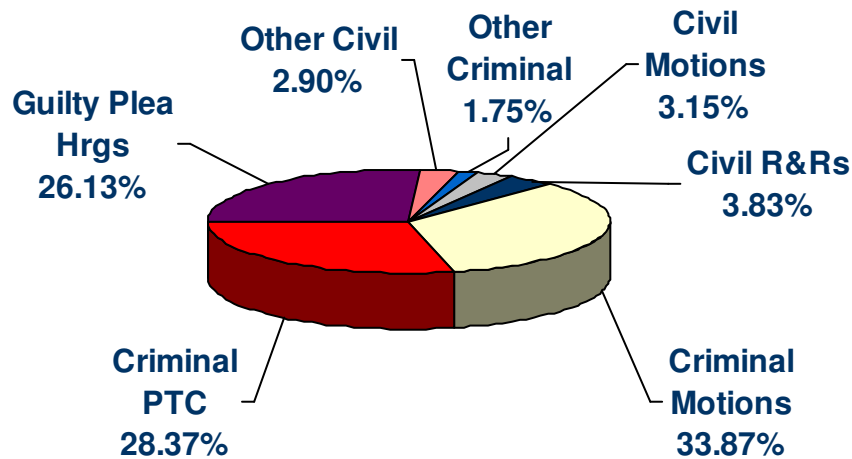
MJ Preliminary Proceedings Under U.S. 28 § 636(a) FY2009 Tucson Division



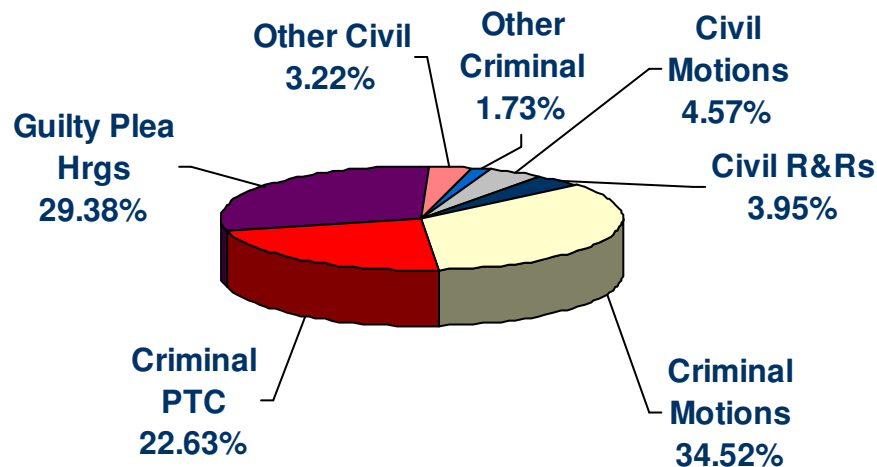
NOTE: Other category includes: attorney appointment, material witness, and bail review/nebbia hearings. Data here are comparable to Table M-3 Preliminary Proceeding information published by the AO.

Divisional Workload Statistics

MJ DUTIES UNDER U.S. 28 § 636(b) - FY2008 Phoenix



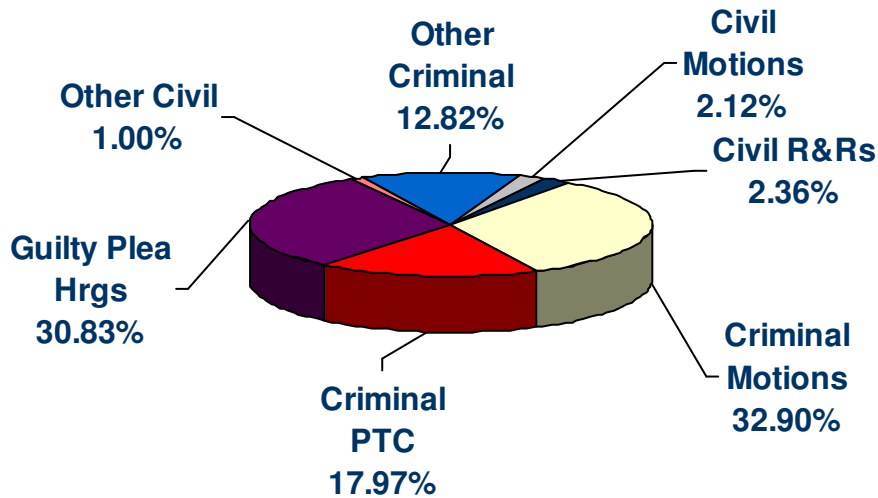
MJ DUTIES UNDER U.S. 28 § 636(b) - FY2009 Phoenix



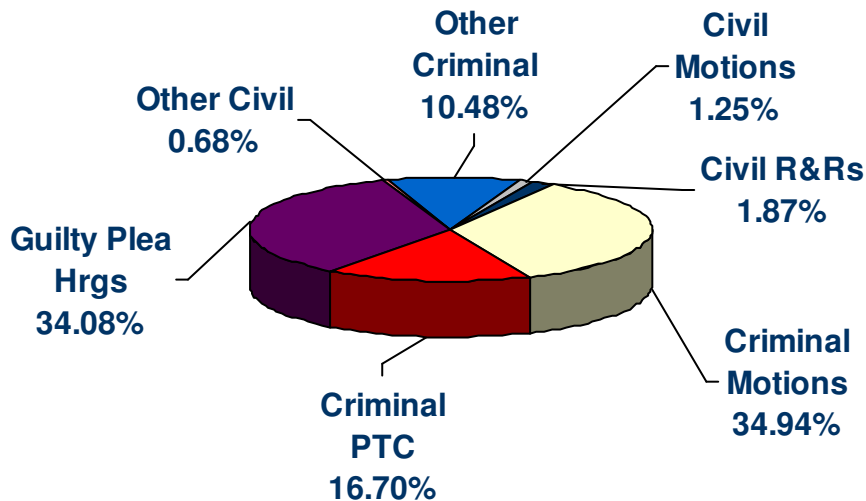
Other Criminal includes: supervised release, mental competency, evidentiary, motion, probation revocation hearings and writs. Other Civil includes: non-consent settlement conferences, pretrial conferences, evidentiary hearings, motion hearings, and fee applications. Data here are comparable to Table M-4 and M-4a Matters Handled by Magstration Judges information published by the AO.

Divisional Workload Statistics

MJ DUTIES UNDER U.S. 28 § 636(b) - FY2008 Tucson



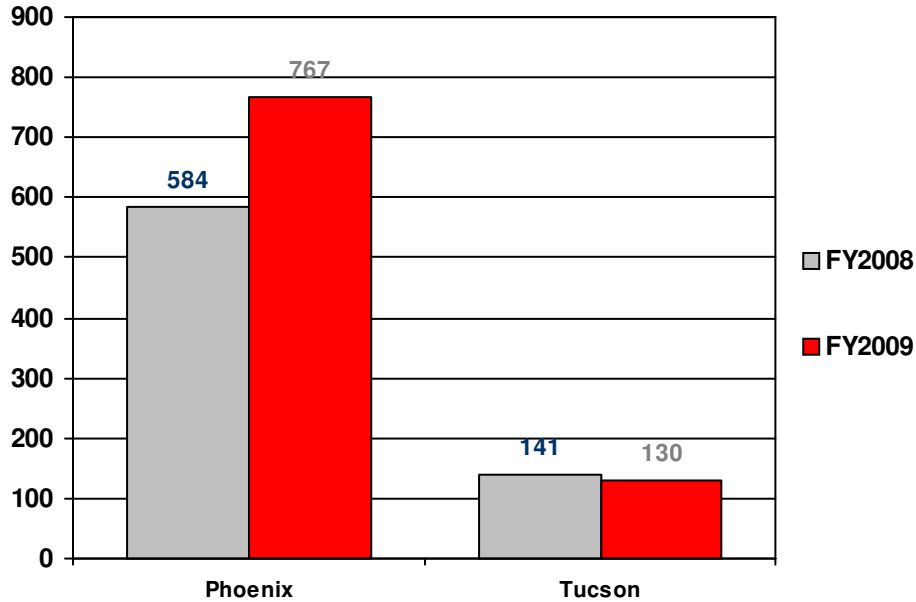
MJ DUTIES UNDER U.S. 28 § 636(b) - FY2009 Tucson



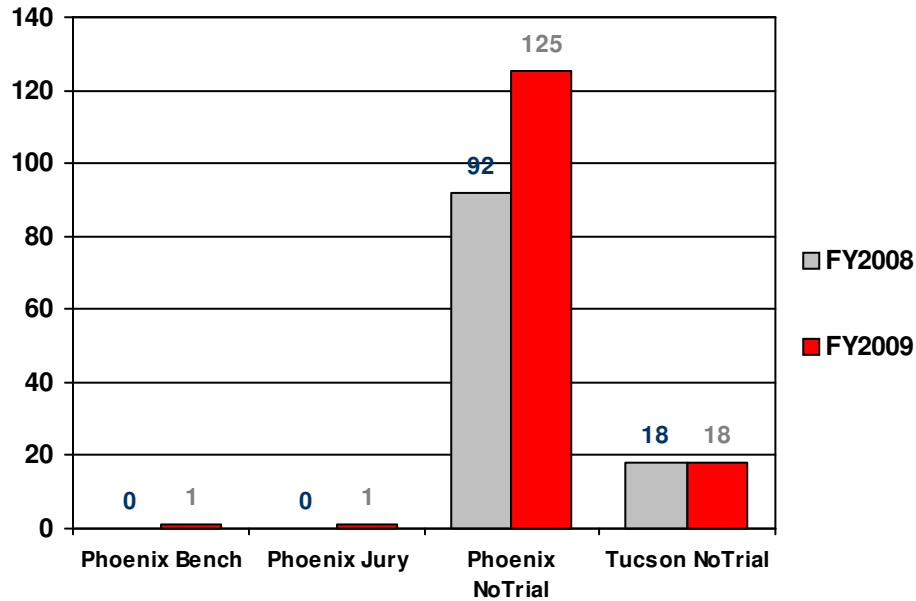
Other Criminal includes: supervised release, mental competency, evidentiary, motion, probation revocation hearings and writs. Other Civil includes: non-consent settlement conferences, pretrial conferences, evidentiary hearings, motion hearings, and fee applications. Data here are comparable to Table M-4 and M-4a Matters Handled by Magstration Judges information published by the AO.

Divisional Workload Statistics

Magistrate Judge Orders Issued in Consent Cases



Magistrate Judge Consent Case Disposition Type

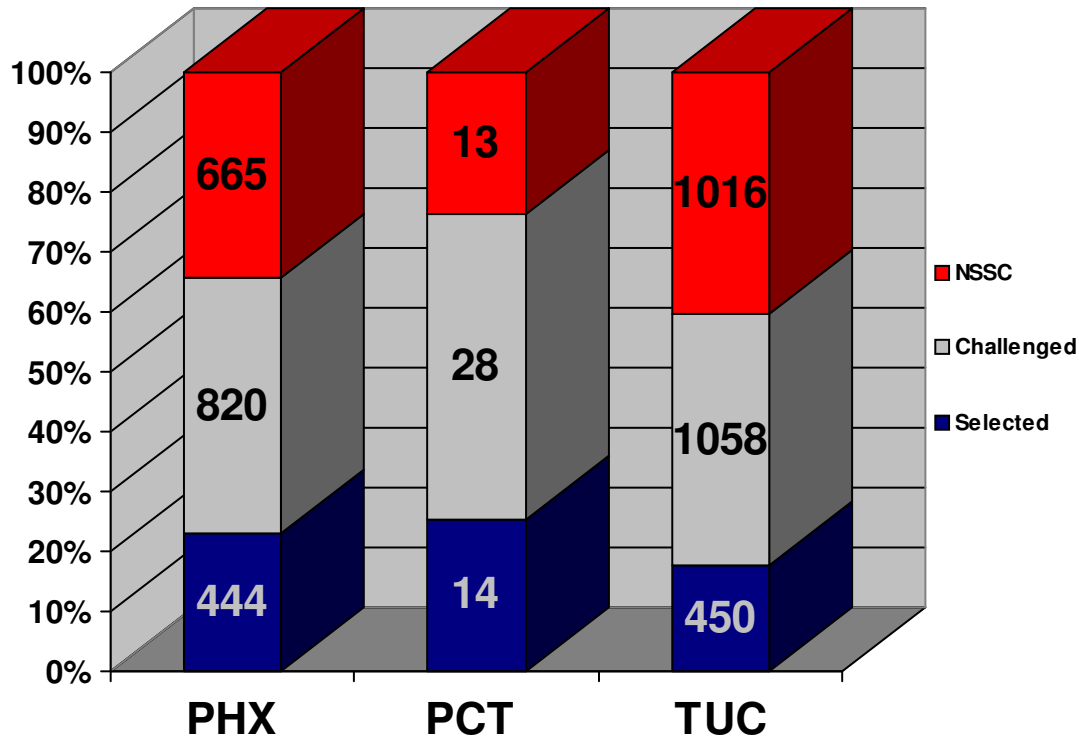


Data here are comparable to Table M-5 Civil Cases Terminated information published by the AO.

Jury Services Statistics

Jury Services Statistics

DISTRICT JURY PANEL UTILIZATION FY 2009

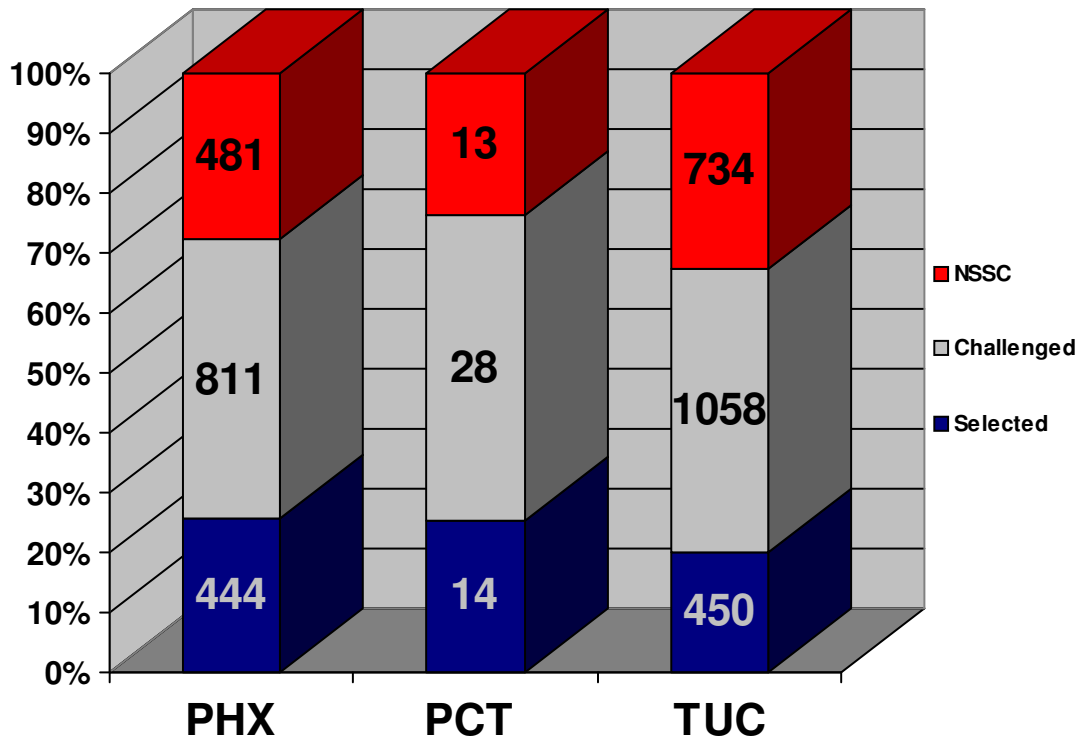


	Total Jurors	Selected	Challenged	NSSC
PHX	1,929	444	820	665
PCT	55	14	28	13
TUC	2,524	450	1,058	1,016
Total	4,508	908	1,906	1,694

NOTE: These numbers include all information submitted to the Administrative Office with regards to Jury Utilization.

Jury Services Statistics

DISTRICT JURY PANEL UTILIZATION ADJUSTED FIGURES* FY 2009

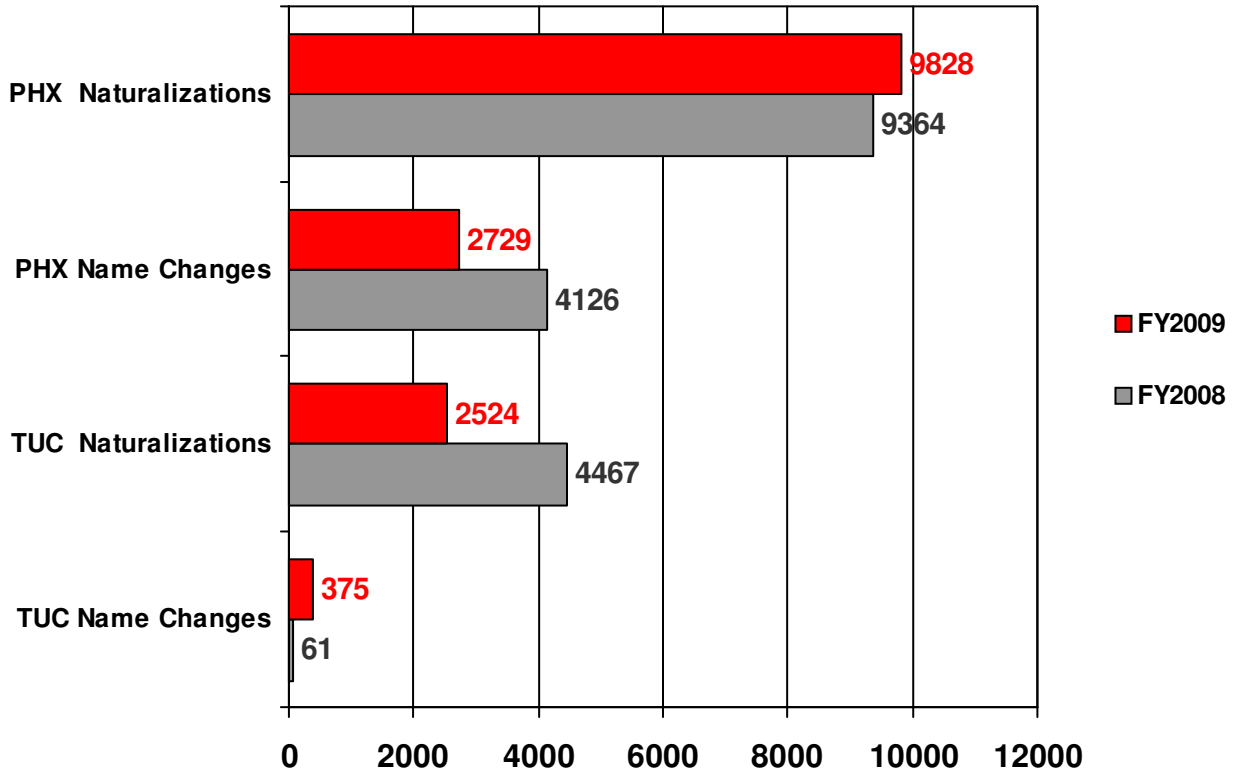


	Total Jurors	Selected	Challenged	NSSC
PHX	1,736	444	811	481
PCT	55	14	28	13
TUC	2,242	450	1,058	734
Total	4,033	908	1,897	1,228

NOTE: The purpose of this chart is to exclude trials that unavoidably but adversely impact utilization figures. Trials that plea/settle the day of jury selection or that take multiple days for voir dire are examples of such situations. By excluding the trials that plea/settle and combining multiple day jury selection into one day, a more realistic picture of utilization statistics emerges. Therefore, these totals are adjusted to exclude trials that plea the morning of jury selection and to treat multiple day selections as one day.

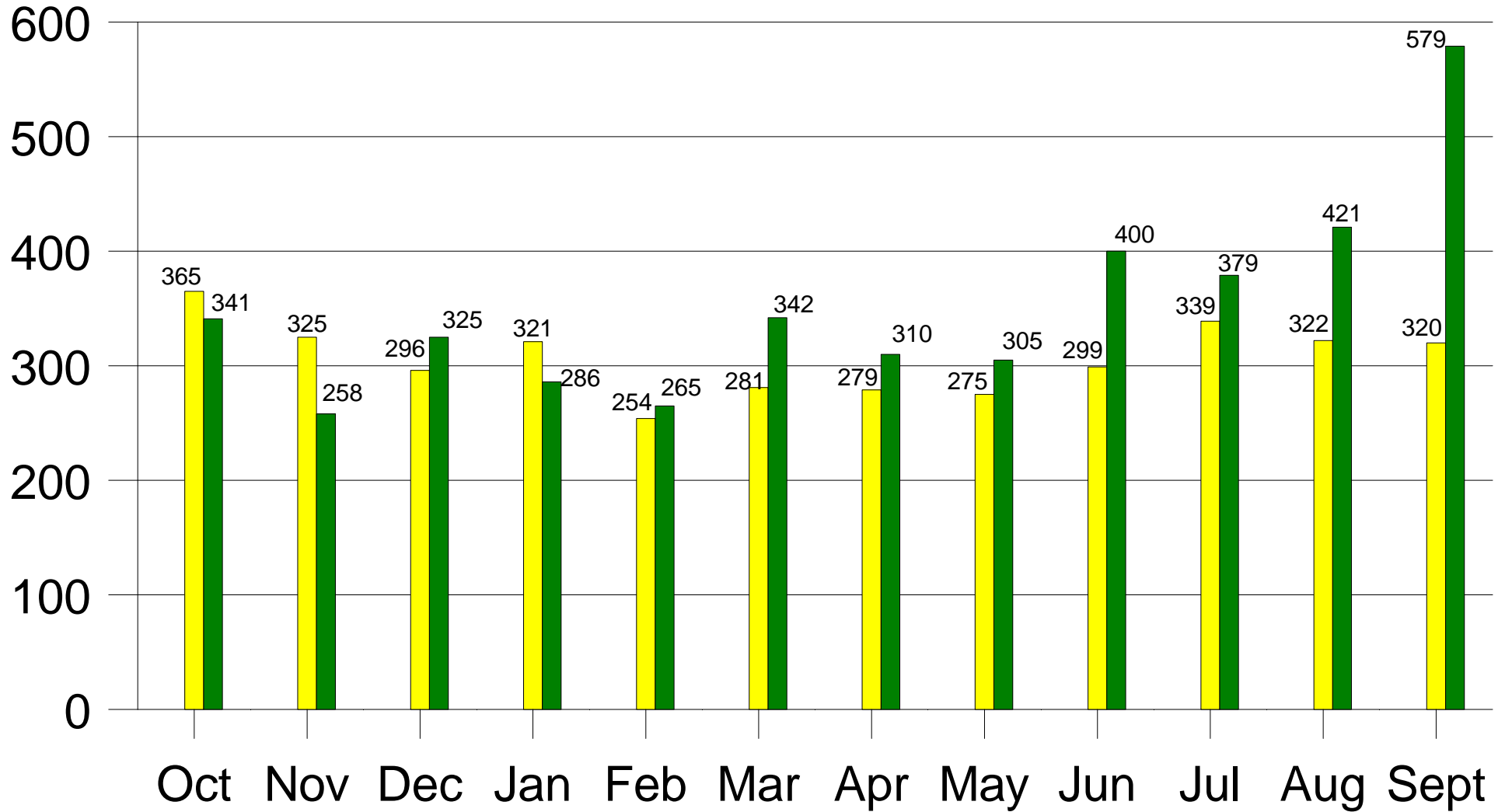
Jury Services Statistics

Persons Naturalizations and Name Changes Granted



Probation Statistics

District of Arizona Presentence Report Completions



FY 08

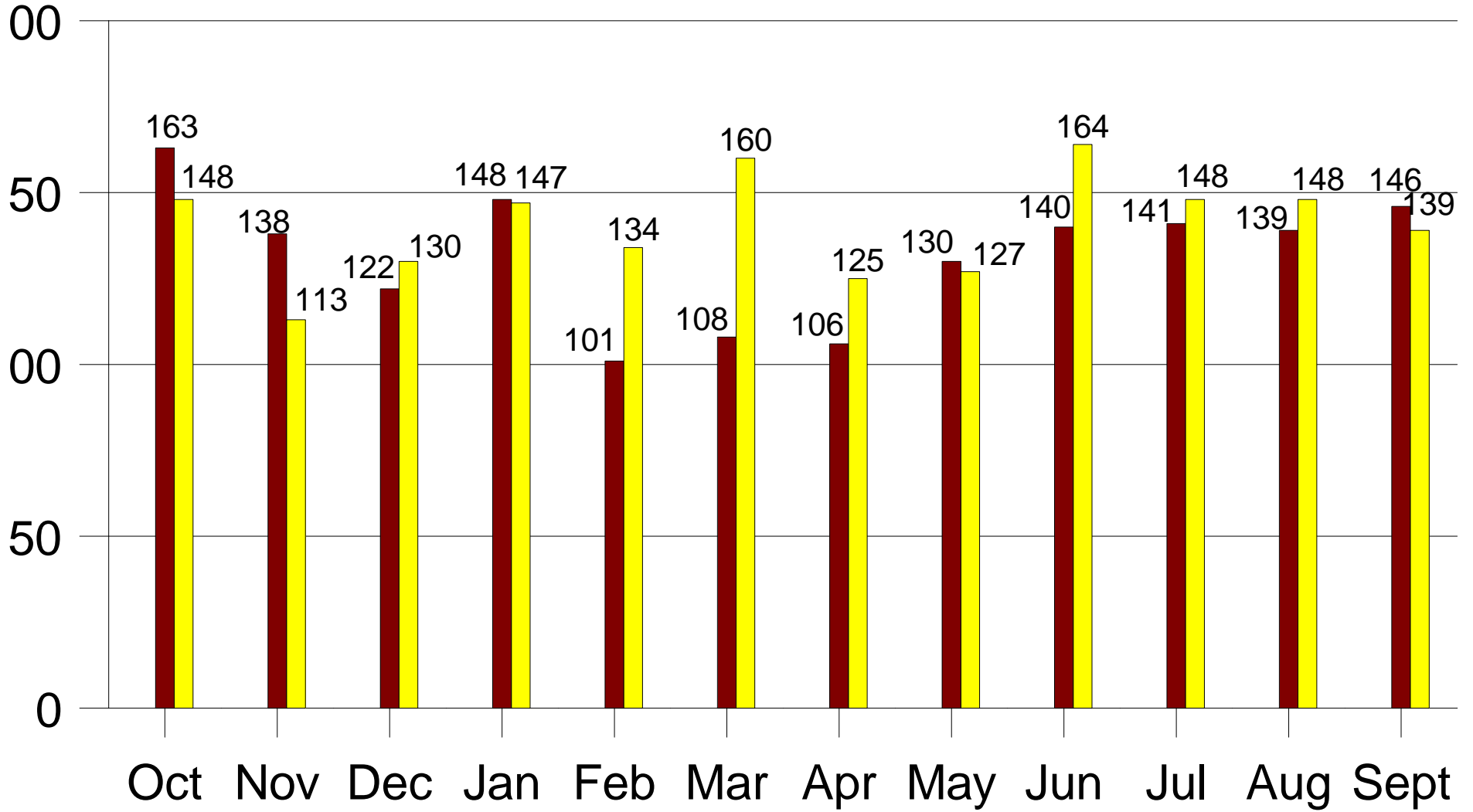
3676



FY 09

4211

Phoenix PSRs Completed



FY 08

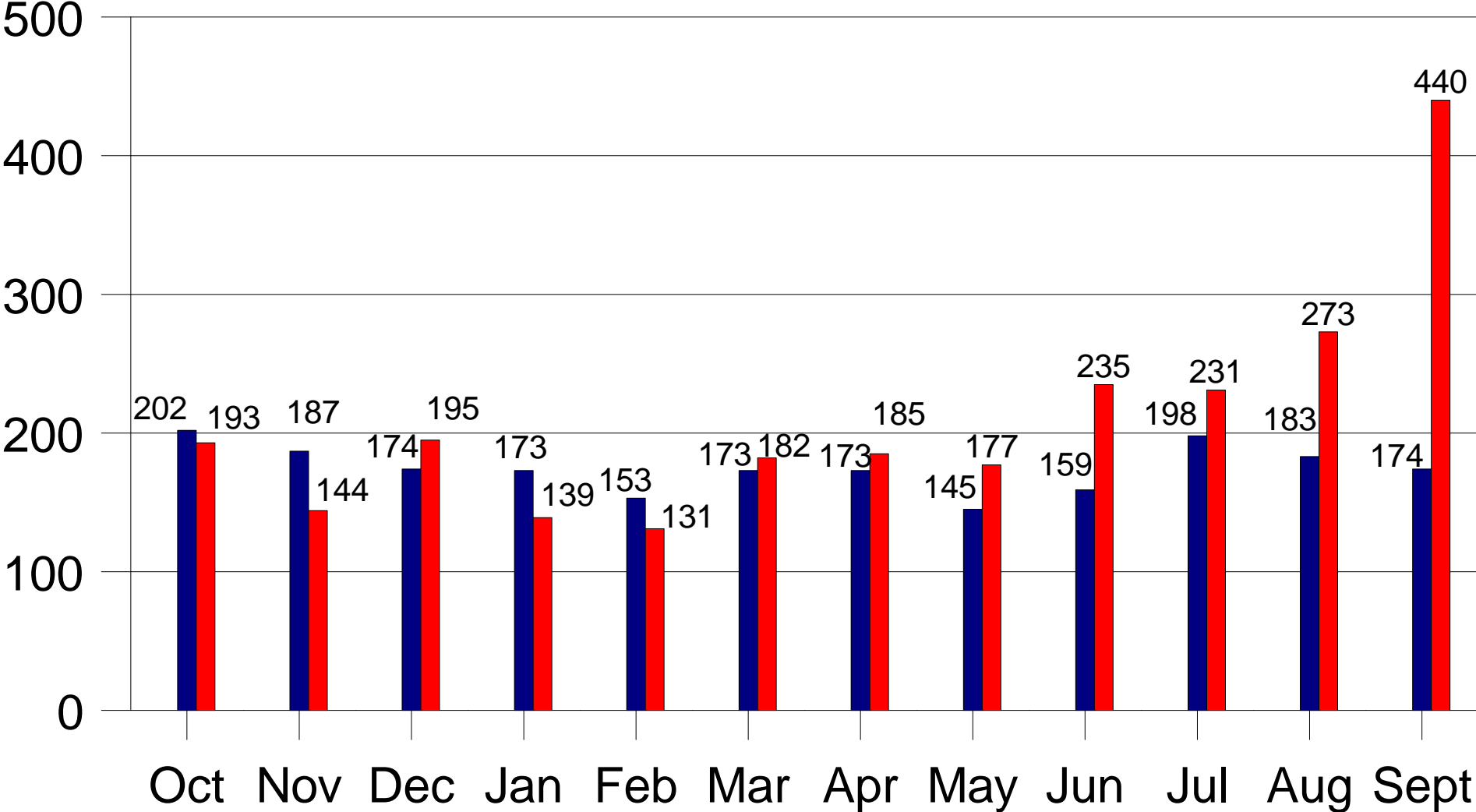
1581



FY 09

1683

Tucson PSRs Completed



FY 08

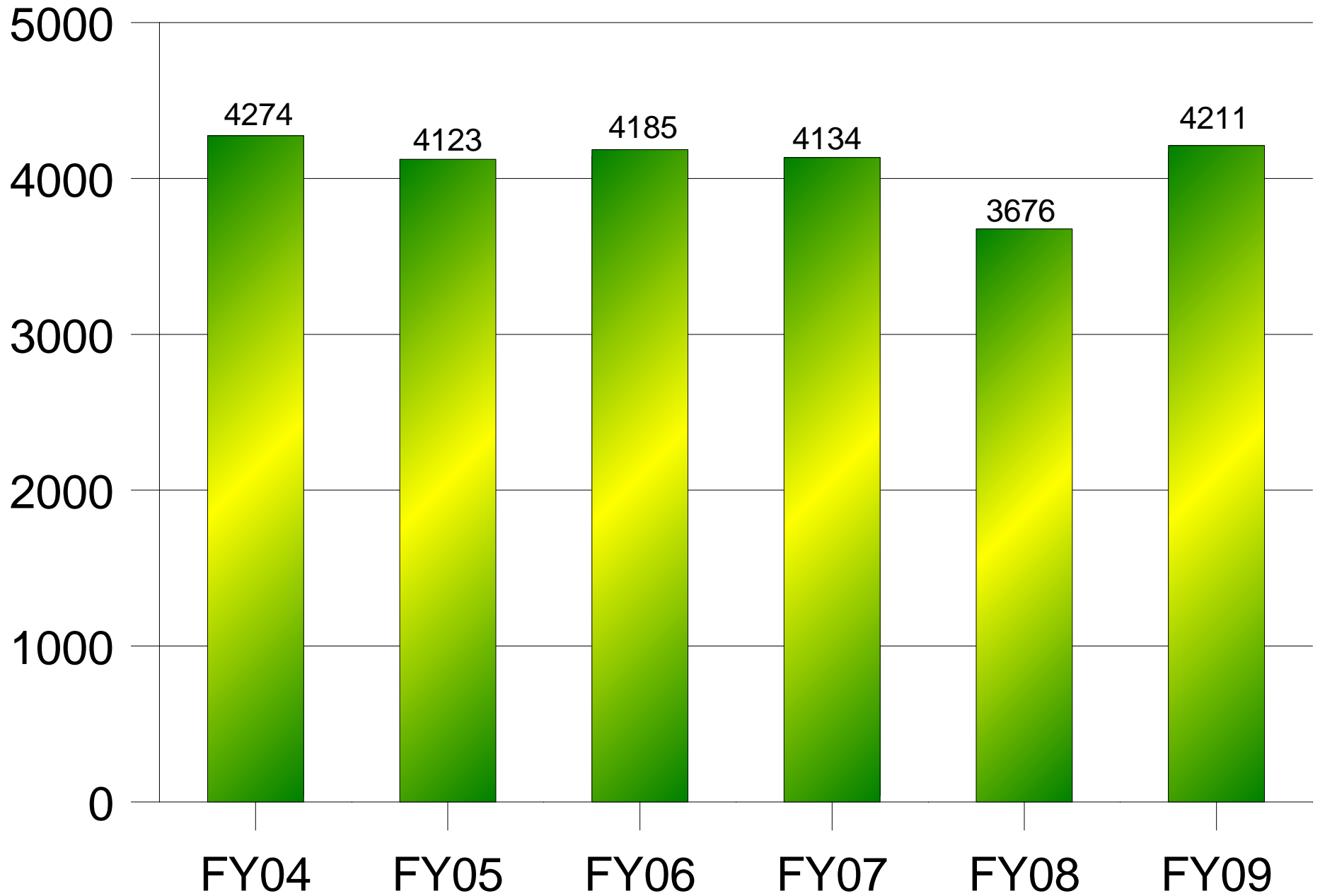
2095



FY 09

2525

Presentence Reports Completed



District's Supervision Caseload 2009

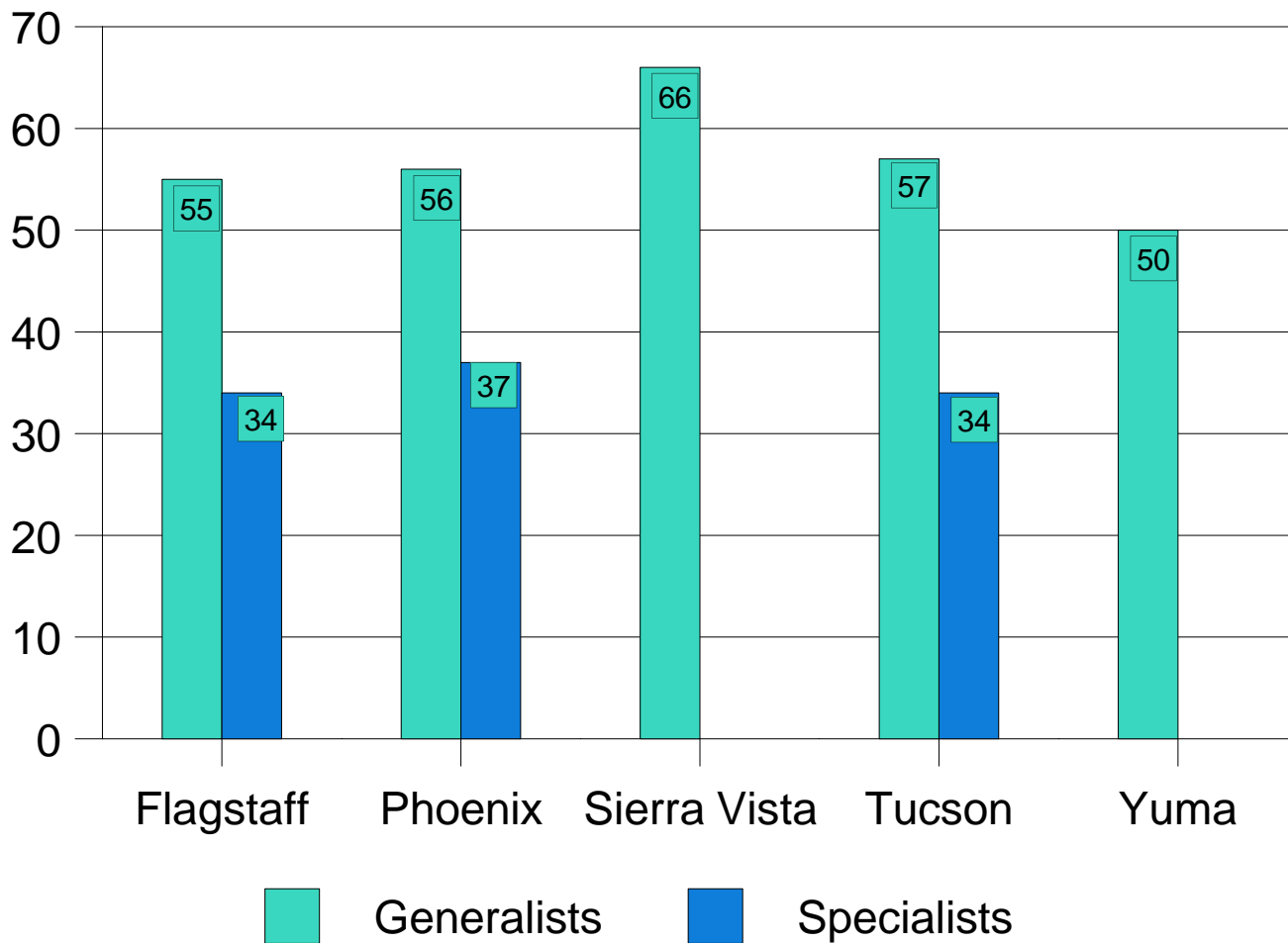
October 2008	3167
October 2009	<u>3231</u>
Net Increase	64

Supervision Workload for Fiscal Year 2009

Activated Cases

	1st Qtr	2nd Qtr	3rd Qtr	4th Qtr	Total
Flagstaff	66	62	54	46	228
Phoenix	179	196	213	198	786
Sierra Vista	15	23	8	11	57
Tucson	153	169	182	161	665
Yuma	24	21	12	20	77
Total	437	471	469	436	1813

Average Caseload for Fiscal Year 2009



Successful Terminations Fiscal Year 2009

	Early Terminations	Expirations	Total
Flagstaff	19	110	129
Phoenix	120	246	366
Sierra Vista	30	22	52
Tucson	118	156	274
Yuma	15	36	51
Total	302	570	872

Revocation by Type Fiscal Year 2009

	New Crime	Technical	Total
Flagstaff	11	70	81
Phoenix	55	242	297
Sierra Vista	4	16	20
Tucson	71	166	237
Yuma	0	9	9
Total	141	503	644

APPENDIX A - Nature of Suit Codes Used in Civil Litigation Categories

SOCIAL SECURITY

861 HIA (42 USC § 1395ff(b))
862 Black Lung (30 USC § 923)
863 DIWC (42 USC § 405(g))
864 SSID Title XVI
865 RSI (42 USC § 405(g))

PERSONAL

INJURY/PROPERTY

LIABILITY

315 Airplane product liability
345 Marine - product liability
355 Motor vehicle - product liability
365 Personal injury - product liability
368 Asbestos personal injury – product liability

PRISONER PETITIONS

463 Habeas Corpus – Alien Detainee
510 Vacate Sentence (28 USC § 2255)
530 Habeas Corpus
535 Habeas Corpus – Death Penalty
540 Mandamus and other
550 Prisoner - Civil Rights
555 Prisoner – Prison Condition

FORFEITURE AND PENALTY

610 Agriculture Acts
620 Food and Drug Acts
630 Liquor Laws
640 Railroad and trucks
650 airline regulations
660 Occupational safety/health
690 Other forfeiture and penalty suits
870 Tax Suits
871 IRS - Third Party Suits (26 USC § 7609))

REAL PROPERTY

210 Land Condemnation
220 Foreclosure
230 Rent, lease, ejectment
240 Torts to land
245 Tort - product liability
290 Other real property actions

COPYRIGHT, PATENT AND TRADEMARK

820 Copyright
830 Patent
840 Trademark

LABOR LAWS

710 Fair Labor Standards Act
720 Labor/Management Relations Act
730 Labor/Management Reporting and Disclosure Act
740 Railway Labor Act
790 Other labor litigation
791 Employee retirement Income Security Act Of 1974

CONTRACT

110 Insurance
120 Marine
130 Miller Act
140 Negotiable instruments
150 Recovery of overpayments and enforcement of judgment
151 Recovery of overpayments under the Medicare Act
152 Recovery of defaulted student loans
153 Recovery of overpayment of veterans benefits
160 Stockholders suits
190 Other contract actions
195 Contract product liability

TORTS - PERSONAL

PROPERTY DAMAGE

310 Airplane
320 Assault, libel and slander
330 Federal Employers' liability
340 Marine
350 Motor vehicle
360 Other personal injury
362 Personal injury - medical malpractice
370 Other Fraud
371 Truth in Lending
380 Other personal property damage
385 Property damage - product liability

CIVIL RIGHTS

440 Other Civil Rights
441 Voting
442 Jobs
443 Accommodations
444 Welfare
445 Amer. W/Disabilities - Employment
446 Amer. w/Disabilities - Other

ANTITRUST

410 Antitrust

OTHER STATUTES

400 State re-apportionment
422 Bankruptcy Appeals Rule 801
423 Withdrawal
430 Banks and Banking
450 Interstate Commerce
460 Deportation
462 Naturalization, Pet For Hearing of Denial
465 Other Immigration Actions
470 Racketeer Influenced and Corrupt Organization (Eff. 11/15/85)
480 Consumer Credit
490 Cable Satellite/TV
810 Selective Service
850 Securities, Commodities, Exchange
875 Customer Challenge (12 USC § 3410)
890 Other Statutory Actions
891 Agricultural Acts
892 Economic Stabilization Act
893 Environmental Matters
894 Energy Allocation Act
895 Freedom of Information Act of 1974
900 Appeal of Fee Determination Under Equal Access to Justice Act
950 Constitutionality of state statutes
990 Other

APPENDIX B – Offense Types Used in Criminal Categories

MARIJUANA

Sell, distribute, or dispense 6501
Import/export 6502
Manufacture 6503
Possession 6504

ALL OTHER DRUGS

Sell, distribute, or dispense 6701, 6801
Import/export 6702, 6802
Manufacture 6703, 6803
Possession 6704, 6804
Other drug offenses 6500, 6505, 6600, 6700, 6705, 6706, 6707, 6800, 6805, 6806, 6807, 6808, 6809, 6810, 6900, 6905, 6907, 6909, 6911

IMMIGRATION

Alien smuggling 8730
Improper entry by alien 8710
Improper reentry by alien 8720
Fraud and misuse of visa/permits 8731
Other immigration offenses 8740, 8750

FIREARMS AND EXPLOSIVES

Possession by prohibited persons 7800, 7820
Furtherance of violent/drug trafficking crimes 7831
Other firearm offenses 7830
Explosives 9994

FRAUD

Tax 4510, 4520, 4530, 4540, 4931, 4932, 4933, 8901
Financial institutions 4600, 4601
Securities and exchange 4910, 4920
Mail 8500
Wire, radio or television 8600
Bankruptcy 4900
Social security 4950
False impersonation 4960
Citizenship and naturalization 4970
Passport 4980
Identification documents & information 8201
False claims and services, government 8200
False statements 4991
Conspiracy to defraud the United States 4992, 4993
Unauthorized access devices 4995
Computer 4996
Health care 4998
Attempt and conspiracy to defraud 4700
Other fraud offenses 4800, 4940, 4941, 4994, 4997, 4999, 7331, 9915, 9916

VIOLENT OFFENSES

Homicide 0100, 0101, 0200, 0201, 0300, 0301, 0310, 0311
Robbery bank 1100
Other robbery offenses 1200, 1400
Assault 1500, 1501, 1560, 1600, 1601, 1602
Kidnapping 7600, 7601, 7610, 7611
Racketeering-violent crime 1700, 7410, 7478
Carjacking 1800
Terrorism 9957
Other violent offenses 6120, 6121

SEX OFFENSES

Sexual abuse of adults 6100
Sexual abuse of minors 6110
Sexually explicit material 5900
Transportation for illegal sexual activity 6301
Sex offender registry 6400
Other sex offenses 6200, 6300

FORGERY AND COUNTERFEITING

Forgery and counterfeiting 5500, 5600, 5710, 5720, 5800

LARCENY AND THEFT

Bank 3100
Postal 3200
Interstate shipments 3300
Theft, U.S. property 3400
Theft, maritime jurisdiction 3500
Transportation, etc., stolen property 3600
Other larceny and theft offenses 3700, 3800

JUSTICE SYSTEM OFFENSES

Aiding, abetting, accessory, etc 7320
Obstruction of justice 9992
Escape from custody 7310, 7313
Failure to appear 7311, 7312
Perjury 7700
Contempt 9921, 9922

REGULATORY OFFENSES

Civil rights 9901, 9902, 9954
Copyright 9912
Food and drug 9400
Hazardous waste-treatment, disposal, storage 9001
Telegraph, telephone, and radiograph 9910, 9911, 9947
National defense 9710, 9720, 9730, 9740, 9741, 9751, 9752, 9753, 9754, 9755, 9770, 9780, 9790, 9791, 9793, 9905, 9950
Antitrust 9200
Labor 9300, 9929, 9952
Game & conservation 9130, 9920
National parks/recreation 9150, 9990

ALL OTHER CRIMINAL FELONY CASES

Burglary 2100, 2200, 2300, 2400
Bank embezzlement 4100
Postal service embezzlement 4200
Financial institutions embezzlement 4320, 4330
Other embezzlement offenses 4310, 4340, 4350, 4390
Auto theft 5100, 5200
Bribery 7100
Money laundering 7477
RICO 7480
Racketeering general 7471, 7473
Extortion, and threats 7400, 7401, 7420, 7430, 7440, 7450, 7460, 7470, 7472, 7474, 7475, 7481, 7482, 7490
Gambling and lottery 7500, 7520, 7530
Failure to pay child support 8100
Other general offenses 7130, 7131, 7314, 7330, 7910, 7920, 7930, 7950, 7961, 7962, 7990, 7991, 9115, 9760, 9792, 9810, 9820, 9940, 9941, 9942
Other property offenses 7940, 7941, 9923, 9944, 9991, 9996